

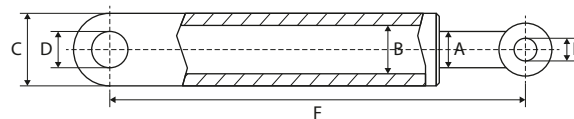


12

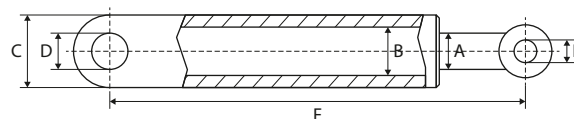
USED FOR  
SÖRENSEN

## LIFT CYLINDERS

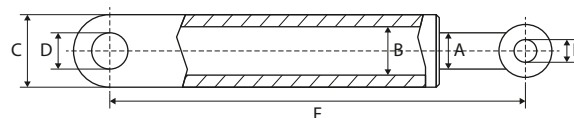
VÉRINS DE LEVAGE – HUBZYLINDER



REF	A	B	C	D	E	F	Info
<a href="#"><u>111TP3876</u></a>	60 mm		80 mm	30 mm	30 mm	460 mm	SX1-750/751



REF	A	B	C	D	E	F	Info
<a href="#"><u>111TP3877</u></a>	70 mm		90 mm	35 mm	30 mm	522 mm	



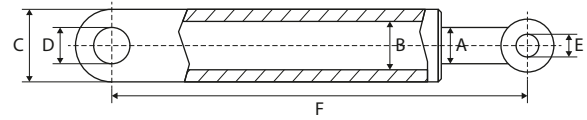
REF	A	B	C	D	E	F	Info
<a href="#"><u>111TP3878</u></a>	63 mm		80 mm	35 mm	35 mm	518 mm	X1-1000

# USED FOR SÖRENSEN

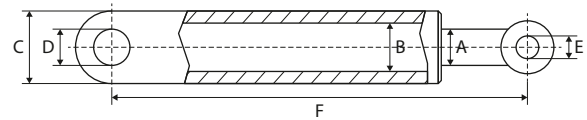
WWW.CROVORG.PL

## TILT CYLINDERS

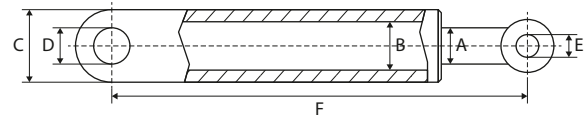
VÉRIN D'INCLINAISON – SCHLIESSZYLINDER



REF	A	B	C	D	E	F	Info
<a href="#">111TP3879</a>	45 mm	80 mm	90 mm	35 mm	35 mm	640 mm	SX1-1001



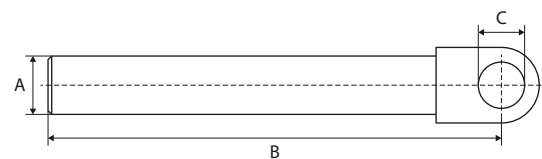
REF	A	B	C	D	E	F	Info
<a href="#">111TP3880</a>	45 mm	70 mm	80 mm	35 mm	35 mm	640 mm	X1-1000



REF	A	B	C	D	E	F	Info
<a href="#">111TP3881</a>	45 mm	80 mm	90 mm	35 mm	35 mm	640 mm	X1-1500

## PISTON RODS

TIGES DE PISTON – KOLBENSTANGEN



REF	A	B	C	Info
<a href="#">111TP3882</a>	63 mm	418 mm	30 mm	X1-1000 – used for cylinder REF <a href="#">111TP3878</a>
<a href="#">111TP3883</a>	70 mm	440 mm	30 mm	Used for cylinder REF <a href="#">111TP3877</a>

SEAL KITS

KITS DE JOINTS – DICHTUNGSSÄTZE



REF	Info
<a href="#">111TP3884</a>	Ø 40/70 mm



REF	Info
<a href="#">111TP3885</a>	Ø 40/70 mm



REF	Info
<a href="#">111TP3886</a>	Ø 45/70 mm



REF	Info
<a href="#">111TP3887</a>	Ø 45/80 mm



REF	Info
<a href="#">111TP3888</a>	Ø 50/60 mm



REF	Info
<a href="#">111TP3889</a>	Ø 60/70 mm



REF	Info
<a href="#">111TP3890</a>	Ø 63/73 mm



REF	Info
<a href="#">111TP3891</a>	Ø 63/75 mm

SEAL KITS

KITS DE JOINTS – DICHTUNGSSÄTZE



REF	Info
<a href="#">111TP3892</a>	Ø 70/80 mm



REF	Info
<a href="#">111TP3893</a>	Ø 70/80 mm



REF	Info
<a href="#">111TP3894</a>	Ø 80/45 mm

O-RINGS

JOINTS TORIQUES – O-RINGE



REF	Info
<a href="#">111TP3895</a>	Ø 40,65 x 5,33 mm
<a href="#">111TP3896</a>	Ø 47 x 5,33 mm

CU-SEALS

JOINTS CU – CU-DICHTUNGEN



REF	Info
<a href="#">111TP3898</a>	Ø M14 – 14,7 x 22 x 1,5 mm
<a href="#">111TP3899</a>	Ø M16 – 16,7 x 24 x 1,5 mm
<a href="#">111TP3900</a>	Ø M18 – 18,7 x 26 x 1,5 mm

## COVERS

COUVERCLES – ABDECKUNGEN



REF	Info
<a href="#"><u>111TP3901</u></a>	290 x 255 x 265 mm – 3 kW



REF	Info
<a href="#"><u>111TP3902</u></a>	315 x 260 x 140 mm



REF	Info
<a href="#"><u>111TP3903</u></a>	210 x 155 x 170 mm – X1-1000

## TANKS &amp; OIL RESERVOIRS

RÉSERVOIRS (D'HUILE) – TANKS &amp; ÖLBEHÄLTER



REF	Info
<a href="#"><u>111TP3904</u></a>	245 x 150 x 147 mm



REF	Info
<a href="#"><u>111TP3897</u></a>	Ø 247 x 2 mm



REF	Info
<a href="#"><u>111TP3905</u></a>	200 x 165 x 175 mm – Ø 188 mm – X1A

DRAIN PLUGS

BOUCHONS DE VIDANGE – ABLASSSCHRAUBEN



REF	Info
<a href="#">111TP3906</a>	3/8"

## ELECTRIC MOTORS

MOTEURS ÉLECTRIQUES – ELEKTROMOTOREN



REF	Volt	kW	Rotation
<a href="#"><u>111TP3907</u></a>	12 V	0,8 kW	<< CCW
<a href="#"><u>111TP3908</u></a>	24 V	1,2 kW	<< CCW

REF	Volt	kW	Rotation
<a href="#"><u>111TP3909</u></a>	12 V	2 kW	<< CCW
<a href="#"><u>111TP3910</u></a>	24 V	2 kW	<< CCW



REF	Volt	kW	Rotation
<a href="#"><u>111TP3911</u></a>	24 V	2 kW	<< CCW

## HYDRAULIC PUMPS

POMPES HYDRAULIQUES – HYDRAULIKPUMPEN

REF	CC	Rotation	Info
<a href="#"><u>111TP3912</u></a>	0,8 cc	CW >>	HE1000-TYP
<a href="#"><u>111TP3913</u></a>	1 cc	CW >>	HE1000-TYP
<a href="#"><u>111TP3914</u></a>	1,2 cc	CW >>	HE1000-TYP
<a href="#"><u>111TP3915</u></a>	1,7 cc	CW >>	HE1000-TYP





## SOLENOID SWITCHES/CONTACTORS

SOLÉNOÏDES/CONTACTEURS – MAGNETSCHALTER/SCHÜTZE



REF	Volt	Amp	Info
<a href="#"><u>111TP3916</u></a>	12 V	100 A	
<a href="#"><u>111TP3917</u></a>	24 V	100 A	



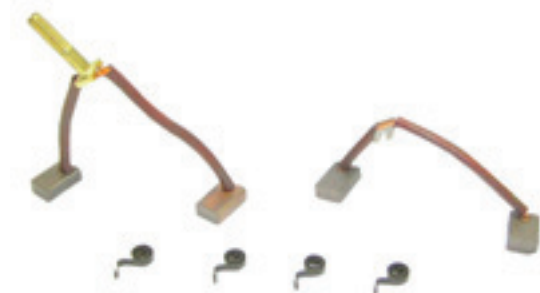
REF	Volt	Amp	Info
<a href="#"><u>111TP3918</u></a>	24 V	150 A	



REF	Volt	Amp	Info
<a href="#"><u>111TP3919</u></a>	12 V	100 A	
<a href="#"><u>111TP3920</u></a>	24 V	100 A	

## BRUSHES

BALAIS – KOHLEBÜRSTEN



REF	Info
<a href="#"><u>111TP5051</u></a>	12,8 x 7,3 x 19,2 mm – 12 V
<a href="#"><u>111TP3921</u></a>	12,8 x 7,3 x 19,2 mm – 24 V

## GUMMY ELEMENT

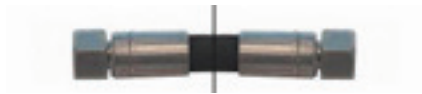
ÉLÉMENT CAOUTCHOUC – GUMMIELEMENTE



REF	Info
<a href="#"><u>111TP3922</u></a>	Ø 80/94 x 40 mm

## HOSES

TUYAUX – SCHLÄUCHE



REF	Hose Ø	Hose Ø	Length	Fitting 1	Fitting 2	Info
<a href="#"><u>111TP3923</u></a>	3/8"	9,5 mm	750 mm	M18 x 1,5 mm	M18 x 1,5 mm	-40–100 °C
<a href="#"><u>111TP3924</u></a>	3/8"	9,5 mm	800 mm	M18 x 1,5 mm	M18 x 1,5 mm	-40–100 °C
<a href="#"><u>111TP3925</u></a>	3/8"	9,5 mm	900 mm	M18 x 1,5 mm	M18 x 1,5 mm	-40–100 °C
<a href="#"><u>111TP3926</u></a>	3/8"	9,5 mm	2000 mm	M18 x 1,5 mm	M18 x 1,5 mm	-40–100 °C



REF	Hose Ø	Hose Ø	Length	Fitting 1	Fitting 2	Info
<a href="#"><u>111TP3927</u></a>	3/8"	9,5	2000 mm	M18 x 1,5 mm	M18 x 1,5 mm	-40–100 °C

# USED FOR SÖRENSEN

WWW.CROVORG.PL

## SOLENOID VALVES

ÉLECTROVANNES – MAGNETVENTILE

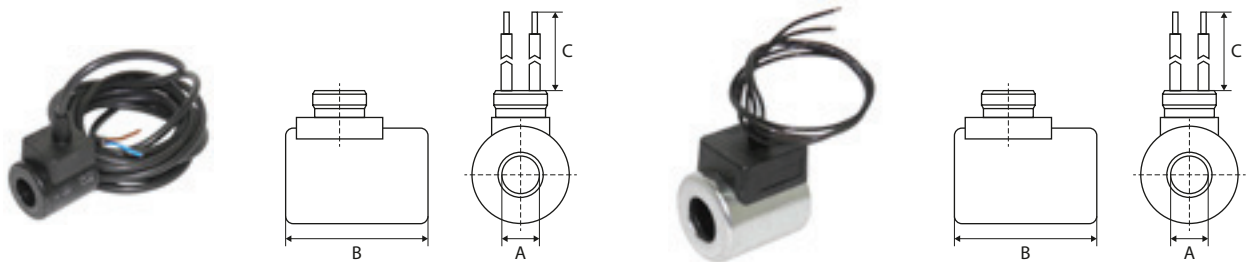


REF	Volt	Ø	Info
<a href="#">111TP3928</a>	12 V	13,8 x 15,3 x 16,8 mm	M20 x 1,5 mm
<a href="#">111TP3929</a>	24 V	13,8 x 15,3 x 16,8 mm	M20 x 1,5 mm

REF	Volt	Ø	Info
<a href="#">111TP3930</a>	12 V	15 mm	M20 x 1,5 mm
<a href="#">111TP3931</a>	24 V	15 mm	M20 x 1,5 mm

## COILS

BOBINES – SPULEN



REF	Volt	A	B	C
<a href="#">111TP3932</a>	12 V	18 mm	40 mm	3000 mm
<a href="#">111TP3933</a>	24 V	18 mm	40 mm	3000 mm

REF	Volt	A	B	C
<a href="#">111TP3934</a>	12 V	18 mm	40 mm	420 mm
<a href="#">111TP3935</a>	24 V	18 mm	40 mm	420 mm

## VALVES & SWITCHES

SOUPAPES & INTERRUPTEURS – VENTILE & SCHALTER



REF	Info
<a href="#">111TP3936</a>	X1A – SX1

COILS & VALVES – BOBINES & SOUPAPES – SPULEN & VENTILE

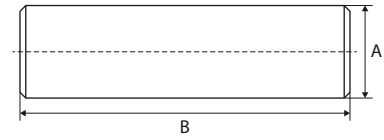
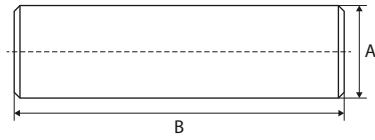
# USED FOR SÖRENSEN

WWW.CROVORG.PL

PINS, BUSHINGS & ROLLERSPINS, BUSHINGS & ROLLERS - AXES, BAGUES & GALETS - ACHSEN, BUCHSEN & RÖLLEN

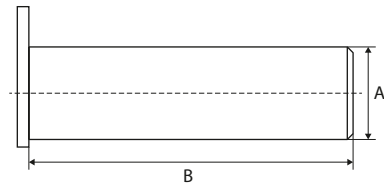
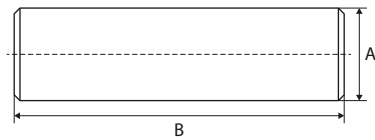
## PINS

AXES - ACHSEN



REF	A	B	Info
<a href="#"><u>111TP3937</u></a>	30 mm	100 mm	
<a href="#"><u>111TP3938</u></a>	35 mm	117 mm	

REF	A	B	Info
<a href="#"><u>111TP3939</u></a>	30 mm	125 mm	

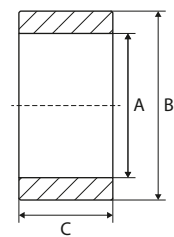
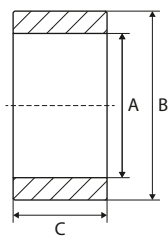


REF	A	B	Info
<a href="#"><u>111TP3940</u></a>	35 mm	135 mm	

REF	A	B	Info
<a href="#"><u>111TP3941</u></a>	30 mm	165 mm	
<a href="#"><u>111TP3942</u></a>	35 mm	125 mm	
<a href="#"><u>111TP3943</u></a>	35 mm	130 mm	
<a href="#"><u>111TP3944</u></a>	35 mm	185 mm	

## PLATFORM ROLLERS

GALETS DE TRANSPALETTE - PLATTFORMROLLEN

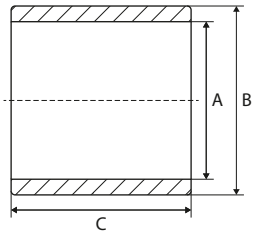
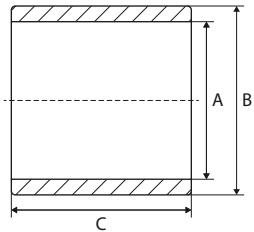


REF	A	B	C
<a href="#"><u>111TP3945</u></a>	30 mm	80 mm	50 mm
<a href="#"><u>111TP3946</u></a>	35 mm	80 mm	46 mm

REF	A	B	C
<a href="#"><u>111TP3947</u></a>	20,5 mm	78 mm	28 mm

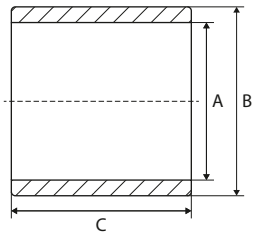
BUSHINGS

BAGUES – BUCHSEN



REF	A	B	C	Info
<a href="#"><u>111TP3948</u></a>	30 mm	35 mm	40 mm	
<a href="#"><u>111TP3949</u></a>	30 mm	35 mm	50 mm	
<a href="#"><u>111TP3950</u></a>	30 mm	35 mm	65 mm	
<a href="#"><u>111TP3951</u></a>	35 mm	40 mm	40 mm	
<a href="#"><u>111TP3952</u></a>	35 mm	40 mm	50 mm	
<a href="#"><u>111TP3953</u></a>	35 mm	40 mm	65 mm	

REF	A	B	C	Info
<a href="#"><u>111TP3954</u></a>	40 mm	45 mm	80 mm	



REF	A	B	C	Info
<a href="#"><u>111TP3955</u></a>	16 mm	20 mm	32 mm	

## SCREWS, NUTS & RINGS

VIS, ÉCROUS & RONDELLES – SCHRAUBEN, MUTTERN & RINGE



REF	Info
<a href="#"><u>111TP1345</u></a>	M8 x 12 mm
<a href="#"><u>111TP1264</u></a>	M8 x 16 mm
<a href="#"><u>111TP1265</u></a>	M10 x 18 mm



REF	Info
<a href="#"><u>111TP1266</u></a>	M12 x 50 mm
<a href="#"><u>111TP1267</u></a>	M16 x 30 mm
<a href="#"><u>111TP1268</u></a>	M16 x 40 mm
<a href="#"><u>111TP1269</u></a>	M16 x 80 mm



REF	Info
<a href="#"><u>111TP1270</u></a>	M8 x 75 mm
<a href="#"><u>111TP1271</u></a>	M10 x 75 mm
<a href="#"><u>111TP1344</u></a>	M14 x 150 mm
<a href="#"><u>111TP1272</u></a>	M14 x 180 mm
<a href="#"><u>111TP1273</u></a>	M14 x 230 mm
<a href="#"><u>111TP1274</u></a>	M16 x 75 mm
<a href="#"><u>111TP1275</u></a>	M16 x 150 mm
<a href="#"><u>111TP1276</u></a>	M16 x 155 mm



REF	Info
<a href="#"><u>111TP1277</u></a>	M6 x 80 mm
<a href="#"><u>111TP1278</u></a>	M8 x 30 mm
<a href="#"><u>111TP1279</u></a>	M8 x 60 mm
<a href="#"><u>111TP1280</u></a>	M16 x 45 mm
<a href="#"><u>111TP1281</u></a>	M20 x 50 mm



REF	Info
<a href="#"><u>111TP1282</u></a>	M8 x 12 mm
<a href="#"><u>111TP1283</u></a>	M10 x 20 mm



REF	Info
<a href="#"><u>111TP1284</u></a>	M6 x 12 mm
<a href="#"><u>111TP1285</u></a>	M6 x 16 mm
<a href="#"><u>111TP1286</u></a>	M12 x 30 mm

# USED FOR SÖRENSEN

WWW.CROVORG.PL

## SCREWS, NUTS & RINGS

VIS, ÉCROUS & RONDELLES – SCHRAUBEN, MUTTERN & RINGE



REF	Info
<a href="#"><u>111TP1287</u></a>	M8 x 20 mm
<a href="#"><u>111TP1288</u></a>	M8 x 25 mm
<a href="#"><u>111TP1289</u></a>	M8 x 30 mm
<a href="#"><u>111TP1290</u></a>	M12 x 25 mm
<a href="#"><u>111TP1291</u></a>	M12 x 45 mm

REF	Info
<a href="#"><u>111TP1306</u></a>	M6 x 45 mm
<a href="#"><u>111TP1342</u></a>	M8 x 80 mm
<a href="#"><u>111TP1307</u></a>	M8 x 90 mm
<a href="#"><u>111TP1308</u></a>	M10 x 80 mm



REF	Info
<a href="#"><u>111TP1292</u></a>	M3
<a href="#"><u>111TP1293</u></a>	M5
<a href="#"><u>111TP1294</u></a>	M6
<a href="#"><u>111TP1295</u></a>	M8
<a href="#"><u>111TP1296</u></a>	M10
<a href="#"><u>111TP1297</u></a>	M12
<a href="#"><u>111TP1298</u></a>	M14
<a href="#"><u>111TP1299</u></a>	M16
<a href="#"><u>111TP1300</u></a>	M20

REF	Info
<a href="#"><u>111TP1309</u></a>	Ø 25 mm
<a href="#"><u>111TP1310</u></a>	Ø 28 mm
<a href="#"><u>111TP1311</u></a>	Ø 30 mm
<a href="#"><u>111TP1312</u></a>	Ø 35 mm
<a href="#"><u>111TP1314</u></a>	Ø 39 mm
<a href="#"><u>111TP1313</u></a>	Ø 40 mm



REF	Info
<a href="#"><u>111TP1301</u></a>	Ø 6 mm
<a href="#"><u>111TP1302</u></a>	Ø 8 mm
<a href="#"><u>111TP1303</u></a>	Ø 24 mm

REF	Info
<a href="#"><u>111TP1315</u></a>	M6
<a href="#"><u>111TP1316</u></a>	M8
<a href="#"><u>111TP1343</u></a>	M16

## USED FOR SÖRENSEN

WWW.CROVORG.PL

## SCREWS, NUTS &amp; RINGS

VIS, ÉCROUS &amp; RONDELLES – SCHRAUBEN, MUTTERN &amp; RINGE



REF	Info
<a href="#"><u>111TP1304</u></a>	Ø 6 x 16 mm
<a href="#"><u>111TP1305</u></a>	Ø 8 x 60 mm

REF	Info
<a href="#"><u>111TP3956</u></a>	Ø 2,9 x 16 mm

## SPRINGS &amp; GAS SPRINGS

RESSORTS &amp; VÉRINS À GAZ – FEDERN &amp; GASDRUCKFEDERN



REF	Info
<a href="#"><u>111TP3957</u></a>	64 x 132 mm – Ø 4 mm

## CAPS

BOUCHONS – DECKEL



REF	Info
<a href="#"><u>111TP3958</u></a>	Ø 114,3 mm

REF	Info
<a href="#"><u>111TP3959</u></a>	Ø 83 mm

## PLATFORM PARTS

PIÈCES DE PLATEFORME – PLATTFORMERSATZTEILE



REF	Info
<a href="#"><u>111TP3960</u></a>	§ 53b Abs. 5 StVZO TÜV/CE with certificate – 250 x 400 mm

REF	Info
<a href="#"><u>111TP1320</u></a>	§ 53b Abs. 5 StVZO TÜV/CE without certificate – 250 x 400 mm



CONTROLLERS  
COMMANDES – BEDIENUNGEN



REF	Info
<a href="#">111TP3961</a>	12–24 V



REF	Info
<a href="#">111TP3962</a>	Used for REF <a href="#">111TP3961</a>

FOOT CONTROLLERS & PARTS

COMMANDES AU PIED & ACCESSOIRES – FUSSSCHALTER & ERSATZTEILE



REF	Info
<a href="#">111TP3964</a>	500 mm – lift



REF	Info
<a href="#">111TP3965</a>	500 mm – lower



REF	Info
<a href="#">111TP3966</a>	315 x 64 mm



REF	Info
<a href="#">111TP3967</a>	



REF	Info
<a href="#">111TP3968</a>	Ø 32 x 15 mm

## ROTARY/PUSH SWITCHES &amp; PARTS

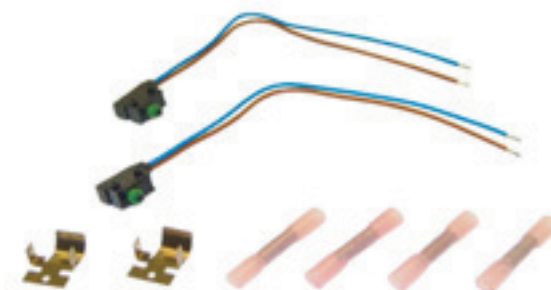
INTERRUPTEURS ROTATIFS/POUSOIRS &amp; ACCESSOIRES – DREH-/DRUCKSCHALTER &amp; ERSATZTEILE



REF	Info
<a href="#"><u>111TP5018</u></a>	24 V – S4/SX1

## LIMIT/MICRO SWITCHES

INTERRUPTEURS DE FIN DE COURSE/MICROINTERRUPTEURS – END-/MIKROSCHALTER



REF	Info
<a href="#"><u>111TP3969</u></a>	

## CONTROL BOXES &amp; PARTS

BOÎTIERS DE CONTRÔLE &amp; ACCESSOIRES – BEDIENKÄSTEN &amp; ERSATZTEILE



REF	Info
<a href="#"><u>111TP3970</u></a>	12–24 V



REF	Info
<a href="#"><u>111TP3971</u></a>	X1A serie 6 – 12 V
<a href="#"><u>111TP3972</u></a>	X1A serie 6 – 24 V

## SENSORS &amp; SWITCHES

CAPTEURS &amp; INTERRUPTEURS – SENSOREN &amp; SCHALTER



REF	Info
<a href="#"><u>111TP3973</u></a>	X1

# USED FOR SÖRENSEN

WWW.CROVORG.PL

## MICROSWITCHES WITH CABLE

MICRORUPTEURS AVEC CÂBLE – MIKROSCHALTER MIT KABEL



REF

Info

**111TP3974**

250 V – 5 A – IP66 – 500 mm



REF

Info

**111TP3975**

300 mm

## VARIOUS CONTROLLER PARTS

DIVERSES PIÈCES DE COMMANDE – WEITERE BEDIENUNG-ERSATZTEILE



REF

Info

**111TP3976**

L: 52 mm – Ø 29 mm

## ATLAS CONTROLLERS

COMMANDES ATLAS – ATLAS BEDIENUNGEN



REF

Info

**111TP3977**

Evolution – 2 buttons  
12–24 V – IP67 – IK09

See also chapter 15 – Accessories for more Atlas controllers.

CIRCUIT BOARDS/CONTROLLERS

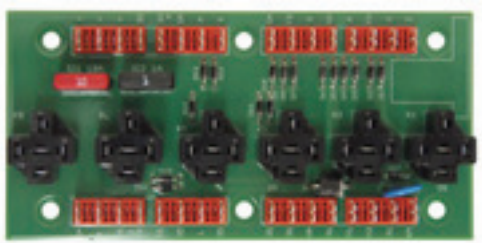
CIRCUITS IMPRIMÉS/COMMANDES – LEITERPLATTEN/BEDIENUNGEN



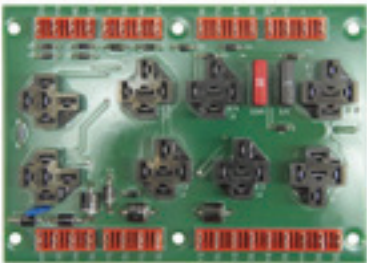
REF	Info
<a href="#">111TP3978</a>	24 V – SX-X1A



REF	Info
<a href="#">111TP3979</a>	4 buttons



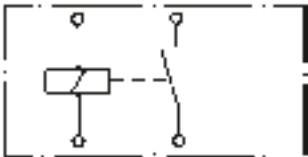
REF	Info
<a href="#">111TP3980</a>	X1 – 750 kg



REF	Info
<a href="#">111TP3981</a>	AST 1508-5008

RELAIS

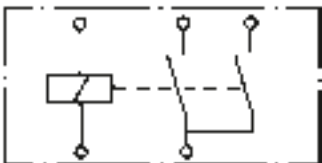
RELAIS – RELAIS



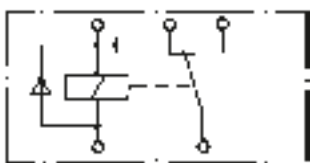
REF	Info
<a href="#">111TP3982</a>	12 V – 20 A – NO/NC
<a href="#">111TP3983</a>	24 V – 20 A – NO/NC



REF	Info
<a href="#">111TP3984</a>	12–24 V – 30 W



REF	Info
<a href="#">111TP3985</a>	24 V – 15 A – 5 pins



REF	Info
<a href="#">111TP3986</a>	24 V – 20 A – 5 pins

DECALS

AUTOCOLLANTS – AUFKLEBER

REF	Info
<a href="#">111TP3987</a>	160 x 75 mm



NOTES – NOTIZ

Handwriting practice area with 30 horizontal dotted lines.