

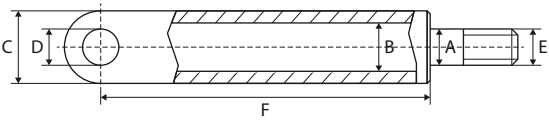


11

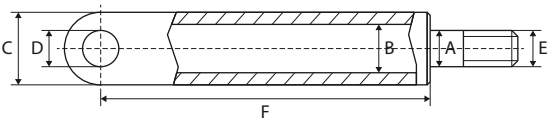
USED FOR RATCLIFF

LIFT CYLINDERS

VÉRINS DE LEVAGE – HUBZYLINDER



REF	A	B	C	D	E	F	Info
<u>111TP5126</u>	28 mm	35 mm	45 mm	20 mm		825 mm	Ø 35 x 600 mm



REF	A	B	C	D	E	F	Info
<u>111TP5127</u>	28 mm	35 mm	45 mm	20 mm		736 mm	Ø 35 x 600 mm

USED FOR RATCLIFF

WWW.CROVORG.PL

ELECTRIC MOTORS

MOTEURS ÉLECTRIQUES – ELEKTROMOTOREN



REF	Volt	kW	Rotation
<u>111TP3846</u>	12 V	1,6 kW	CW >>
<u>111TP3809</u>	24 V	2,2 kW	CW >>

REF	Volt	kW	Rotation
<u>111TP3847</u>	12 V	0,8 kW	CW >>



REF	Volt	kW	Rotation
<u>111TP3848</u>	12 V	1,6 kW	CW >>

REF	Volt	kW	Rotation
<u>111TP3849</u>	24 V	0,5 kW	CW >>



REF	Volt	kW	Rotation
<u>111TP3850</u>	24 V	1,8 kW	CW >>

SOLENOID SWITCHES/CONTACTORS

SOLÉNOÏDES/CONTACTEURS – MAGNETSCHALTER/SCHÜTZE



REF	Volt	Amp	Info
<u>111TP3851</u>	12 V	150 A	
<u>111TP3852</u>	24 V	150 A	

USED FOR RATCLIFF

WWW.CROVORG.PL

BRUSHES
BALAIS – KOHLEBÜRSTEN



REF	Info
<u>111TP3853</u>	15,8 x 8,9 x 15,8 mm – 24 V



REF	Info
<u>111TP3854</u>	12,8 x 8,9 x 25,5 mm

BEARINGS
ROULEMENTS – LAGER

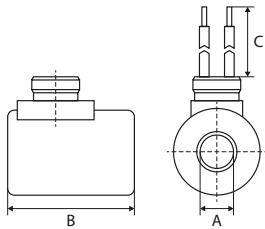


REF	Info
<u>111TP3855</u>	Ø 12/16 x 10 mm

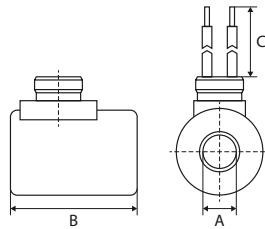


REF	Info
<u>111TP3856</u>	Ø 12/32 x 10 mm
<u>111TP3857</u>	Ø 15/35 x 11 mm

COILS
BOBINES – SPULEN

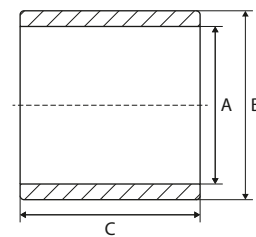


REF	Volt	A	B	C
111TP3858	12 V	16 mm	50 mm	500 mm



REF	Volt	A	B	C
111TP3859	24 V	16 mm	52 mm	380 mm

BAGUES – BUCHSEN



USED FOR RATCLIFF

WWW.CROVORG.PL

SCREWS, NUTS & RINGS

VIS, ÉCROUS & RONDELLES – SCHRAUBEN, MUTTERN & RINGE



REF	Info
<u>111TP1345</u>	M8 x 12 mm
<u>111TP1264</u>	M8 x 16 mm
<u>111TP1265</u>	M10 x 18 mm

REF	Info
<u>111TP1266</u>	M12 x 50 mm
<u>111TP1267</u>	M16 x 30 mm
<u>111TP1268</u>	M16 x 40 mm
<u>111TP1269</u>	M16 x 80 mm



REF	Info
<u>111TP1270</u>	M8 x 75 mm
<u>111TP1271</u>	M10 x 75 mm
<u>111TP1344</u>	M14 x 150 mm
<u>111TP1272</u>	M14 x 180 mm
<u>111TP1273</u>	M14 x 230 mm
<u>111TP1274</u>	M16 x 75 mm
<u>111TP1275</u>	M16 x 150 mm
<u>111TP1276</u>	M16 x 155 mm

REF	Info
<u>111TP1277</u>	M6 x 80 mm
<u>111TP1278</u>	M8 x 30 mm
<u>111TP1279</u>	M8 x 60 mm
<u>111TP1280</u>	M16 x 45 mm
<u>111TP1281</u>	M20 x 50 mm



REF	Info
<u>111TP1282</u>	M8 x 12 mm
<u>111TP1283</u>	M10 x 20 mm

REF	Info
<u>111TP1284</u>	M6 x 12 mm
<u>111TP1285</u>	M6 x 16 mm
<u>111TP1286</u>	M12 x 30 mm

USED FOR RATCLIFF

WWW.CROVORG.PL

MECHANICAL PARTS – PIÈCES MÉCANIQUES – MECHANISCHE ERSTATZTEILE

SCREWS, NUTS & RINGS

VIS, ÉCROUS & RONDELLES – SCHRAUBEN, MUTTERN & RINGE



REF	Info
<u>111TP1287</u>	M8 x 20 mm
<u>111TP1288</u>	M8 x 25 mm
<u>111TP1289</u>	M8 x 30 mm
<u>111TP1290</u>	M12 x 25 mm
<u>111TP1291</u>	M12 x 45 mm



REF	Info
<u>111TP1306</u>	M6 x 45 mm
<u>111TP1342</u>	M8 x 80 mm
<u>111TP1307</u>	M8 x 90 mm
<u>111TP1308</u>	M10 x 80 mm



REF	Info
<u>111TP1292</u>	M3
<u>111TP1293</u>	M5
<u>111TP1294</u>	M6
<u>111TP1295</u>	M8
<u>111TP1296</u>	M10
<u>111TP1297</u>	M12
<u>111TP1298</u>	M14
<u>111TP1299</u>	M16
<u>111TP1300</u>	M20



REF	Info
<u>111TP1309</u>	Ø 25 mm
<u>111TP1310</u>	Ø 28 mm
<u>111TP1311</u>	Ø 30 mm
<u>111TP1312</u>	Ø 35 mm
<u>111TP1314</u>	Ø 39 mm
<u>111TP1313</u>	Ø 40 mm



REF	Info
<u>111TP1301</u>	Ø 6 mm
<u>111TP1302</u>	Ø 8 mm
<u>111TP1303</u>	Ø 24 mm



REF	Info
<u>111TP1315</u>	M6
<u>111TP1316</u>	M8
<u>111TP1343</u>	M16

USED FOR RATCLIFF

WWW.CROVORG.PL

SCREWS, NUTS & RINGS

VIS, ÉCROUS & RONDELLES – SCHRAUBEN, MUTTERN & RINGE



REF	Info
<u>111TP1304</u>	Ø 6 x 16 mm
<u>111TP1305</u>	Ø 8 x 60 mm

SLIDER BLOCKS, ROLLERS & WEAR PLATES

BLOCS DE DÉFILEMENT, GALETS & PLAQUES D'USURE – GLEITBLÖCKE, LAUFROLLEN & VERSCHLEISSPLATTEN



REF	Info
<u>111TP3863</u>	Ø 15/42 mm – 13 mm

MECHANICAL PARTS – PIÈCES MÉCANIQUES – MECHANISCHE ERSTATZTEILE

USED FOR RATCLIFF

WWW.CROVORG.PL

PLATFORM PARTS

PIÈCES DE PLATEFORME – PLATTFORMERSATZTEILE



REF	Info
<u>111TP3864</u>	Ø 30 x 68 mm – 1/2"



REF	Info
<u>111TP3865</u>	Ø 30 x 68 mm – 17/32"



REF	Info
<u>111TP3866</u>	Ø 30 x 68 mm – 7/16"



REF	Info
<u>111TP3867</u>	1/2"



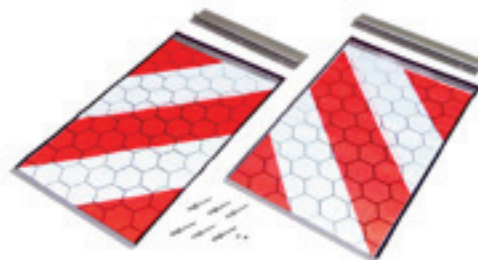
REF	Info
<u>111TP3868</u>	17/32"



REF	Info
<u>111TP3869</u>	7/16"



REF	Info
<u>111TP3870</u>	§ 53b Abs. 5 StVZO TÜV/CE with certificate – 250 x 400 mm



REF	Info
<u>111TP1320</u>	§ 53b Abs. 5 StVZO TÜV/CE without certificate – 250 x 400 mm

CONNECTORS & PARTS
CONNECTEURS & ACCESSOIRES – STECKER & ERSATZTEILE



REF	Info
<u>111TP3871</u>	35 mm – 160 A – SBE160



REF	Info
<u>111TP3872</u>	7 pole – DIN 72577 – ISO 1724



REF	Info
<u>111TP3873</u>	7 pole – DIN 72577 – ISO 1724

RELAIS

RELAIS – RELAIS



REF

Info

[111TP3874](#)

24 V – 150 A

THYRISTORS & DIODES

THYRISTORS & DIODES – THYRISTOREN & DIODEN



REF

Info

[111TP3875](#)

800 V – 6 A