



7

USED FOR  
ERHEL HYDRIS

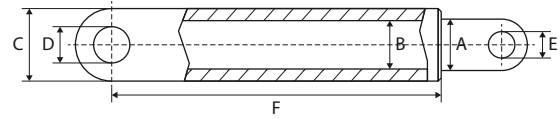
# USED FOR ERHEL HYDRIS

WWW.CROVORG.PL

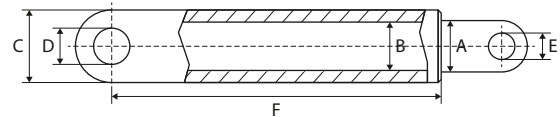
CYLINDERS – VÉRINS/CYLINDRES – ZYLINDER

## LIFT CYLINDERS

VÉRINS DE LEVAGE – HUBZYLINDER



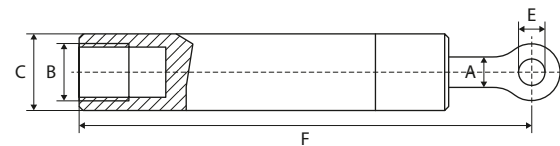
REF	A	B	C	D	E	F	Info
<a href="#"><u>111TP3181</u></a>	60 mm	70 mm	80 mm	25 mm	25 mm	380 mm	Light NI/NE



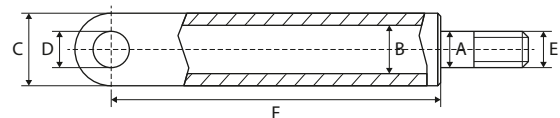
REF	A	B	C	D	E	F	Info
<a href="#"><u>111TP3182</u></a>	35 mm	60 mm	70 mm	30 mm	30 mm	525 mm	

## TILT CYLINDERS

VÉRIN D'INCLINAISON – SCHLISSZYLINDER



REF	A	B	C	D	E	F	Info
<a href="#"><u>111TP3183</u></a>	30 mm	60 mm	70 mm	M30	25 mm	430 mm	Light NI/NE



REF	A	B	C	D	E	F	Info
<a href="#"><u>111TP3184</u></a>	45 mm	80 mm	90 mm	30 mm	M38		

# USED FOR ERHEL HYDRIS

WWW.CROVORG.PL

## SEAL KITS

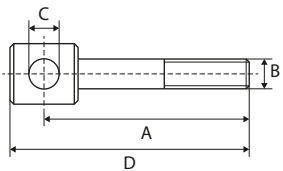
KITS DE JOINTS – DICHTUNGSSÄTZE



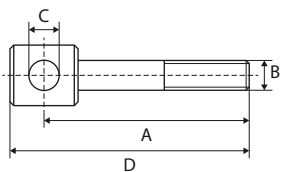
REF	Info	REF	Info
<a href="#"><u>111TP3185</u></a>	Ø 30/40 mm	<a href="#"><u>111TP3186</u></a>	Ø 60/70 mm

## EXTENSIONS

RALLONGES – VERLÄNGERUNG



REF	A	B	C	D	Info
<a href="#"><u>111TP3187</u></a>	295 mm	M30	25 mm	315 mm	



REF	A	B	C	D	Info
<a href="#"><u>111TP3188</u></a>	295 mm	M38	30 mm	320 mm	

CYLINDERS – VÉRINS/CYLINDRES – ZYLINDER

# USED FOR ERHEL HYDRIS

WWW.CROVORG.PL

POWER PACKS & PARTS – GROUPE HYDRAULIQUE & ACCESSOIRES – AGGREGATE & ERSATZTEILE

## FILTERS & BREATHERS

FILTRES & RENIFLARDS – FILTER & ENTLÜFTER



REF

Info

**111TP3189**

1"

## COVERS

COUVERCLES – ABDECKUNGEN



REF

Info

**111TP3190**

290 x 255 x 265 mm

# USED FOR ERHEL HYDRIS

WWW.CROVORG.PL

## ELECTRIC MOTORS

MOTEURS ÉLECTRIQUES – ELEKTROMOTOREN



REF	Volt	kW	Rotation
<a href="#"><u>111TP3191</u></a>	24 V	2 kW	CW >>

REF	Volt	kW	Rotation
<a href="#"><u>111TP3192</u></a>	24 V	2,2 kW	CW >>



REF	Volt	kW	Rotation
<a href="#"><u>111TP3193</u></a>	12 V	0,9 kW	

REF	Volt	kW	Rotation
<a href="#"><u>111TP3198</u></a>	24 V	1,2 kW	



REF	Volt	kW	Rotation
<a href="#"><u>111TP3195</u></a>	12 V	2,1 kW	<< CCW

REF	Volt	kW	Rotation
<a href="#"><u>111TP3194</u></a>	24 V	2,1 kW	<< CCW



REF	Volt	kW	Rotation
<a href="#"><u>111TP3196</u></a>	12 V	1,1 kW	<< CCW

REF	Volt	kW	Rotation
<a href="#"><u>111TP3197</u></a>	24 V	1,2 kW	<< CCW



REF	Volt	kW	Rotation
<a href="#"><u>111TP3199</u></a>	12 V	1,6 kW	CW >>
<a href="#"><u>111TP3200</u></a>	24 V	2,2 kW	CW >>

REF	Volt	kW	Rotation
<a href="#"><u>111TP3201</u></a>	12 V	2 kW	CW >>
<a href="#"><u>111TP3202</u></a>	24 V	3 kW	CW >>

MOTORS, PUMPS & PARTS – MOTEURS, POMPES & ACCESSOIRES – MOTOREN, PUMPEN & ERSATZTEILE

## USED FOR ERHEL HYDRIS

WWW.CROVORG.PL

## HYDRAULIC PUMPS

POMPES HYDRAULIQUES – HYDRAULIKPUMPEN



REF	CC	Rotation	Info
<a href="#"><u>111TP3203</u></a>	1,7 cc	<< CCW	MD-TYP
<a href="#"><u>111TP3204</u></a>	2,5 cc	<< CCW	MD-TYP
<a href="#"><u>111TP3205</u></a>	3,3 cc	<< CCW	MD-TYP

REF	CC	Rotation	Info
<a href="#"><u>111TP3206</u></a>	2 cc	<< CCW	



REF	CC	Rotation	Info
<a href="#"><u>111TP3207</u></a>	2 cc	<< CCW	

## SOLENOID SWITCHES/CONTACTORS

SOLÉNOÏDES/CONTACTEURS – MAGNETSCHALTER/SCHÜTZE



REF	Volt	Amp	Info
<a href="#"><u>111TP3208</u></a>	24 V	150 A	

REF	Volt	Amp	Info
<a href="#"><u>111TP3209</u></a>	12 V	150 A	350 A – 5 sec
<a href="#"><u>111TP3210</u></a>	24 V	150 A	300 A – 5 sec



REF	Volt	Amp	Info
<a href="#"><u>111TP3211</u></a>	12–24 V	80 A	

# USED FOR ERHEL HYDRIS

WWW.CROVORG.PL

## BRUSHES BALAIS – KOHLEBÜRSTEN



REF	Info
<a href="#"><u>111TP3212</u></a>	15,8 x 8,9 x 15,8 mm – 24 V



REF	Info
<a href="#"><u>111TP3213</u></a>	12,8 x 8,9 x 25,9 mm

## BEARINGS ROULEMENTS – LAGER



REF	Info
<a href="#"><u>111TP3214</u></a>	Ø 12/32 x 10 mm



REF	Info
<a href="#"><u>111TP3215</u></a>	Ø 12/32 x 10 mm
<a href="#"><u>111TP3216</u></a>	Ø 15/35 x 11 mm
<a href="#"><u>111TP3217</u></a>	Ø 20/42 x 12 mm

MOTORS, PUMPS & PARTS – MOTEURS, POMPES & ACCESSOIRES – MOTOREN, PUMPEN & ERSATZTEILE

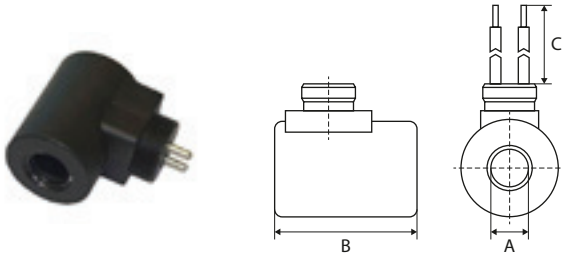
# USED FOR ERHEL HYDRIS

WWW.CROVORG.PL

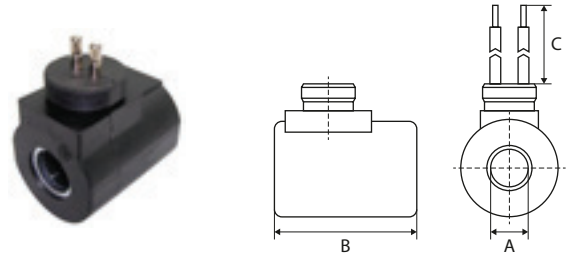
COILS & VALVES – BOBINES & SOUPAPES – SPULEN & VENTILE

## COILS

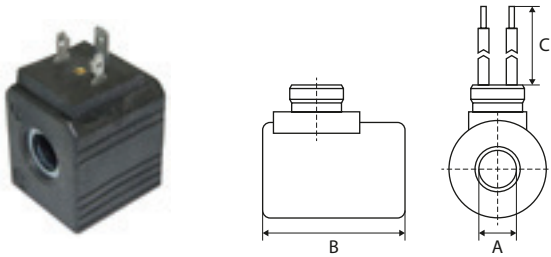
BOBINES – SPULEN



REF	Volt	A	B	Info
<a href="#"><u>111TP3218</u></a>	12 V – 26 W	16 mm	50 mm	M27 x 1 mm



REF	Volt	A	B	C
<a href="#"><u>111TP3219</u></a>	24 V	16 mm	50 mm	M27 x 1 mm



REF	Volt	A	B	Info
<a href="#"><u>111TP1427</u></a>	12 V	13 mm	39 mm	3P



REF	Volt
<a href="#"><u>111TP3221</u></a>	12 V
<a href="#"><u>111TP3222</u></a>	24 V

## SOLENOID VALVES

ÉLECTROVANNES – MAGNETVENTILE

REF	Volt	Ø	Info
<a href="#"><u>111TP3223</u></a>	12 V	12,5 mm	4/2
<a href="#"><u>111TP3224</u></a>	24 V	15,8 mm	4/2





# USED FOR ERHEL HYDRIS

WWW.CROVORG.PL

## VALVE BLOCKS

BOÎTIERS À SOUPAPES – STEUERBLÖCKE



REF	Info
<a href="#"><u>111TP3225</u></a>	24 V



REF	Info
<a href="#"><u>111TP3226</u></a>	24 V – 2/2



REF	Info
<a href="#"><u>111TP3227</u></a>	12 V



REF	Info
<a href="#"><u>111TP3228</u></a>	60 x 47 x 13 mm

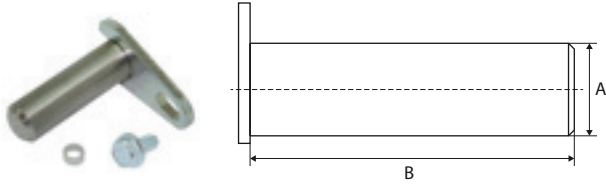
# USED FOR ERHEL HYDRIS

WWW.CROVORG.PL

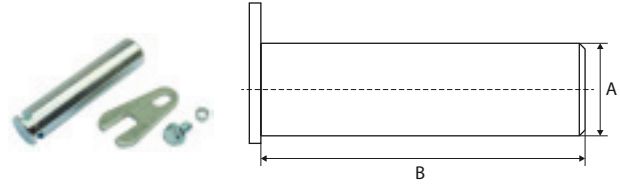
PINS, BUSHINGS & ROLLERSPINS, BUSHINGS & ROLLERS - AXES, BAGUES & GALETS - ACHSEN, BUCHSEN & ROLLEN

## PINS

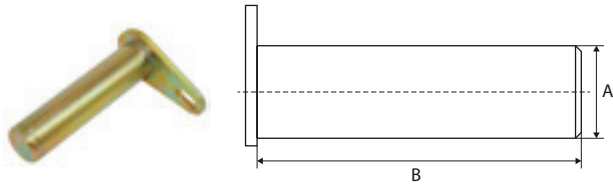
AXES - ACHSEN



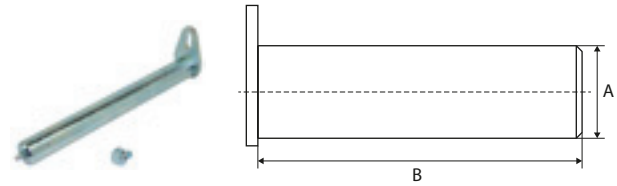
REF	A	B	Info
<a href="#">111TP3229</a>	20 mm	60 mm	



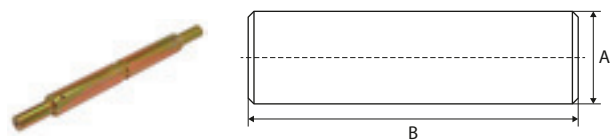
REF	A	B	Info
<a href="#">111TP3230</a>	25 mm	103 mm	
<a href="#">111TP3231</a>	25 mm	110 mm	



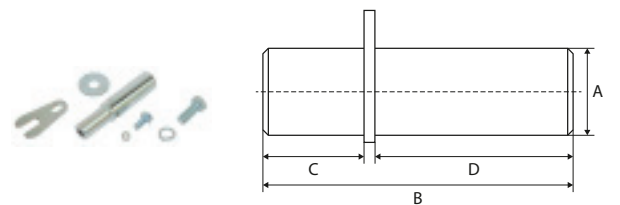
REF	A	B	Info
<a href="#">111TP3232</a>	25 mm	98 mm	



REF	A	B	Info
<a href="#">111TP3234</a>	30 mm	105 mm	M8 x 1 mm
<a href="#">111TP3233</a>	30 mm	255 mm	M8 x 1 mm
<a href="#">111TP3235</a>	35 mm	100 mm	M8 x 1 mm
<a href="#">111TP3236</a>	35 mm	107 mm	M8 x 1 mm
<a href="#">111TP3237</a>	35 mm	124 mm	M8 x 1 mm
<a href="#">111TP3238</a>	35 mm	150 mm	M8 x 1 mm
<a href="#">111TP3239</a>	35 mm	160 mm	M8 x 1 mm



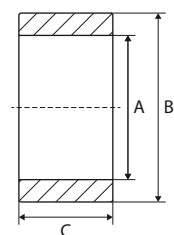
REF	A	B	Info
<a href="#">111TP3240</a>	20/30 mm	335 mm	



REF	A	B	C	D
<a href="#">111TP3241</a>	20/25 mm	116 mm	45 mm	67 mm
<a href="#">111TP3242</a>	20/25 mm	130 mm	45 mm	80 mm

## PLATFORM ROLLERS

GALETS DE TRANSPALETTE - PLATTFORMROLLEN



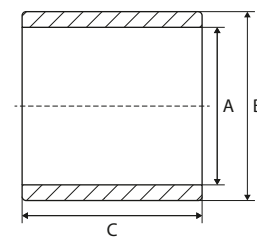
REF	A	B	C
<a href="#">111TP3243</a>	32 mm	75 mm	20 mm

# USED FOR ERHEL HYDRIS

WWW.CROVORG.PL

## BUSHINGS BAGUES – BUCHSEN

REF	A	B	C	Info
<a href="#"><u>111TP3244</u></a>	20 mm	23 mm	20 mm	DX
<a href="#"><u>111TP3245</u></a>	20 mm	23 mm	25 mm	DX
<a href="#"><u>111TP3246</u></a>	25 mm	28 mm	20 mm	DX
<a href="#"><u>111TP3247</u></a>	25 mm	28 mm	30 mm	DX
<a href="#"><u>111TP3248</u></a>	30 mm	34 mm	20 mm	DX
<a href="#"><u>111TP3249</u></a>	30 mm	34 mm	25 mm	DX
<a href="#"><u>111TP3250</u></a>	30 mm	34 mm	30 mm	DX
<a href="#"><u>111TP3251</u></a>	30 mm	34 mm	40 mm	DX
<a href="#"><u>111TP3252</u></a>	35 mm	39 mm	30 mm	DX
<a href="#"><u>111TP3253</u></a>	35 mm	39 mm	50 mm	DX
<a href="#"><u>111TP3254</u></a>	40 mm	44 mm	30 mm	DX



# USED FOR ERHEL HYDRIS

WWW.CROVORG.PL

MECHANICAL PARTS – PIÈCES MÉCANIQUES – MECHANISCHE ERSTATZTEILE

## SCREWS, NUTS & RINGS

VIS, ÉCROUS & RONDELLES – SCHRAUBEN, MUTTERN & RINGE



REF	Info
<a href="#"><u>111TP1345</u></a>	M8 x 12 mm
<a href="#"><u>111TP1264</u></a>	M8 x 16 mm
<a href="#"><u>111TP1265</u></a>	M10 x 18 mm



REF	Info
<a href="#"><u>111TP1266</u></a>	M12 x 50 mm
<a href="#"><u>111TP1267</u></a>	M16 x 30 mm
<a href="#"><u>111TP1268</u></a>	M16 x 40 mm
<a href="#"><u>111TP1269</u></a>	M16 x 80 mm



REF	Info
<a href="#"><u>111TP1270</u></a>	M8 x 75 mm
<a href="#"><u>111TP1271</u></a>	M10 x 75 mm
<a href="#"><u>111TP1344</u></a>	M14 x 150 mm
<a href="#"><u>111TP1272</u></a>	M14 x 180 mm
<a href="#"><u>111TP1273</u></a>	M14 x 230 mm
<a href="#"><u>111TP1274</u></a>	M16 x 75 mm
<a href="#"><u>111TP1275</u></a>	M16 x 150 mm
<a href="#"><u>111TP1276</u></a>	M16 x 155 mm



REF	Info
<a href="#"><u>111TP1277</u></a>	M6 x 80 mm
<a href="#"><u>111TP1278</u></a>	M8 x 30 mm
<a href="#"><u>111TP1279</u></a>	M8 x 60 mm
<a href="#"><u>111TP1280</u></a>	M16 x 45 mm
<a href="#"><u>111TP1281</u></a>	M20 x 50 mm



REF	Info
<a href="#"><u>111TP1282</u></a>	M8 x 12 mm
<a href="#"><u>111TP1283</u></a>	M10 x 20 mm



REF	Info
<a href="#"><u>111TP1284</u></a>	M6 x 12 mm
<a href="#"><u>111TP1285</u></a>	M6 x 16 mm
<a href="#"><u>111TP1286</u></a>	M12 x 30 mm

# USED FOR ERHEL HYDRIS

WWW.CROVORG.PL

## SCREWS, NUTS & RINGS

VIS, ÉCROUS & RONDELLES – SCHRAUBEN, MUTTERN & RINGE



REF	Info
<a href="#"><u>111TP1287</u></a>	M8 x 20 mm
<a href="#"><u>111TP1288</u></a>	M8 x 25 mm
<a href="#"><u>111TP1289</u></a>	M8 x 30 mm
<a href="#"><u>111TP1290</u></a>	M12 x 25 mm
<a href="#"><u>111TP1291</u></a>	M12 x 45 mm

REF	Info
<a href="#"><u>111TP1306</u></a>	M6 x 45 mm
<a href="#"><u>111TP1342</u></a>	M8 x 80 mm
<a href="#"><u>111TP1307</u></a>	M8 x 90 mm
<a href="#"><u>111TP1308</u></a>	M10 x 80 mm



REF	Info
<a href="#"><u>111TP1292</u></a>	M3
<a href="#"><u>111TP1293</u></a>	M5
<a href="#"><u>111TP1294</u></a>	M6
<a href="#"><u>111TP1295</u></a>	M8
<a href="#"><u>111TP1296</u></a>	M10
<a href="#"><u>111TP1297</u></a>	M12
<a href="#"><u>111TP1298</u></a>	M14
<a href="#"><u>111TP1299</u></a>	M16
<a href="#"><u>111TP1300</u></a>	M20

REF	Info
<a href="#"><u>111TP1309</u></a>	Ø 25 mm
<a href="#"><u>111TP1310</u></a>	Ø 28 mm
<a href="#"><u>111TP1311</u></a>	Ø 30 mm
<a href="#"><u>111TP1312</u></a>	Ø 35 mm
<a href="#"><u>111TP1314</u></a>	Ø 39 mm
<a href="#"><u>111TP1313</u></a>	Ø 40 mm



REF	Info
<a href="#"><u>111TP1301</u></a>	Ø 6 mm
<a href="#"><u>111TP1302</u></a>	Ø 8 mm
<a href="#"><u>111TP1303</u></a>	Ø 24 mm

REF	Info
<a href="#"><u>111TP1315</u></a>	M6
<a href="#"><u>111TP1316</u></a>	M8
<a href="#"><u>111TP1343</u></a>	M16

# USED FOR ERHEL HYDRIS

WWW.CROVORG.PL

MECHANICAL PARTS – PIÈCES MÉCANIQUES – MECHANISCHE ERSTATZTEILE

## SCREWS, NUTS & RINGS

VIS, ÉCROUS & RONDELLES – SCHRAUBEN, MUTTERN & RINGE



REF	Info
<a href="#"><u>111TP1304</u></a>	Ø 6 x 16 mm
<a href="#"><u>111TP1305</u></a>	Ø 8 x 60 mm

REF	Info
<a href="#"><u>111TP3255</u></a>	M30

## CAPS

BOUCHONS – DECKEL



REF	Info
<a href="#"><u>111TP3256</u></a>	Ø 100 mm

# USED FOR ERHEL HYDRIS

WWW.CROVORG.PL

## PLATFORM PARTS

PIÈCES DE PLATEFORME – PLATTFORMERSATZTEILE



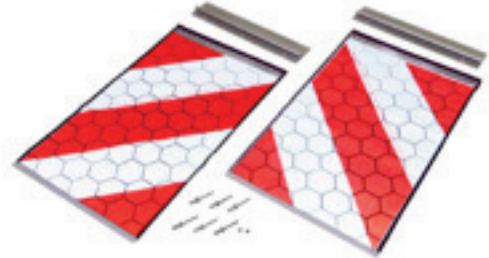
REF	Info
<a href="#"><u>111TP3257</u></a>	3/4" – 1610 mm



REF	Info
<a href="#"><u>111TP3258</u></a>	3/4" – 609,6 mm



REF	Info
<a href="#"><u>111TP1319</u></a>	§ 53b Abs. 5 StVZO TÜV/CE with certificate – 250 x 400 mm



REF	Info
<a href="#"><u>111TP1320</u></a>	§ 53b Abs. 5 StVZO TÜV/CE without certificate – 250 x 400 mm



REF	Info
<a href="#"><u>111TP3260</u></a>	M12 x 75 mm

## USED FOR ERHEL HYDRIS

WWW.CROVORG.PL

## CONTROLLERS

COMMANDES – BEDIENUNGEN



REF

Info

[111TP3261](#)

12–24 V



REF

Info

[111TP3262](#)Used for REF [111TP3261](#)

## JOYSTICKS

LEVIER DE COMMANDE – JOYSTICKS



REF

Info

[111TP3263](#)

Light

## ROTARY/PUSH SWITCHES &amp; PARTS

INTERRUPTEURS ROTATIFS/POUSOIRS &amp; ACCESSOIRES – DREH-/DRUCKSCHALTER &amp; ERSATZTEILE



REF

Info

[111TP3264](#) $\pm 66,5 \times 47,5 \text{ mm}$ 

REF

Info

[111TP3265](#) $\pm 67 \times 48 \text{ mm}$ 

REF

Info

[111TP3266](#) $\varnothing 29,8 \text{ mm} - \pm 53 \times 50 \text{ mm}$



# USED FOR ERHEL HYDRIS

WWW.CROVORG.PL

## BATTERY/EMERGENCY SWITCHES & PARTS

COUPE BATTERIE/INTERRUPTEURS D'ARRÊT D'URGENCE & ACCESSOIRES – BATTERIE-/NOTSTOPPSCHALTER & ERSATZTEILE



REF

Info

[111TP3267](#)

100 A – M10



REF

Info

[111TP3268](#)

Used for REF [111TP3267](#)

## CONTROL BOXES & PARTS

BOÎTIERS DE CONTRÔLE & ACCESSOIRES – BEDIENKÄSTEN & ERSATZTEILE



REF

Info

[111TP3269](#)

## ATLAS CONTROLLERS

COMMANDES ATLAS – ATLAS BEDIENUNGEN



REF

Info

[111TP3270](#)

Extreme universal – 2 buttons – 12–24 V – 500 mA – IP67 – IK09 – programmable



REF

Info

[111TP3271](#)

Extreme universal – 3 buttons – 12–24 V – 500 mA – IP67 – IK09 – programmable

See also chapter 15 – Accessories for more Atlas controllers.

# USED FOR ERHEL HYDRIS

WWW.CROVORG.PL

CABLES & CONNECTORS – CÂBLES & CONNECTEURS – KABEL & STECKER

## KOSTAL CABLES

CÂBLES KOSTAL – KOSTALKABEL



REF	Info
<a href="#"><u>111TP3272</u></a>	4000 mm – M24/M27 x 1 mm

## SPIRAL CABLES

CÂBLES SPIRALÉS – SPIRALKABEL



REF	Info
<a href="#"><u>111TP3273</u></a>	2500 mm – 5 x 0,75 mm – Ø 15/29 mm



REF	Info
<a href="#"><u>111TP3274</u></a>	2500 mm – 7 x 0,75 mm – Ø 15/30mm

## CABLES & PARTS

CÂBLES DE BATTERIE – KABEL & ERSATZTEILE



REF	Info
<a href="#"><u>111TP3275</u></a>	3600 mm

CONNECTORS & PARTS  
CONNECTEURS & ACCESSOIRES – STECKER & ERSATZTEILE



REF	Info
<a href="#">111TP3276</a>	250 A



REF	Info
<a href="#">111TP3277</a>	250 A



REF	Info
<a href="#">111TP3278</a>	7 pole – DIN 72577 – ISO 1724



REF	Info
<a href="#">111TP3279</a>	7 pole – DIN 72577 – ISO 1724



REF	Info
<a href="#">111TP3280</a>	Hirschmann (GSA)

# USED FOR ERHEL HYDRIS

WWW.CROVORG.PL

ELECTRICAL PARTS – PIÈCES ÉLECTRIQUES – ELEKTRISCHE ERSATZTEILE

## FLASHLIGHTS & PARTS

LAMPES TORCHES & ACCESSOIRES – BLINKLEUCHTEN & ERSATZTEILE



REF	Info
<a href="#"><u>111TP3281</u></a>	20° – IP68



REF	Info
<a href="#"><u>111TP3282</u></a>	Used for REF <a href="#"><u>111TP3281</u></a>

## CIRCUIT BOARDS/CONTROLLERS

CIRCUITS IMPRIMÉS/COMMANDES – LEITERPLATTEN/BEDIENUNGEN



REF	Info
<a href="#"><u>111TP3283</u></a>	24 V – SX-X1A

## FUSES

FUSIBLES – SICHERUNGEN



REF	Info
<a href="#"><u>111TP3284</u></a>	100 A – DIN 72581/5
<a href="#"><u>111TP3285</u></a>	200 A – DIN 72581/5
<a href="#"><u>111TP3286</u></a>	300 A – DIN 72581/5



REF	Info
<a href="#"><u>111TP3287</u></a>	100A – DIN 43560/1
<a href="#"><u>111TP3288</u></a>	200A – DIN 43560/1



REF	Info
<a href="#"><u>111TP3289</u></a>	100 A

FUSE HOLDERS & PARTS

PORTE-FUSIBLES & ACCESSOIRES – SICHERUNGSHALTER & ERSATZTEILE



REF	Info	REF	Info
<a href="#"><u>111TP3290</u></a>	20 A max – DIN 72581/med	<a href="#"><u>111TP3291</u></a>	M10 – DIN 43560/1

USED FOR ERHEL HYDRIS

WWW.CROVORG.PL

NOTES – NOTIZ

Handwriting practice area with horizontal dotted lines.