



6

USED FOR
DHOLLANDIA

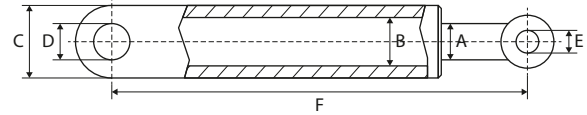
USED FOR DHOLLANDIA

WWW.CROVORG.PL

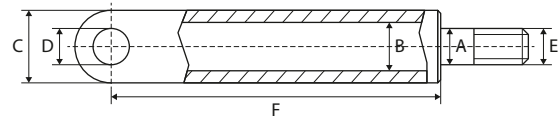
CYLINDERS – VÉRINS/CYLINDRES – ZYLINDER

LIFT CYLINDERS

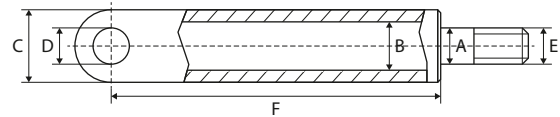
VÉRINS DE LEVAGE – HUBZYLINDER



REF	A	B	C	D	E	F	Info
<u>111TP2207</u>	35 mm	50 mm	58 mm	25 mm	21 mm	405 mm	Left – OK180

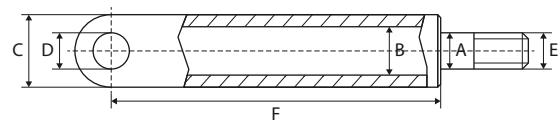


REF	A	B	C	D	E	F	Info
<u>111TP2208</u>	40 mm	70 mm	80 mm	30 mm	M33	485 mm	Left/right – CH14



DH-LM 1500/2000

REF	A	B	C	D	E	F	Info
<u>111TP2211</u>	35 mm	70 mm	80 mm	30 mm	M33	482 mm	Left/right – CH37



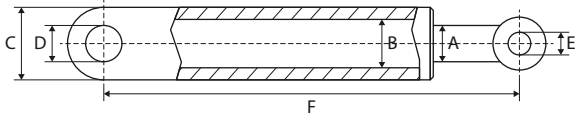
REF	A	B	C	D	E	F	Info
<u>111TP2209</u>	40 mm	60 mm	70 mm	30 mm	M33	470 mm	Left/right – CH37

USED FOR DHOLLANDIA

WWW.CROVORG.PL

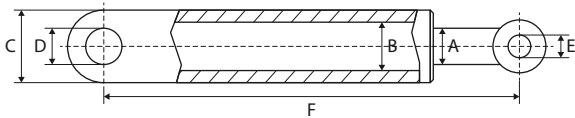
LIFT CYLINDERS

VÉRINS DE LEVAGE – HUBZYLINDER



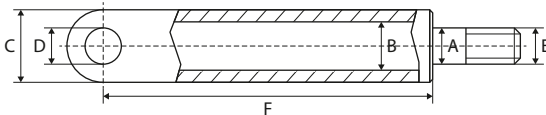
DH-LM 1500/2000

REF	A	B	C	D	E	F	Info
<u>111TP2210</u>	35 mm	60 mm	70 mm	30 mm	25 mm	555 mm	Right – CH37

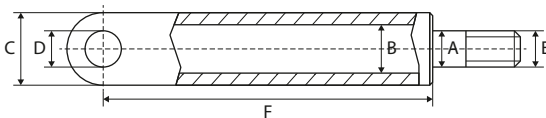


DH-LM 1500/2000

REF	A	B	C	D	E	F	Info
<u>111TP5134</u>	35 mm	60 mm	70 mm	30 mm	25 mm	555 mm	Left – CH37



REF	A	B	C	D	E	F	Info
<u>111TP2213</u>	30 mm	50 mm	60 mm	25 mm	27/30 mm	430 mm	Left



REF	A	B	C	D	E	F	Info
<u>111TP2214</u>	30 mm	50 mm	60 mm	25 mm	27/30 mm	430 mm	Right

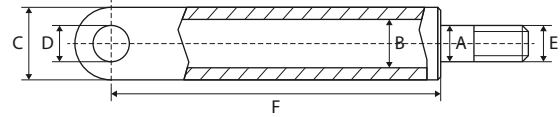
USED FOR DHOLLANDIA

WWW.CROVORG.PL

CYLINDERS – VÉRINS/CYLINDRES – ZYLINDER

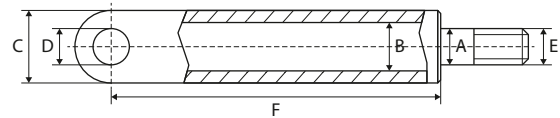
TILT CYLINDERS

VÉRIN D'INCLINAISON – SCHLIESSZYLINDER



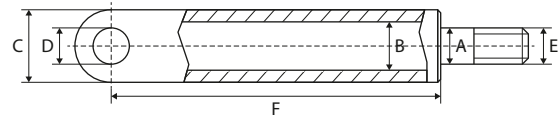
DH-LM 1500/2000

REF	A	B	C	D	E	F	Info
<u>111TP2215</u>	40 mm	80 mm	90 mm	30 mm	M49 x 2 mm	385 mm	SKS236 SC8



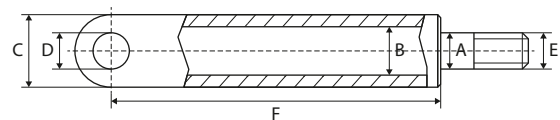
DH-LM 1500/2000

REF	A	B	C	D	E	F	Info
<u>111TP2216</u>	40 mm	80 mm	90 mm	30 mm	M49 x 2 mm	412 mm	SKS266 SC8



DH-LM 1500/2000

REF	A	B	C	D	E	F	Info
<u>111TP2218</u>	35 mm	70 mm	80 mm	30 mm	M30	198 mm	Left/right – SDS/C70



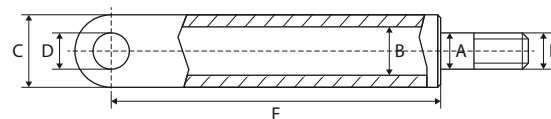
REF	A	B	C	D	E	F	Info
<u>111TP2219</u>	40 mm	70 mm	90 mm	30 mm	Ø 37/40 mm	195 mm	SC10

USED FOR DHOLLANDIA

WWW.CROVORG.PL

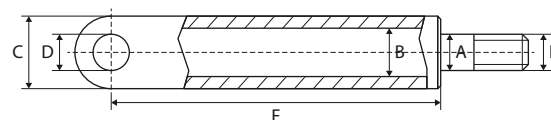
TILT CYLINDERS

VÉRIN D'INCLINAISON – SCHLIESSZYLINDER



DH-LM 1500/2000/2500

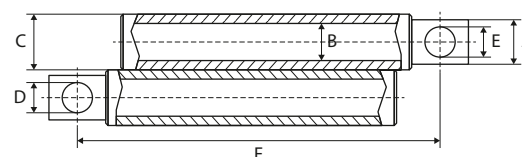
REF	A	B	C	D	E	F	Info
<u>111TP2220</u>	40 mm	70 mm	90 mm	30 mm	Ø 37/40 mm	195 mm	SC10 EDS – M14 x 150 mm



REF	A	B	C	D	E	F	Info
<u>111TP2221</u>	40 mm	70 mm	90 mm	30 mm	Ø 37/40 mm	195 mm	SC10 EDS – M14 x 180 mm

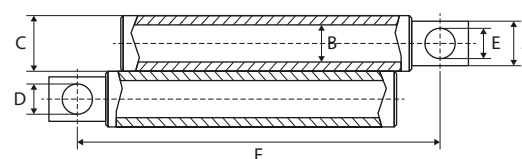
RETRACTION CYLINDERS

VÉRINS DE RÉTRACTION – ZEICHZYLINDER



DH-SM(R) 1500/2000

REF	A	B	C	D	E	F	Info
<u>111TP2222</u>	35 mm	50 mm	60 mm	17 mm	17 mm	729 mm	AC7 – DKC1100



DH-SM(R) 1500/2000

REF	A	B	C	D	E	F	Info
<u>111TP2223</u>	35 mm	50 mm	60 mm	17 mm	17 mm	829 mm	AC7 – DKC1300

USED FOR DHOLLANDIA

WWW.CROVORG.PL

CYLINDERS – VÉRINS/CYLINDRES – ZYLINDER

PRESSURE EXCHANGERS

ÉCHANGEURS DE PRESSION – DRUCKÜBERSETZER



REF	Ø	Info
<u>111TP2224</u>	80/120 mm	GS 120-80



REF	Ø	Info
<u>111TP2225</u>	80/140 mm	GS 140-80



REF	Ø	Info
<u>111TP2226</u>	80/115 mm	GS 100-80

USED FOR DHOLLANDIA

WWW.CROVORG.PL

PISTON RODS

TIGES DE PISTON – KOLBENSTANGEN



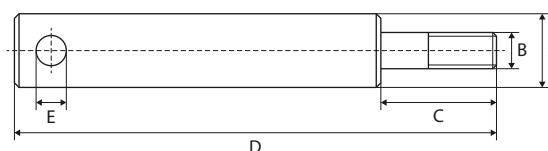
REF	A	B	C	D	E	F	Info
111TP2227	30 mm	M20	M27	32 mm	70 mm	372 mm	SKM



REF	Ø	Info
111TP2228	40 mm	EDS 180
111TP5139	40 mm	EDS 150



REF	Ø	Info
111TP2229	30 mm	OK



REF	A	B	C	D	E	F	Info
111TP2230	30 mm	M20	27 mm	670 mm	17 mm		DKB
111TP2231	35 mm	M20	27 mm	770 mm	17 mm		DKC 1300
111TP2232	35 mm	M20	27 mm	670 mm	17 mm		DKC 1100



REF	A	B	C	D	E	F	Info
111TP2233	35 mm	M20	M20	57 mm	57 mm	660 mm	DKD

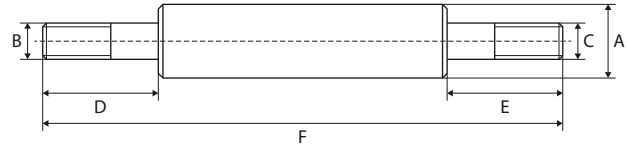
USED FOR DHOLLANDIA

WWW.CROVORG.PL

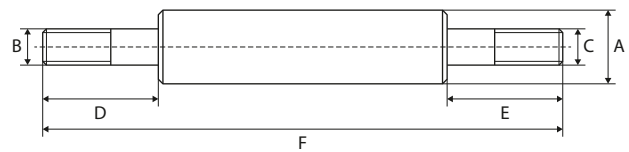
CYLINDER PARTS – PIÈCES DE CYLINDRE – ZYLINDER-ERSATZTEILE

PISTON RODS

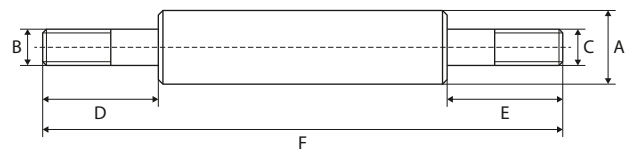
TIGES DE PISTON – KOLBENSTANGEN



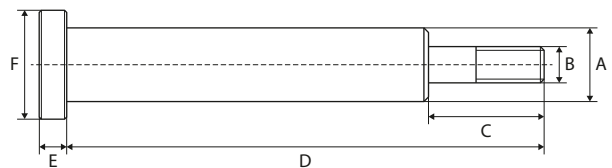
REF	A	B	C	D	E	F	Info
<u>111TP2234</u>	40 mm			24 mm	30 mm	200 mm	SDS



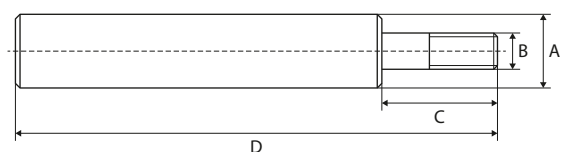
REF	A	B	C	D	E	F	Info
<u>111TP2235</u>	35 mm			16 mm	30 mm	435 mm	OK311



REF	A	B	C	D	E	F	Info
<u>111TP2236</u>	35 mm	M33	M24	72 mm	30 mm	361 mm	



REF	A	B	C	D	E	F	Info
<u>111TP2237</u>	40 mm	M33	46 mm	450 mm	85 mm	65 mm	SKS 236

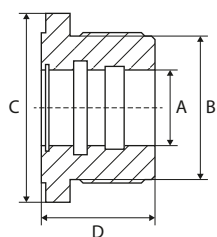
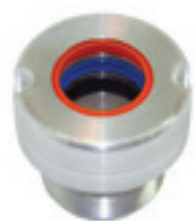


REF	A	B	C	D	E	F	Info
<u>111TP2238</u>	40 mm	M33	30 mm	435 mm			OK 310

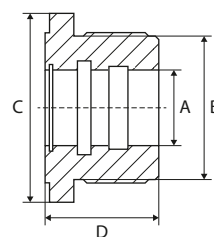
USED FOR DHOLLANDIA

WWW.CROVORG.PL

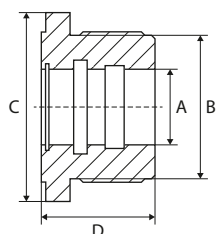
CYLINDER HEADS CULASSES – ZYLINDERKÖPFE



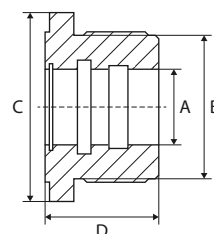
REF	A	B	C	D	Info
<u>111TP2239</u>	30 mm	40 mm	60 mm	56 mm	SA/EW



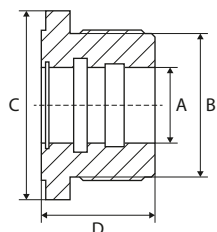
REF	A	B	C	D	Info
<u>111TP2241</u>	30 mm	50 mm	50 mm	47 mm	



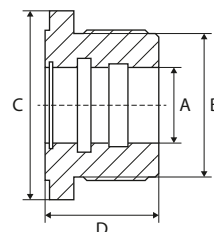
REF	A	B	C	D	Info
<u>111TP2242</u>	30 mm	50 mm	70 mm	50 mm	



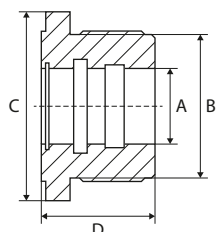
REF	A	B	C	D	Info
<u>111TP2243</u>	35 mm	50 mm	70 mm	50 mm	



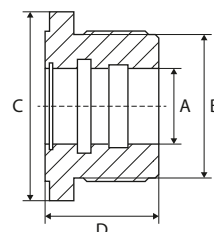
REF	A	B	C	D	Info
<u>111TP2246</u>	35 mm	70 mm	70/90 mm	50 mm	SA/EW



REF	A	B	C	D	Info
<u>111TP2247</u>	40 mm	60 mm	80 mm	50 mm	SA/EW



REF	A	B	C	D	Info
<u>111TP2248</u>	40 mm	70 mm	70/90 mm	65 mm	SA/EW

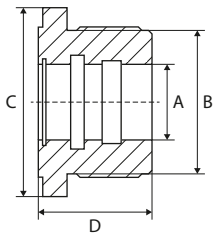


REF	A	B	C	D	Info
<u>111TP2249</u>	40 mm	80 mm	70/100 mm	65 mm	SA/EW

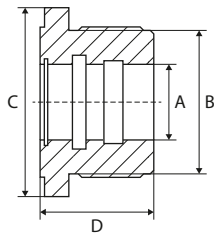
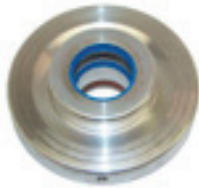
USED FOR DHOLLANDIA

WWW.CROVORG.PL

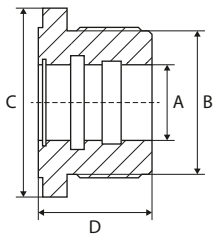
CYLINDER HEADS
CULASSES – ZYLINDERKÖPFE



REF	A	B	C	D	Info
<u>111TP2250</u>	40 mm	90 mm	70/100 mm	65 mm	SA/EW



REF	A	B	C	D	Info
<u>111TP2251</u>	40 mm	100 mm	128 mm	65 mm	SA/EW



REF	A	B	C	D	Info
<u>111TP2252</u>	35 mm	60 mm	190 mm	50 mm	

USED FOR DHOLLANDIA

WWW.CROVORG.PL

PISTONS

PISTONS - KOLBEN



REF	Ø	Info
<u>111TP2253</u>	50 mm	DA/DW - DK/DKD



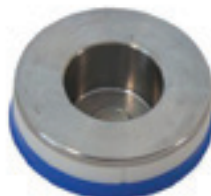
REF	Ø	Info
<u>111TP2254</u>	50 mm	DA/DW - DKC



REF	Ø	Info
<u>111TP2255</u>	40/60 mm	SA/EW



REF	Ø	Info
<u>111TP2256</u>	40/70 mm	SA/EW



REF	Ø	Info
<u>111TP2257</u>	40/80 mm	SA/EW



REF	Ø	Info
<u>111TP2258</u>	80 mm	SKS



REF	Ø	Info
<u>111TP2259</u>	40 mm	DA/DW - KID



REF	Ø	Info
<u>111TP2260</u>	30/50 mm	SA/EW

CYLINDER PARTS - PIÈCES DE CYLINDRE - ZYLINDER-ERSATZTEILE

USED FOR DHOLLANDIA

WWW.CROVORG.PL

CYLINDER PARTS – PIÈCES DE CYLINDRE – ZYLINDER-ERSATZTEILE

PISTONS

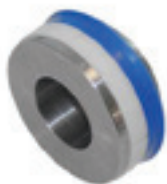
PISTONS – KOLBEN



REF	Ø	Info
<u>111TP2261</u>	35/50 mm	SA/EW



REF	Ø	Info
<u>111TP2262</u>	35/60 mm	SA/EW



REF	Ø	Info
<u>111TP2263</u>	35/70 mm	SA/EW



REF	Ø	Info
<u>111TP2264</u>	50 mm	SA/EW – SKM



REF	Ø	Info
<u>111TP2265</u>	40/90 mm	SA/EW



REF	Ø	Info
<u>111TP2266</u>	50 mm	SA/EW – SKM 2010–...



REF	Ø	Info
<u>111TP2267</u>	40 mm	SA/EW – SKSV – ...–2009

SEAL KITS

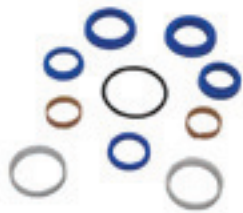
KITS DE JOINTS – DICHTUNGSSÄTZE



REF	Info
<u>111TP2268</u>	Ø 30/38 mm – DH-VA



REF	Info
<u>111TP2269</u>	Ø 30/40 mm



REF	Info
<u>111TP2270</u>	Ø 30/50 mm



REF	Info
<u>111TP2271</u>	Ø 30/50 mm



REF	Info
<u>111TP2272</u>	Ø 30/50 mm



REF	Info
<u>111TP2273</u>	Ø 30/50 mm – DW



REF	Info
<u>111TP2274</u>	Ø 30/60 mm



REF	Info
<u>111TP2275</u>	Ø 35/50 mm



REF	Info
<u>111TP2276</u>	Ø 35/50 mm



REF	Info
<u>111TP2277</u>	Ø 35/60 mm

USED FOR DHOLLANDIA

WWW.CROVORG.PL

CYLINDER PARTS – PIÈCES DE CYLINDRE – ZYLINDER-ERSATZTEILE

SEAL KITS

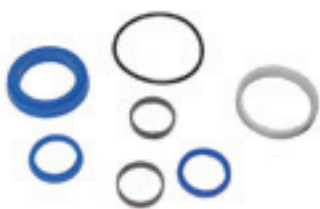
KITS DE JOINTS – DICHTUNGSSÄTZE



REF	Info
<u>111TP2278</u>	Ø 35/60 mm



REF	Info
<u>111TP2279</u>	Ø 35/60 mm



REF	Info
<u>111TP2280</u>	Ø 35/70 mm



REF	Info
<u>111TP2281</u>	Ø 35/70 mm



REF	Info
<u>111TP2282</u>	Ø 35/70 mm



REF	Info
<u>111TP2283</u>	Ø 40/50 mm



REF	Info
<u>111TP2284</u>	Ø 40/60 mm



REF	Info
<u>111TP2285</u>	Ø 40/70 mm



REF	Info
<u>111TP2286</u>	Ø 40/70 mm



REF	Info
<u>111TP2287</u>	Ø 40/80 mm

USED FOR DHOLLANDIA

WWW.CROVORG.PL

SEAL KITS

KITS DE JOINTS – DICHTUNGSSÄTZE



REF	Info
<u>111TP2288</u>	Ø 40/90 mm



REF	Info
<u>111TP2289</u>	Ø 40/100 mm



REF	Info
<u>111TP2290</u>	Ø 55/80 mm



REF	Info
<u>111TP2291</u>	Ø 55/90 mm



REF	Info
<u>111TP2292</u>	Ø 60/40 mm



REF	Info
<u>111TP2293</u>	Ø 80/100 mm – GS



REF	Info
<u>111TP2294</u>	Ø 80/120 mm – GS



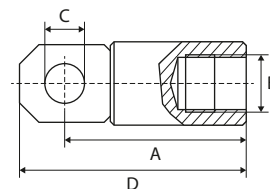
REF	Info
<u>111TP2295</u>	Ø 80/140 mm

USED FOR DHOLLANDIA

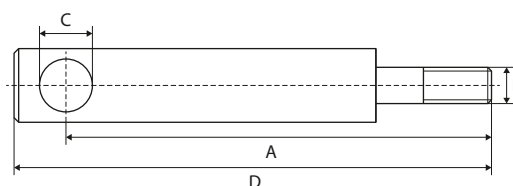
WWW.CROVORG.PL

CYLINDER PARTS – PIÈCES DE CYLINDRE – ZYLINDER-ERSATZTEILE

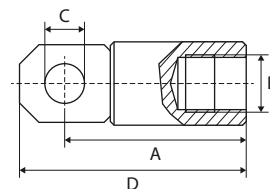
ROD ENDS ROTULES – GELENKKÖPFE



REF	A	B	C	D	Info
<u>111TP2296</u>	60 mm	M33	25 mm	80 mm	OK310
<u>111TP2298</u>	120 mm	M33	25 mm	140 mm	OK310
<u>111TP2299</u>	150 mm	M33	25 mm	170 mm	OK310
<u>111TP2297</u>	180 mm	M33	25 mm	220 mm	OK310
<u>111TP2301</u>	210 mm	M33	25 mm	232 mm	OK310
<u>111TP2302</u>	240 mm	M33	25 mm	262 mm	OK310



REF	A	B	C	D	Info
<u>111TP2303</u>	385 mm	M49	30,2 mm	405 mm	

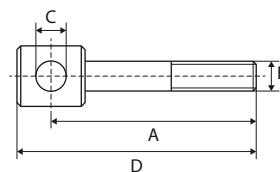


REF	A	B	C	D	Info
<u>111TP2307</u>	60 mm	30 mm	20,7 mm	78 mm	
<u>111TP2306</u>	60 mm	35 mm	21 mm	78 mm	
<u>111TP2304</u>	70 mm	35 mm	25 mm	90 mm	ARM 25
<u>111TP5010</u>	70 mm	35 mm	25 mm	90 mm	ARM 30

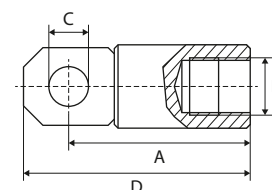
USED FOR DHOLLANDIA

WWW.CROVORG.PL

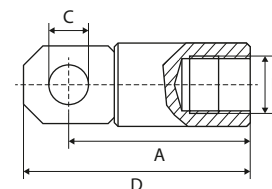
ROD ENDS ROTULES – GELENKKÖPFE



REF	A	B	C	D	Info
<u>111TP2308</u>	70 mm	M20	25 mm	87 mm	DK/DKD



REF	A	B	C	D	Info
<u>111TP2309</u>	70 mm	M33	25 mm	90 mm	ARM 30



REF	A	B	C	D	Info
<u>111TP2300</u>	95 mm	M33	35 mm	120 mm	K310

SUPPORT RODS

TIGES DE SUPPORT – KOLBENSTÜTZE



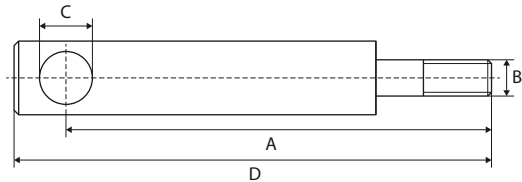
REF	A	B	C	D	Info
<u>111TP2310</u>	180 mm	49 mm	M12	M30 x 1,5 mm	150 mm – used for cylinder REF <u>111TP2220</u>
<u>111TP5095</u>	180 mm	49 mm	M12	Ø 40 mm – conical	
<u>111TP5096</u>	240 mm	49 mm	M12	Ø 40 mm – conical	
<u>111TP2311</u>	240 mm	49 mm	M12	M30 x 1,5 mm	180 mm – used for cylinder REF <u>111TP2220</u>

USED FOR DHOLLANDIA

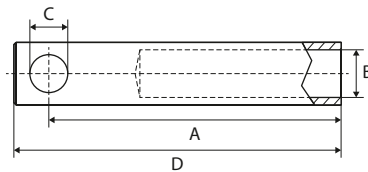
WWW.CROVORG.PL

CYLINDER PARTS – PIÈCES DE CYLINDRE – ZYLINDER-ERSATZTEILE

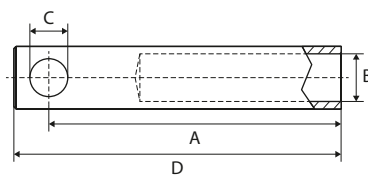
EXTENSIONS RALLONGES – VERLÄNGERUNG



REF	A	B	C	D	Info
<u>111TP2312</u>	325 mm	M49	30 mm	349 mm	
<u>111TP2313</u>	445 mm	M49	30 mm	467 mm	
<u>111TP2314</u>	325 mm	M49	35 mm	349 mm	



REF	A	B	C	D	Info
<u>111TP2315</u>	490 mm	55 mm	30 mm	513 mm	ED150
<u>111TP2316</u>	550 mm	55 mm	30 mm	572 mm	ED150
<u>111TP2317</u>	610 mm	55 mm	30 mm	633 mm	ED150
<u>111TP2318</u>	670 mm	55 mm	30 mm	692 mm	ED150
<u>111TP2319</u>	730 mm	55 mm	30 mm	753 mm	ED150
<u>111TP2320</u>	830 mm	55 mm	30 mm	853 mm	ED150



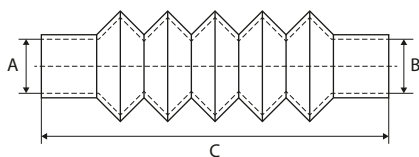
REF	A	B	C	D	Info
<u>111TP2321</u>	315 mm	M33	34 mm	338 mm	ED150

USED FOR DHOLLANDIA

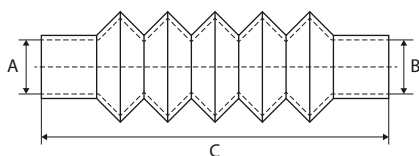
WWW.CROVORG.PL

DUST COVERS

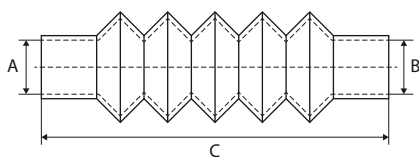
CACHE-POUSSIÈRE – STAUBKAPPE



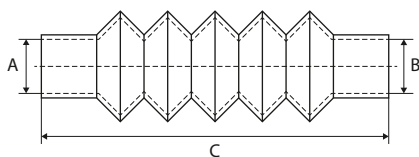
REF	Ø A/B	Min-C-Max	#1	#2
<u>111TP2322</u>	50/70 mm	120-310-500 mm	<u>111TP4916</u>	<u>111TP4918</u>



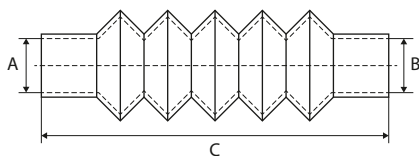
REF	Ø A/B	Min-C-Max	#1	#2
<u>111TP2323</u>	55/130 mm	140-350-550 mm	<u>111TP4999</u>	<u>111TP4924</u>



REF	Ø A/B	Min-C-Max	#1	#2
<u>111TP2324</u>	60/85 mm	90-160-265 mm	<u>111TP5004</u>	<u>111TP5005</u>



REF	Ø A/B	Min-C-Max	#1	#2
<u>111TP2325</u>	70/70 mm	110-250-450 mm	<u>111TP4916</u>	<u>111TP5005</u>



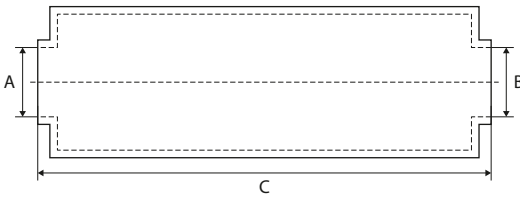
REF	Ø A/B	Min-C-Max	#1	#2
<u>111TP2326</u>	70/90 mm	125-225-290 mm	<u>111TP4916</u>	<u>111TP4921</u>

USED FOR DHOLLANDIA

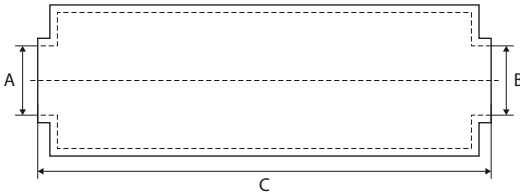
WWW.CROVORG.PL

PROTECTION COVERS

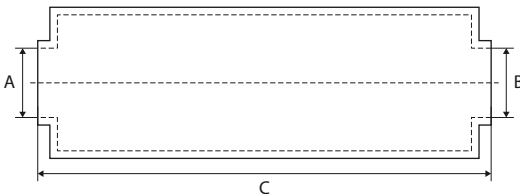
HOUSSES DE PROTECTION – SCHUTZROHRE



REF	Ø A/B	C
111TP2327	55/65 mm	63 mm



REF	Ø A/B	C	#1
111TP2328	60/90 mm	120 mm	111TP5004



REF	Ø A/B	C	#1
111TP2329	65/75 mm	380 mm	111TP5004

LOCKING RINGS

BAGUES D'ARRÊT – SICHERUNGSRINGE



REF	Info
111TP2330	M49

USED FOR DHOLLANDIA

WWW.CROVORG.PL

BRACKETS SUPPORTS – BÜGEL



REF

Info

[111TP2331](#)

Used for REF [111TP2225](#) – GS140

ADJUSTABLE BUSHINGS BAGUES RÉGLABLES – EINSTELLBUCHSEN



REF

Info

[111TP2332](#)

Ø 75 x 85 mm

SUPPORTS SUPPORTS – STÜTZE



REF

Info

[111TP2333](#)

DKD



REF

Info

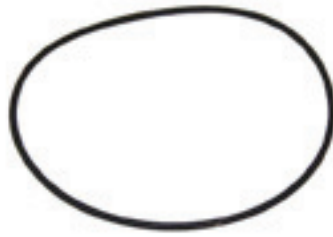
[111TP2334](#)

DKC1300

CYLINDER PARTS – PIÈCES DE CYLINDRE – ZYLINDER-ERSATZTEILE

O-RINGS

JOINTS TORIQUES – O-RINGE



REF	Info	REF	Info
111TP2335	Ø 9,25 x 1,78 mm	111TP2368	Ø 55 x 3 mm
111TP2336	Ø 11 x 1,7 mm	111TP2369	Ø 55 x 4 mm
111TP2337	Ø 14 x 1,7 mm	111TP2370	Ø 60 x 3 mm
111TP2338	Ø 15 x 2 mm	111TP2371	Ø 60 x 5 mm
111TP2339	Ø 16 x 2 mm	111TP2372	Ø 60 x 6 mm
111TP2340	Ø 16 x 2,5 mm	111TP2373	Ø 62 x 5 mm
111TP2341	Ø 16,4 x 2 mm	111TP2374	Ø 65 x 4 mm
111TP2342	Ø 17 x 2,5 mm	111TP2375	Ø 72 x 5 mm
111TP2343	Ø 17 x 3,53 mm	111TP2376	Ø 75 x 4 mm
111TP2344	Ø 19 x 1,6 mm	111TP2377	Ø 80 x 3 mm
111TP2345	Ø 19 x 3 mm	111TP2378	Ø 80 x 5 mm
111TP2346	Ø 20 x 3 mm	111TP2379	Ø 85 x 3 mm
111TP2347	Ø 21 x 2 mm	111TP2380	Ø 85 x 4 mm
111TP2348	Ø 22 x 2 mm	111TP2381	Ø 85 x 5 mm
111TP2349	Ø 22 x 3 mm	111TP2382	Ø 88,5 x 3,53 mm
111TP2350	Ø 25 x 3 mm	111TP2383	Ø 89,3 x 5,7 mm
111TP2351	Ø 29 x 4 mm	111TP2384	Ø 90 x 3 mm
111TP2352	Ø 30 x 5 mm	111TP2385	Ø 90 x 5 mm
111TP2353	Ø 30,2 x 3 mm	111TP2386	Ø 95 x 4 mm
111TP2354	Ø 35 x 3 mm	111TP2387	Ø 95 x 5 mm
111TP2355	Ø 35 x 4 mm	111TP2388	Ø 99 x 5,7 mm
111TP2356	Ø 37 x 3 mm	111TP2389	Ø 100 x 5 mm
111TP2357	Ø 37 x 4 mm	111TP2390	Ø 105 x 3 mm
111TP2358	Ø 37 x 5 mm	111TP2391	Ø 105 x 4 mm
111TP2359	Ø 40 x 5 mm	111TP2392	Ø 110 x 4 mm
111TP2360	Ø 42 x 5 mm	111TP2393	Ø 110 x 5 mm
111TP2361	Ø 45 x 2,5 mm	111TP2394	Ø 115 x 3 mm
111TP2362	Ø 45 x 4 mm	111TP2395	Ø 115 x 4 mm
111TP2363	Ø 45 x 5 mm	111TP2396	Ø 120 x 5 mm
111TP2364	Ø 50 x 2,8 mm	111TP2397	Ø 120 x 6 mm
111TP2365	Ø 50 x 4 mm	111TP2398	Ø 125 x 3 mm
111TP2366	Ø 50 x 5 mm	111TP2399	Ø 125 x 4 mm
111TP2367	Ø 52 x 5 mm	111TP2400	Ø 145 x 4 mm

USED FOR DHOLLANDIA

WWW.CROVORG.PL

SEAL RINGS

BAGUES D'ÉTANCHÉITÉ – DICHTRING



REF	Info
<u>111TP2401</u>	Ø 14 x 10 mm
<u>111TP2402</u>	Ø 14,5 x 10 mm

CU-SEALS

JOINTS CU – CU-DICHTUNG



REF	Info
<u>111TP2403</u>	Ø M10 – 10,7 x 16,08 x 1,5 mm
<u>111TP2404</u>	Ø 1/4" – 13,74 x 20,57 x 2 mm
<u>111TP2405</u>	Ø 3/8" – 17,28 x 23,8 x 2 mm
<u>111TP2406</u>	Ø M18 – 18,7 x 26 x 1,5 mm
<u>111TP2407</u>	Ø 1/2" – 21,54 x 28,58 x 2,5 mm

SCRAPERS

SEGMENTS RACLEURS – ABSTREIFER



REF	Info
<u>111TP2408</u>	35 x 43 x 5/7 mm
<u>111TP2409</u>	45 x 53 x 5/7 mm

SEAL

JOINTS – DICHTRING



REF	Info
<u>111TP2410</u>	Ø 80 mm



REF	Info
<u>111TP2411</u>	Ø 35 mm
<u>111TP2412</u>	Ø 40 mm

SEALS & RINGS – JOINTS & RONDELLES – DICHTUNGEN & RINGE

USED FOR DHOLLANDIA

WWW.CROVORG.PL

POWER PACKS & PARTS – GROUPE HYDRAULIQUE & ACCESSOIRES – AGGREGATE & ERSATZTEILE

COVERS COUVERCLES – ABDECKUNGEN



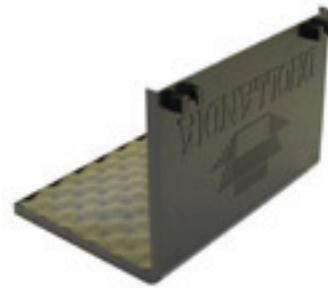
REF	Info
<u>111TP2413</u>	450 x 235 x 180 mm – 3 kW



REF	Info
<u>111TP2414</u>	410 x 335 x 230 mm – 2 kW



REF	Info
<u>111TP2415</u>	325 x 265 x 250 mm – 2 kW



REF	Info
<u>111TP2416</u>	375 x 280 x 265 mm – 3 kW



REF	Info
<u>111TP2417</u>	355 x 285 x 150 mm



REF	Info
<u>111TP2418</u>	385 x 355 x 295 mm – LM4



REF	Info
<u>111TP2419</u>	395 x 310 x 170 mm



REF	Info
<u>111TP2420</u>	415 x 320 x 180 mm – 2010

USED FOR DHOLLANDIA

WWW.CROVORG.PL

COVERS

COUVERCLES – ABDECKUNGEN



REF	Info
<u>111TP2421</u>	415 x 250 x 240 mm



REF	Info
<u>111TP2422</u>	388 x 325 x 250 mm – LM10 2012–...



REF	Info
<u>111TP2423</u>	338 x 160 x 115 mm – 2009–...

FLANGES

FLASQUES – FLANSCH



REF	Info
<u>111TP2424</u>	Left



REF	Info
<u>111TP2425</u>	Right

USED FOR DHOLLANDIA

WWW.CROVORG.PL

POWER PACKS & PARTS – GROUPE HYDRAULIQUE & ACCESSOIRES – AGGREGATE & ERSATZTEILE

CASES

BOÎTIERS – GEHÄUSE



REF	Info
<u>111TP2426</u>	Left – 2 kW



REF	Info
<u>111TP2427</u>	Right – 2 kW



REF	Info
<u>111TP2428</u>	Left – 3 kW



REF	Info
<u>111TP2429</u>	Right – 3 kW



REF	Info
<u>111TP2430</u>	Left – 2008 – SM80



REF	Info
<u>111TP2431</u>	Right – 2008 – SM80



REF	Info
<u>111TP2432</u>	380 x 320 x 245 mm – LMQ/LM42

TANKS & OIL RESERVOIRS

RÉSERVOIRS (D'HUILE) – TANKS & ÖLBEHÄLTER



REF	Info
<u>111TP2433</u>	Left – 350 mm – 10 liter



REF	Info
<u>111TP2434</u>	Right – 350 mm – 10 liter



REF	Info
<u>111TP2435</u>	Right – 3,8 liter



REF	Info
<u>111TP2436</u>	180 mm – 6 liter



REF	Info
<u>111TP2437</u>	Left – 300 mm – 6 liter



REF	Info
<u>111TP2438</u>	Right – 300 mm – 6 liter



REF	Info
<u>111TP2439</u>	Left/right – 6 liter



REF	Info
<u>111TP2440</u>	Right – 740 mm – 7 liter

USED FOR DHOLLANDIA

WWW.CROVORG.PL

POWER PACKS & PARTS – GROUPE HYDRAULIQUE & ACCESSOIRES – AGGREGATE & ERSATZTEILE

FILTERS & BREATHERS

FILTRES & RENIFLARDS – FILTER & ENTLÜFTER



REF	Info
<u>111TP2441</u>	Ø 25 x 43,3 mm – 3/8" NPT



REF	Info
<u>111TP2442</u>	Ø 29 x 46 x 92 mm – Hesselman



REF	Info
<u>111TP2443</u>	Ø 15 x 26 x 47,1 mm



REF	Info
<u>111TP2444</u>	Ø 20 x 36 mm – 1/2" BSP



REF	Info
<u>111TP2445</u>	24 x 63 mm – > 2008



REF	Info
<u>111TP2446</u>	1/2"



REF	Info
<u>111TP2447</u>	1/2" BSP



REF	Info
<u>111TP2448</u>	Ø 21 x 131 mm

USED FOR DHOLLANDIA

WWW.CROVORG.PL

FILTERS & BREATHERS

FILTRES & RENIFLARDS – FILTER & ENTLÜFTER



REF	Info
<u>111TP2449</u>	M30 x 1,5 mm



REF	Info
<u>111TP2450</u>	3/4"



REF	Info
<u>111TP2451</u>	3/4"

LOCKS

SERRURES – VERRIEGELUNGEN



REF	Info
<u>111TP2452</u>	Old type



REF	Info
<u>111TP2453</u>	New type



REF	Info
<u>111TP2454</u>	Used for REF <u>111TP2453</u>



REF	Info
<u>111TP2455</u>	

USED FOR DHOLLANDIA

WWW.CROVORG.PL

POWER PACKS & PARTS – GROUPE HYDRAULIQUE & ACCESSOIRES – AGGREGATE & ERSATZTEILE

DRAIN PLUGS

BOUCHONS DE VIDANGE – ABLASSSCHRAUBEN



REF

Info

[111TP2456](#)

3/8"

BRACKETS

SUPPORTS – BÜGEL



REF

Info

[111TP2457](#)

PVC

USED FOR DHOLLANDIA

WWW.CROVORG.PL

ELECTRIC MOTORS

MOTEURS ÉLECTRIQUES – ELEKTROMOTOREN



REF	Volt	kW	Rotation
<u>111TP2458</u>	12 V	2 kW	CW >>
<u>111TP2459</u>	24 V	2 kW	CW >>

REF	Volt	kW	Rotation
<u>111TP2461</u>	24 V	3 kW	CW >>



REF	Volt	kW	Rotation
<u>111TP2460</u>	12 V	0,5 kW	<< CCW/CW >>

REF	Volt	kW	Rotation
<u>111TP2462</u>	24 V	0,5 kW	



REF	Volt	kW	Rotation
<u>111TP2463</u>	24 V	3 kW	CW >>

REF	Volt	kW	Rotation
<u>111TP2464</u>	24 V	4,5 kW	CW >>



REF	Volt	kW	Rotation
<u>111TP2465</u>	24 V	0,8 kW	CW >>

REF	Volt	kW	Rotation
<u>111TP2466</u>	24 V		

USED FOR DHOLLANDIA

WWW.CROVORG.PL

MOTORS, PUMPS & PARTS - MOTEURS, POMPES & ACCESSOIRES - MOTOREN, PUMPEN & ERSATZTEILE

HYDRAULIC PUMPS

POMPES HYDRAULIQUES - HYDRAULIKPUMPEN



REF	CC	Rotation	Info
<u>111TP2467</u>	0,8 cc	<< CCW	MD-TYP
<u>111TP2468</u>	1,7 cc	<< CCW	MD-TYP
<u>111TP2469</u>	2,5 cc	<< CCW	MD-TYP
<u>111TP2470</u>	3,3 cc	<< CCW	MD-TYP
<u>111TP2471</u>	4,3 cc	<< CCW	MD-TYP

REF	CC	Rotation	Info
<u>111TP2472</u>	3,3 cc	<< CCW	PD-TYP



REF	CC	Rotation	Info
<u>111TP2473</u>	8 cc	<< CCW	

REF	Info
<u>111TP2474</u>	SM8

USED FOR DHOLLANDIA

WWW.CROVORG.PL

SOLENOID SWITCHES/CONTACTORS

SOLÉNOÏDES/CONTACTEURS – MAGNETSCHALTER/SCHÜTZE



REF	Volt	Amp	Info
111TP2475	12 V	150 A	300 A/5 sec
111TP2476	24 V	150 A	300 A/5 sec



REF	Volt	Amp	Info
111TP2477	12 V	125 A	
111TP2478	24 V	125 A	



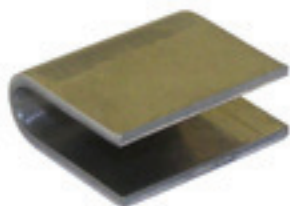
REF	Volt	Amp	Info
111TP5097	12 V	125 A	
111TP2479	24 V	125 A	



REF	Info
111TP3120	24 V – 150 A

COUPLERS

COUPLEURS – KUPPLUNGEN



REF	Info
111TP2480	15 x 13,8 x 5,9 mm



REF	Info
111TP2481	Ø 30 x 12 mm

BRUSHES

BALAIS – KOHLEBÜRSTEN



REF	Info
111TP1223	15,8 x 8,9 x 15,8 mm – 24 V



REF	Info
111TP2482	24,8 x 9,9 x 22,9 mm

ELECTRIC MOTORS WITH PUMP

MOTEURS ÉLECTRIQUES AVEC POMPE – ELEKTROMOTOREN MIT PUMPE



REF	Info
<u>111TP2483</u>	12 V – 2 kW – 1,7 cc



REF	Info
<u>111TP2484</u>	12 V – 2 kW – 2,5 cc



REF	Info
<u>111TP2485</u>	24 V – 2 kW – 1,7 cc
<u>111TP5011</u>	24 V – 2 kW – 2,5 cc



REF	Info
<u>111TP2487</u>	24 V – 3 kW – 3,3 cc



REF	Info
<u>111TP2488</u>	24 V – 4,5 kW – 2,5 cc

USED FOR DHOLLANDIA

WWW.CROVORG.PL

BRUSH ROCKERS

COLLIERS PORTE-BALAIS – KOHLENHALTER



REF	Info
<u>111TP1225</u>	Ø 105 mm

BEARINGS

ROULEMENTS – LAGER



REF	Info
<u>111TP1226</u>	Ø 12/32 x 10 mm
<u>111TP1227</u>	Ø 17/35 x 10 mm

SUPPORTS

SUPPORTS – HALTER



REF	Info
<u>111TP2489</u>	105 x 100 x 31/43 mm



REF	Info
<u>111TP2490</u>	103 x 74 mm



REF	Info
<u>111TP2491</u>	Ø 110 mm – 2000 W



REF	Info
<u>111TP2492</u>	Ø 128 mm

MOTORS, PUMPS & PARTS – MOTEURS, POMPES & ACCESSOIRES – MOTOREN, PUMPEN & ERSATZTEILE

HOSES

TUYAUX - SCHLÄUCHE



REF	Hose Ø	Hose Ø	Length	Fitting 1	Fitting 2	Info
111TP2493	1/4"	6,4 mm	345 mm	M18 x 1,5 mm	M18 x 1,5 mm	-40-100 °C
111TP2494	1/4"	6,4 mm	350 mm	M18 x 1,5 mm	M18 x 1,5 mm	-40-100 °C
111TP2495	1/4"	6,4 mm	500 mm	M18 x 1,5 mm	M18 x 1,5 mm	-40-100 °C
111TP2496	1/4"	6,4 mm	650 mm	M18 x 1,5 mm	M18 x 1,5 mm	-40-100 °C
111TP2497	1/4"	6,4 mm	800 mm	M18 x 1,5 mm	M18 x 1,5 mm	-40-100 °C
111TP2498	1/4"	6,4 mm	1200 mm	M18 x 1,5 mm	M18 x 1,5 mm	-40-100 °C



REF	Hose Ø	Hose Ø	Length	Fitting 1	Fitting 2	Info
111TP2499	1/4"	6,4 mm	400 mm	Ø 10 mm	Ø 10 mm	-40-100 °C
111TP2500	1/4"	6,4 mm	450 mm	Ø 10 mm	Ø 10 mm	-40-100 °C
111TP2501	1/4"	6,4 mm	500 mm	Ø 10 mm	Ø 10 mm	-40-100 °C
111TP2502	1/4"	6,4 mm	700 mm	Ø 10 mm	Ø 10 mm	-40-100 °C
111TP2503	1/4"	6,4 mm	800 mm	Ø 10 mm	Ø 10 mm	-40-100 °C
111TP5129	1/4"	6,4 mm	1000 mm	Banjo BSP 3/8"	Banjo BSP 3/8"	-40-100 °C
111TP2504	1/4"	6,4 mm	1100 mm	Ø 10 mm	Ø 10 mm	-40-100 °C
111TP2505	1/4"	6,4 mm	1300 mm	Ø 10 mm	Ø 10 mm	-40-100 °C
111TP2506	1/4"	6,4 mm	1400 mm	Ø 10 mm	Ø 10 mm	-40-100 °C
111TP2507	1/4"	6,4 mm	1600 mm	Ø 10 mm	Ø 10 mm	-40-100 °C
111TP2508	1/4"	6,4 mm	1800 mm	Ø 10 mm	Ø 10 mm	-40-100 °C
111TP2509	1/4"	6,4 mm	2300 mm	Ø 10 mm	Ø 10 mm	-40-100 °C
111TP2510	1/4"	6,4 mm	2500 mm	Banjo 10 mm	Banjo 10 mm	-40-100 °C
111TP2511	1/4"	6,4 mm	2700 mm	Ø 10 mm	Ø 10 mm	-40-100 °C
111TP2512	1/4"	6,4 mm	3000 mm	Ø 10 mm	Ø 10 mm	-40-100 °C
111TP2513	1/4"	6,4 mm	3250 mm	Ø 10 mm	Ø 10 mm	-40-100 °C
111TP2514	1/4"	6,4 mm	3500 mm	Ø 10 mm	Ø 10 mm	-40-100 °C
111TP2515	3/8"	9,5 mm	950 mm	Ø 3,8 mm	Ø 3,8 mm	-40-100 °C
111TP2516	3/8"	9,5 mm	1100 mm	Banjo BSP 3/8"	Banjo BSP 3/8"	-40-100 °C
111TP2517	3/8"	9,5 mm	1500 mm	Banjo BSP 3/8"	Banjo BSP 3/8"	-40-100 °C
111TP2518	3/8"	9,5 mm	2650 mm	Banjo BSP 3/8"	Banjo BSP 3/8"	-40-100 °C

USED FOR DHOLLANDIA

WWW.CROVORG.PL

HOSES

TUYAUX – SCHLÄUCHE



REF	Hose Ø	Hose Ø	Length	Fitting 1	Fitting 2	Info
111TP2519	1/4"	6,4 mm	550 mm	M18 x 1,5 mm	Ø 10 mm	-40–100 °C
111TP2521	1/4"	6,4 mm	750 mm	M18 x 1,5 mm	Ø 10 mm	-40–100 °C
111TP2522	1/4"	6,4 mm	900 mm	M18 x 1,5 mm	Ø 10 mm	-40–100 °C
111TP2523	1/4"	6,4 mm	1000 mm	M18 x 1,5 mm	Ø 10 mm	-40–100 °C
111TP2525	1/4"	6,4 mm	1320 mm	M18 x 1,5 mm	Ø 10 mm	-40–100 °C
111TP2526	1/4"	6,4 mm	1560 mm	M18 x 1,5 mm	Ø 10 mm	-40–100 °C
111TP2527	1/4"	6,4 mm	1600 mm	M18 x 1,5 mm	Ø 10 mm	-40–100 °C
111TP2528	1/4"	6,4 mm	1820 mm	M18 x 1,5 mm	Ø 10 mm	-40–100 °C
111TP2529	1/4"	6,4 mm	2000 mm	M18 x 1,5 mm	Ø 10 mm	-40–100 °C
111TP2530	1/4"	6,4 mm	2400 mm	M18 x 1,5 mm	Ø 10 mm	-40–100 °C
111TP2531	1/4"	6,4 mm	2500 mm	M18 x 1,5 mm	Ø 10 mm	-40–100 °C
111TP2532	1/4"	6,4 mm	2700 mm	M18 x 1,5 mm	Ø 10 mm	-40–100 °C
111TP2533	1/4"	6,4 mm	2900 mm	M18 x 1,5 mm	Ø 10 mm	-40–100 °C
111TP2534	1/4"	6,4 mm	3150 mm	M18 x 1,5 mm	Ø 10 mm	-40–100 °C
111TP2535	3/8"	9,5 mm	1850 mm	M18 x 1,5 mm	Ø 10 mm	-40–100 °C



REF	Hose Ø	Hose Ø	Length	Info
111TP2536	3/8"	9,5 mm	230 mm	-40–100 °C
111TP2537	1/2"	12,7 mm	260 mm	-40–100 °C
111TP2538	3/4"	19 mm	80 mm	-40–100 °C



REF	Hose Ø	Hose Ø	Length	Fitting 1	Fitting 2	Info
111TP2539	3/8"	9,5 mm	350 mm	M18 x 1,5 mm	M18 x 1,5 mm	-40–100 °C
111TP2540	3/8"	9,5 mm	500 mm	M18 x 1,5 mm	M18 x 1,5 mm	-40–100 °C

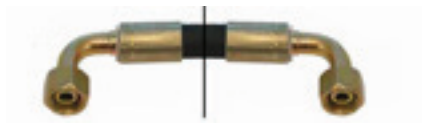
USED FOR DHOLLANDIA

WWW.CROVORG.PL

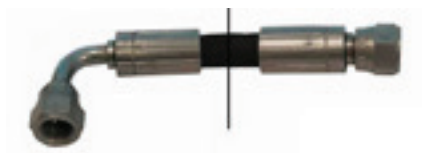
HOSES & FITTINGS - TUYAUX & RACCORDS - SCHLÄUCHE & KUPPLUNGEN

HOSES

TUYAUX - SCHLÄUCHE



REF	Hose Ø	Hose Ø	Length	Fitting 1	Fitting 2	Info
<u>111TP2541</u>	1/4"	6,4 mm	600 mm	M18 x 1,5 mm	M18 x 1,5 mm	-40-100 °C
<u>111TP2542</u>	1/4"	6,4 mm	2100 mm	M18 x 1,5 mm	M18 x 1,5 mm	-40-100 °C
<u>111TP2543</u>	1/4"	6,4 mm	2250 mm	M18 x 1,5 mm	M18 x 1,5 mm	-40-100 °C
<u>111TP2545</u>	1/4"	6,4 mm	2500 mm	M18 x 1,5 mm	M18 x 1,5 mm	-40-100 °C
<u>111TP2546</u>	5/16"	8 mm	600 mm	M18 x 1,5 mm	M18 x 1,5 mm	-40-100 °C



REF	Hose Ø	Hose Ø	Length	Fitting 1	Fitting 2	Info
<u>111TP2547</u>	1/4"	6,4 mm	750 mm	R1/4"	R1/4"	-40-100 °C
<u>111TP2548</u>	1/4"	6,4 mm	2500 mm	R1/4"	R1/4"	-40-100 °C
<u>111TP2549</u>	3/8"	9,5 mm	600 mm	M18 x 1,5 mm	M18 x 1,5 mm	-40-100 °C
<u>111TP2550</u>	3/8"	9,5 mm	750 mm	M18 x 1,5 mm	M18 x 1,5 mm	-40-100 °C
<u>111TP2551</u>	3/8"	9,5 mm	1000 mm	M18 x 1,5 mm	M18 x 1,5 mm	-40-100 °C
<u>111TP2552</u>	3/8"	9,5 mm	2500 mm	M18 x 1,5 mm	M18 x 1,5 mm	-40-100 °C
<u>111TP2553</u>	3/8"	9,5 mm	2500 mm	M18 x 1,5 mm	M18 x 1,5 mm	-40-100 °C
<u>111TP2554</u>	3/8"	9,5 mm	4500 mm	M18 x 1,5 mm	M18 x 1,5 mm	-40-100 °C



REF	Hose Ø	Hose Ø	Length	Fitting 1	Fitting 2	Info
<u>111TP2555</u>	1/4"	6,4 mm	250 mm	M18 x 1,5 mm	Ø 10 mm	-40-100 °C
<u>111TP2256</u>	1/4"	6,4 mm	650 mm	M18 x 1,5 mm	Ø 3,8 mm	-40-100 °C
<u>111TP2557</u>	1/4"	6,4 mm	1200 mm	M18 x 1,5 mm	Ø 3,8 mm	-40-100 °C
<u>111TP2558</u>	3/8"	9,5 mm	650 mm	M18 x 1,5 mm	Ø 3,8 mm	-40-100 °C
<u>111TP2559</u>	3/8"	9,5 mm	950 mm	M18 x 1,5 mm	Ø 3,8 mm	-40-100 °C
<u>111TP2560</u>	3/8"	9,5 mm	1200 mm	M18 x 1,5 mm	Ø 3,8 mm	40-100 °C

USED FOR DHOLLANDIA

WWW.CROVORG.PL

HOSES

TUYAUX – SCHLÄUCHE



REF	Hose Ø	Hose Ø	Length	Fitting 1	Fitting 2	Info
<u>111TP2561</u>	1/4"	6,4 mm	500 mm	M12 x 1,5 mm	Ø 10 mm	-40-100 °C
<u>111TP2562</u>	1/4"	6,4 mm	700 mm	M12 x 1,5 mm	Ø 10 mm	-40-100 °C
<u>111TP2563</u>	1/4"	6,4 mm	750 mm	M18 x 1,5 mm	Ø 10 mm	-40-100 °C
<u>111TP2564</u>	1/4"	6,4 mm	900 mm	M12 x 1,5 mm	Ø 10 mm	-40-100 °C
<u>111TP2565</u>	1/4"	6,4 mm	1200 mm	M18 x 1,5 mm	Ø 10 mm	-40-100 °C
<u>111TP2566</u>	1/4"	6,4 mm	2000 mm	M18 x 1,5 mm	Ø 10 mm	-40-100 °C
<u>111TP2567</u>	3/8"	9,5 mm	650 mm	M18 x 1,5 mm	Ø 3/8"	-40-100 °C
<u>111TP2568</u>	3/8"	9,5 mm	950 mm	M18 x 1,5 mm	Ø 3/8"	-40-100 °C
<u>111TP2569</u>	3/8"	9,5 mm	1200 mm	M18 x 1,5 mm	Ø 3/8"	-40-100 °C



REF	Hose Ø	Hose Ø	Length	Fitting 1	Fitting 2	Info
<u>111TP2570</u>	3/8"	9,5 mm	2450 mm	M12 x 1,5 mm	M12 x 1,5 mm	-40-100 °C

USED FOR DHOLLANDIA

WWW.CROVORG.PL

HOSES & FITTINGS – TUYAUX & RACCORDS – SCHLÄUCHE & KUPPLUNGEN

FITTINGS

RACCORDS – KUPPLUNGEN



REF	Info
<u>111TP2571</u>	M10 x 1 mm



REF	Info
<u>111TP2572</u>	Ø 1,5 mm



REF	Info
<u>111TP2573</u>	Ø 2,5 mm



REF	Info
<u>111TP2574</u>	Ø 3 mm



REF	Info
<u>111TP2575</u>	3/8" NPT – 8 mm



REF	Info
<u>111TP2576</u>	90°



REF	Info
<u>111TP2577</u>	90° – 6 mm



REF	Info
<u>111TP2578</u>	3/8" – 12 – 12



REF	Info
<u>111TP2579</u>	T10



REF	Info
<u>111TP2580</u>	T12

USED FOR DHOLLANDIA

WWW.CROVORG.PL

FITTINGS RACCORDS – KUPPLUNGEN



REF	Info
<u>111TP2581</u>	T12



REF	Info
<u>111TP2582</u>	10 mm



REF	Info
<u>111TP2583</u>	10 – 10



REF	Info
<u>111TP2584</u>	12 mm



REF	Info
<u>111TP2585</u>	12 mm



REF	Info
<u>111TP2586</u>	12 mm – 1/4"



REF	Info
<u>111TP2587</u>	12 mm – 12



REF	Info
<u>111TP2588</u>	12 mm – 3/8"



REF	Info
<u>111TP2589</u>	10 mm – 1/4"



REF	Info
<u>111TP2590</u>	10 – 10

FITTINGS

RACCORDS – KUPPLUNGEN



REF	Info
<u>111TP2591</u>	12 mm



REF	Info
<u>111TP2592</u>	12 mm – 1/4"



REF	Info
<u>111TP2593</u>	12 mm – 1/4"



REF	Info
<u>111TP2594</u>	12 mm – 1/4"



REF	Info
<u>111TP2595</u>	12 mm – 1/2"



REF	Info
<u>111TP2596</u>	12 mm – 1/2"



REF	Info
<u>111TP2597</u>	12 mm – 3/8"



REF	Info
<u>111TP2598</u>	12 mm – 3/8"



REF	Info
<u>111TP2599</u>	No return



REF	Info
<u>111TP2600</u>	M18 x 1,5 mm – 3/8"

USED FOR DHOLLANDIA

WWW.CROVORG.PL

FITTINGS RACCORDS – KUPPLUNGEN



REF	Info
<u>111TP2601</u>	M18 x 1,5 x 70 mm



REF	Info
<u>111TP2602</u>	1/4"



REF	Info
<u>111TP2603</u>	3/8"



REF	Info
<u>111TP2604</u>	3/8" BSP



REF	Info
<u>111TP2605</u>	M10 x 1 mm

HOSES & FITTINGS – TUYAUX & RACCORDS – SCHLÄUCHE & KUPPLUNGEN

USED FOR DHOLLANDIA

WWW.CROVORG.PL

COILS & VALVES – BOBINES & SOUPAPES – SPULEN & VENTILE

SOLENOID VALVES ÉLECTROVANNES – MAGNETVENTILE



REF	Volt	Ø	Info
<u>111TP2606</u>	12 V	12,7 mm	3/4" UNF – SA
<u>111TP2607</u>	24 V	12,7 mm	3/4" UNF – SA



REF	Volt	Ø	Info
<u>111TP2608</u>	12 V	12,7 mm	3/4" UNF – SA
<u>111TP2609</u>	24 V	12,7 mm	3/4" UNF – SA



REF	Volt	Ø	Info
<u>111TP2610</u>	12 V	12,7 mm	3/4" UNF – SA
<u>111TP2611</u>	24 V	12,7 mm	3/4" UNF – SA



REF	Volt	Ø	Info
<u>111TP2612</u>	12 V	12,7 mm	3/4" UNF – SA
<u>111TP2613</u>	24 V	12,7 mm	3/4" UNF – SA



REF	Volt	Ø	Info
<u>111TP2614</u>	12 V	12,7 mm	3/4" UNF – DA
<u>111TP2615</u>	24 V	12,7 mm	3/4" UNF – DA



REF	Volt	Ø	Info
<u>111TP2616</u>	12 V	12,7 mm	3/4" UNF – SA
<u>111TP2618</u>	24 V	12,7 mm	3/4" UNF – SA



REF	Volt	Ø	Info
<u>111TP2619</u>	12 V	12,7 mm	3/4" UNF – DA
<u>111TP2617</u>	24 V	12,7 mm	3/4" UNF – SA



REF	Volt	Ø	Info
<u>111TP2620</u>	12 V	12,7 mm	3/4" UNF – DA
<u>111TP2621</u>	24 V	12,7 mm	3/4" UNF – DA

USED FOR DHOLLANDIA

WWW.CROVORG.PL

SOLENOID VALVES ÉLECTROVANNES – MAGNETVENTILE



REF	Volt	Ø	Info
<u>111TP2621</u>	24 V	12,7 mm	3/4" UNF – DA



REF	Volt	Ø	Info
<u>111TP5140</u>	12 V	12,7 mm	M18 x 1,5 mm – SA
<u>111TP2623</u>	24 V	12,7 mm	M18 x 1,5 mm – SA



REF	Volt	Ø	Info
<u>111TP5142</u>	12 V	12,7 mm	M18 x 1,5 mm – SA
<u>111TP5141</u>	24 V	12,7 mm	M18 x 1,5 mm – SA



REF	Volt	Ø	Info
<u>111TP5143</u>	12 V	12,7 mm	M18 x 1,5 mm – SA
<u>111TP2624</u>	24 V	12,7 mm	M18 x 1,5 mm – SA



REF	Volt	Ø	Info
<u>111TP5144</u>	12 V	15 mm	M20 x 1,5 mm – DA
<u>111TP2625</u>	24 V	15 mm	M20 x 1,5 mm – DA



REF	Volt	Ø	Info
<u>111TP2626</u>	24 V	15 mm	M20 x 1,5 mm – DA



REF	Volt	Ø	Info
<u>111TP5145</u>	12 V	15,8–17,4 mm	7/8" UNF – 3 way valve
<u>111TP2637</u>	24 V	15,8–17,4 mm	7/8" UNF – 3 way valve

USED FOR DHOLLANDIA

WWW.CROVORG.PL

COILS & VALVES – BOBINES & SOUPAPES – SPULEN & VENTILE

CARTRIDGES CARTOUCHES – PATRONEN



REF	Ø	Info
<u>111TP2627</u>	12,7 mm	3/4" UNF – DA



REF	Ø	Info
<u>111TP2628</u>	12,7 mm	3/4" UNF – DA



REF	Ø	Info
<u>111TP2629</u>	15 mm	M20 x 1,5 mm – DA



REF	Ø	Info
<u>111TP2630</u>	12,7 mm	3/4" UNF – SA



REF	Ø	Info
<u>111TP2631</u>	12,7 mm	3/4" UNF – SA



REF	Ø	Info
<u>111TP2632</u>	12,7–14,2–15,8 mm	3/4" UNF – open



REF	Ø	Info
<u>111TP2633</u>	12,7 – 14,2 – 15,2 mm	3/4" UNF – close



REF	Ø	Info
<u>111TP2634</u>	15,8–17,4–18,9 mm	7/8" UNF – 4/2



REF	Ø	Info
<u>111TP2635</u>	13 mm	M18 – SA



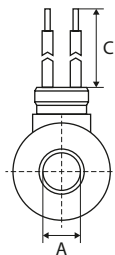
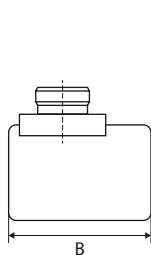
REF	Ø	Info
<u>111TP2636</u>	15,8–17,4 mm	3-way valve

USED FOR DHOLLANDIA

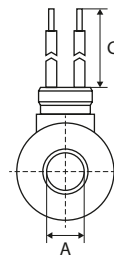
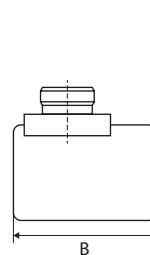
WWW.CROVORG.PL

COILS BOBINES – SPULEN

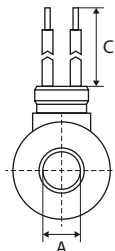
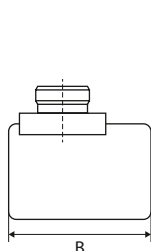
COILS & VALVES – BOBINES & SOUPAPES – SPULEN & VENTILE



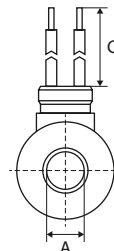
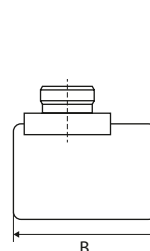
REF	Volt – Watt	A	B	Info
<u>111TP2638</u>	12 V – 18 W	13 mm	39 mm	M24 x 1 mm
<u>111TP2639</u>	24 V – 18 W	13 mm	39 mm	M24 x 1 mm



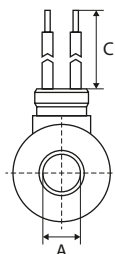
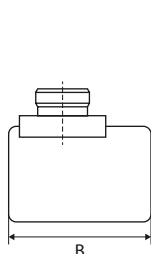
REF	Volt – Watt	A	B	C
<u>111TP2640</u>	12 V – 18 W	13 mm	39 mm	400 mm
<u>111TP2641</u>	24 V – 18 W	13 mm	39 mm	350 mm



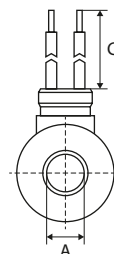
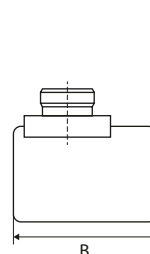
REF	Volt	A	B	Info
<u>111TP2642</u>	12 V	18 mm	40 mm	M24 x 1 mm
<u>111TP2643</u>	24 V	18 mm	40 mm	M24 x 1 mm



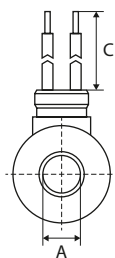
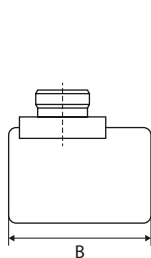
REF	Volt	A	B	C
<u>111TP2644</u>	12 V	18 mm	40 mm	420 mm
<u>111TP2645</u>	24 V	18 mm	40 mm	430 mm



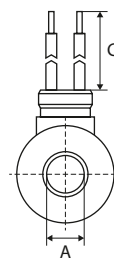
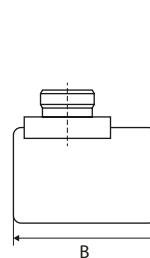
REF	Volt	A	B	Info
<u>111TP2646</u>	12 V	18 mm	40 mm	
<u>111TP2647</u>	24 V	18 mm	40 mm	



REF	Volt – Watt	A	B	Info
<u>111TP2648</u>	12 V – 60 W	22 mm	55 mm	
<u>111TP2649</u>	24 V – 60 W	22 mm	55 mm	



REF	Volt – Watt	A	B	C
<u>111TP2650</u>	12 V – 36 W	14 mm	50 mm	1000 mm



REF	Volt – Watt	A	B	C
<u>111TP2651</u>	24 V – 35 W	14 mm	50 mm	780 mm

USED FOR DHOLLANDIA

WWW.CROVORG.PL

COILS & VALVES – BOBINES & SOUPAPES – SPULEN & VENTILE

VALVE BLOCKS

BOÎTIERS À SOUPAPES – STEUERBLÖCKE



REF	Info
<u>111TP2652</u>	40 x 40 x 28/60 mm – left



REF	Info
<u>111TP2653</u>	40 x 40 x 28/60 mm – right



REF	Info
<u>111TP2654</u>	40 x 40 x 28/60 mm



REF	Info
<u>111TP2655</u>	40 x 40 x 28/60 mm



REF	Info
<u>111TP2656</u>	91 x 30 x 19/33 mm – left



REF	Info
<u>111TP2657</u>	91 x 30 x 19/33 mm – right



REF	Info
<u>111TP2658</u>	91 x 30 x 17/30 mm



REF	Info
<u>111TP2659</u>	58 x 50 x 26/30 mm

USED FOR DHOLLANDIA

WWW.CROVORG.PL

VALVE BLOCKS

BOÎTIERS À SOUPAPES – STEUERBLÖCKE



REF	Info
<u>111TP2660</u>	24 V



REF	Info
<u>111TP2661</u>	Double



REF	Info
<u>111TP2662</u>	24 V



REF	Info
<u>111TP2663</u>	24 V



REF	Info
<u>111TP2664</u>	Single



REF	Info
<u>111TP2665</u>	Double



REF	Info
<u>111TP2666</u>	M18 x 1,5x 11 mm – Ø 17 mm



REF	Info
<u>111TP2667</u>	24 V

COILS & VALVES – BOBINES & SOUPAPES – SPULEN & VENTILE

USED FOR DHOLLANDIA

WWW.CROVORG.PL

COILS & VALVES – BOBINES & SOUPAPES – SPULEN & VENTILE

VALVE BLOCKS

BOÎTIERS À SOUPAPES – STEUERBLÖCKE



REF	Info
<u>111TP2668</u>	24 V



REF	Info
<u>111TP2669</u>	24 V



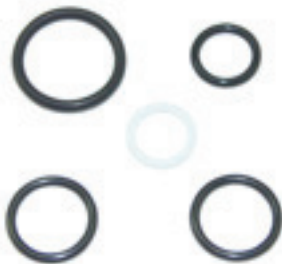
REF	Info
<u>111TP2670</u>	24 V – SM8



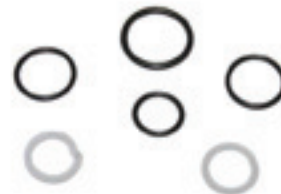
REF	Info
<u>111TP2671</u>	Right – 24 V – SM15-X

SEAL KITS

KITS DE JOINTS – DICHTUNGSSÄTZE



REF	Info
<u>111TP2677</u>	V031 – V007



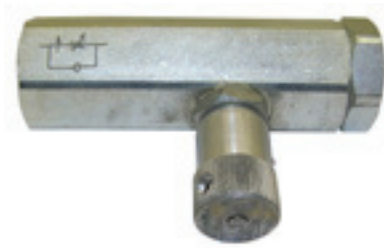
REF	Info
<u>111TP2678</u>	V041 – V042



REF	Info
<u>111TP3180</u>	V070

VALVES & SWITCHES

SOUPAPES & INTERRUPTEURS – VENTILE & SCHALTER



REF	Info
<u>111TP2672</u>	Adjustable



REF	Info
<u>111TP2673</u>	18x – Ø 8,5 mm



REF	Info
<u>111TP2674</u>	Ø 12 mm



REF	Info
<u>111TP2675</u>	Ø 12,7 mm – 3/4"



REF	Info
<u>111TP2676</u>	Ø 12/9,5 mm – L: 38,7 mm

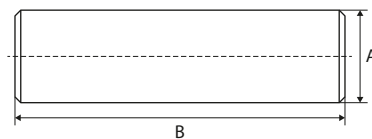
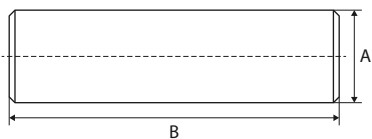
USED FOR DHOLLANDIA

WWW.CROVORG.PL

PINS, BUSHINGS & ROLLERSPINS, BUSHINGS & ROLLERS - AXES, BAGUES & GALETS - ACHSEN, BUCHSEN & ROLLEN

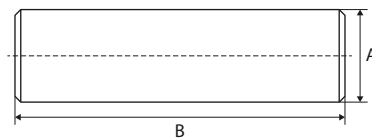
PINS

AXES - ACHSEN



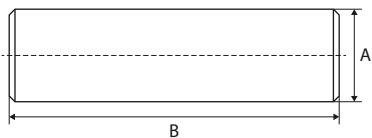
REF	A	B	Info
<u>111TP2679</u>	20 mm	67 mm	
<u>111TP2680</u>	25 mm	87 mm	
<u>111TP2681</u>	25 mm	88 mm	M8 x 1 mm
<u>111TP2682</u>	25 mm	104 mm	M8 x 1 mm
<u>111TP2683</u>	25 mm	140 mm	
<u>111TP2684</u>	25 mm	152 mm	
<u>111TP2685</u>	27 mm	182 mm	
<u>111TP2686</u>	30 mm	78 mm	M8 x 1 mm
<u>111TP2687</u>	30 mm	87 mm	M8 x 1 mm
<u>111TP2688</u>	30 mm	93 mm	M8 x 1 mm
<u>111TP2689</u>	30 mm	100 mm	
<u>111TP2690</u>	30 mm	124 mm	M8 x 1 mm
<u>111TP2691</u>	30 mm	135 mm	M8 x 1 mm
<u>111TP2692</u>	30 mm	150 mm	M8 x 1,25 mm
<u>111TP2693</u>	30 mm	158 mm	M8 x 1 mm
<u>111TP2694</u>	30 mm	180 mm	M8 x 1,25 mm
<u>111TP2695</u>	35 mm	99 mm	M8 x 1 mm
<u>111TP2696</u>	35 mm	124 mm	M8 x 1,25 mm

REF	A	B	Info
<u>111TP2697</u>	25 mm	95 mm	M8 x 1,25 mm
<u>111TP2698</u>	25 mm	129 mm	
<u>111TP2699</u>	30 mm	120 mm	M8 x 1 mm



REF	A	B	Info
<u>111TP2700</u>	27 mm	125 mm	

REF	A	B	Info
<u>111TP2701</u>	30 mm	245 mm	7/8" NF



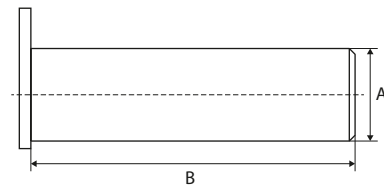
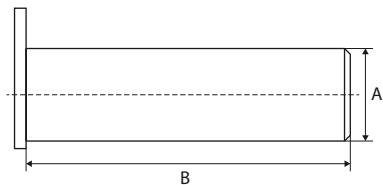
REF	A	B	Info
<u>111TP2702</u>	30 mm	200 mm	M8 x 1 mm
<u>111TP2703</u>	35 mm	209 mm	M8 x 1 mm

USED FOR DHOLLANDIA

WWW.CROVORG.PL

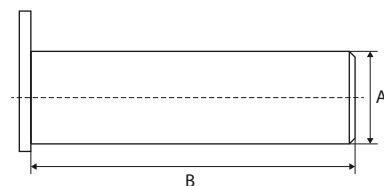
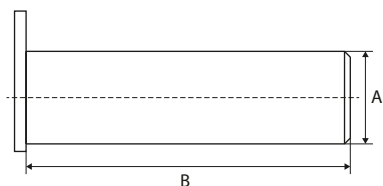
PINS

AXES – ACHSEN



REF	A	B	Info
111TP2705	25 mm	75 mm	
111TP2704	25 mm	78 mm	M8 x 1,25 mm
111TP2706	25 mm	85 mm	M8 x 1,25 mm
111TP2707	25 mm	100 mm	M8 x 1 mm
111TP2708	25 mm	128 mm	M8 x 1,25 mm
111TP2709	25 mm	165 mm	M8 x 1,25 mm
111TP2710	25 mm	195 mm	M8 x 1 mm
111TP2711	27 mm	166 mm	
111TP2712	30 mm	65 mm	M8 x 1 mm
111TP2713	30 mm	77 mm	M8 x 1,25 mm
111TP2714	30 mm	92 mm	M8 x 1,25 mm
111TP2715	30 mm	110 mm	M8 x 1,25 mm
111TP2716	30 mm	130 mm	M8 x 1 mm
111TP2717	30 mm	150 mm	M8 x 1 mm
111TP2718	30 mm	165 mm	M8 x 1 mm
111TP2719	35 mm	85 mm	M8 x 1,25 mm
111TP2720	35 mm	100 mm	M8 x 1,25 mm
111TP2721	35 mm	120 mm	M8 x 1,25 mm
111TP2722	35 mm	138 mm	M16 x 2 mm
111TP2723	35 mm	150 mm	M8 x 1,25 mm
111TP2724	35 mm	310 mm	
111TP2725	40 mm	125 mm	
111TP2726	40 mm	145 mm	M8 x 1,25 mm

REF	A	B	Info
111TP2727	25 mm	155 mm	M8 x 1,25 mm
111TP2728	30 mm	173 mm	M8 x 1 mm
111TP2729	30 mm	189 mm	M8 x 1 mm



REF	A	B	Info
111TP2730	30/35 mm	203 mm	

REF	A	B	Info
111TP2731	45 mm	126 mm	M16 x 2 mm

PINS, BUSHINGS & ROLLERSPINS, BUSHINGS & ROLLERS – AXES, BAGUES & GALETS – ACHSEN, BUCHSEN & ROLLEN

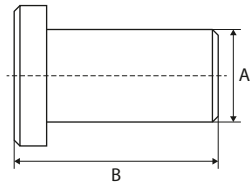
USED FOR DHOLLANDIA

WWW.CROVORG.PL

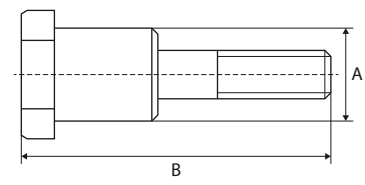
PINS, BUSHINGS & ROLLERSPINS, BUSHINGS & ROLLERS - AXES, BAGUES & GALETS - ACHSEN, BUCHSEN & ROLLEN

PINS

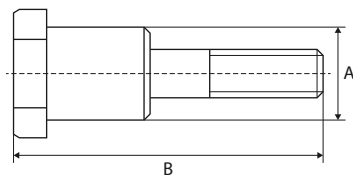
AXES - ACHSEN



REF	A	B	Info
<u>111TP2732</u>	25 mm	62 mm	M8 x 1 mm



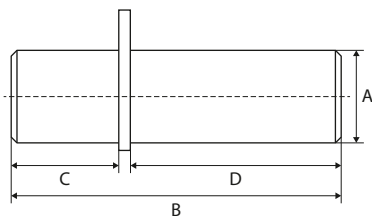
REF	A	B	Info
<u>111TP2733</u>	20 mm	76 mm	M8 x 1 mm
<u>111TP2734</u>	25 mm	91 mm	M8 x 1,25 mm
<u>111TP2735</u>	30 mm	71 mm	M8 x 1,25 mm
<u>111TP2736</u>	30 mm	91 mm	M8 x 1 mm
<u>111TP2737</u>	35 mm	102 mm	M8 x 1,25 mm
<u>111TP2738</u>	35 mm	122 mm	M8 x 1,25 mm



REF	A	B	Info
<u>111TP2739</u>	25/30 mm	109 mm	M8 x 1,25 mm



REF	A	B	Info
<u>111TP2740</u>	35 mm	210 mm	



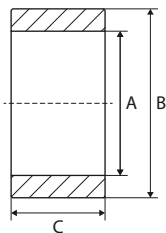
REF	A	B	C	B	Info
<u>111TP2741</u>	25 mm	187 mm	84 mm	100 mm	M8 x 1,25 mm
<u>111TP2742</u>	25 mm	189 mm	85 mm	99 mm	M8 x 1,25 mm

USED FOR DHOLLANDIA

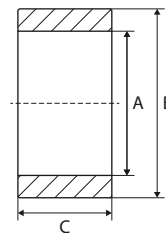
WWW.CROVORG.PL

PLATFORM ROLLERS

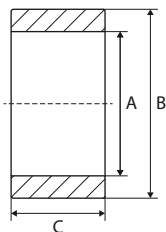
GALETS DE TRANSPALETTE – PLATTFORMROLLEN



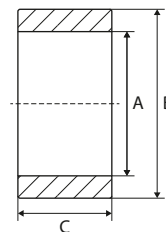
REF	A	B	C
<u>111TP2743</u>	32 mm	75 mm	20 mm
<u>111TP2744</u>	39 mm	75 mm	47 mm
<u>111TP2745</u>	40 mm	98 mm	45 mm



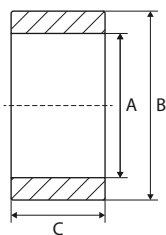
REF	A	B	C
<u>111TP2746</u>	26 mm	74 mm	40 mm
<u>111TP2747</u>	26 mm	75 mm	26 mm
<u>111TP2748</u>	30 mm	74 mm	40 mm
<u>111TP2749</u>	30 mm	100 mm	42 mm
<u>111TP2750</u>	35 mm	100 mm	40 mm



REF	A	B	C	Info
<u>111TP2751</u>	39 mm	100 mm	47 mm	Alu



REF	A	B	C
<u>111TP2752</u>	40,5 mm	115 mm	70 mm

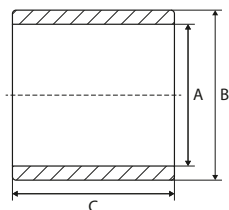


REF	A	B	C
<u>111TP2753</u>	39 mm	75 mm	24 mm

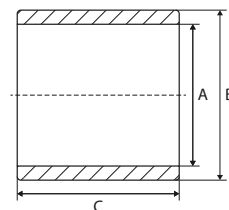
USED FOR DHOLLANDIA

WWW.CROVORG.PL

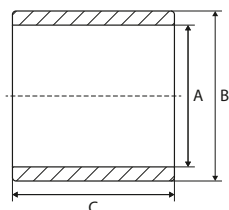
BUSHINGS BAGUES – BUCHSEN



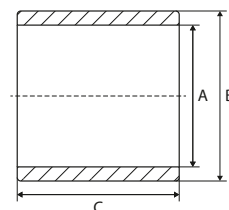
REF	A	B	C	Info
<u>111TP2754</u>	25 mm	30 mm	25 mm	
<u>111TP2755</u>	25 mm	30 mm	30 mm	
<u>111TP2756</u>	30 mm	35 mm	30 mm	
<u>111TP2757</u>	30 mm	35 mm	50 mm	
<u>111TP2758</u>	35 mm	40 mm	30 mm	



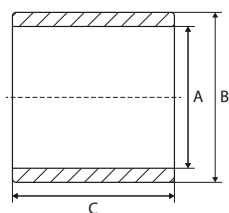
REF	A	B	C	Info
<u>111TP2759</u>	15 mm	17 mm	15 mm	DX
<u>111TP2760</u>	20 mm	23 mm	15 mm	DX
<u>111TP2761</u>	20 mm	23 mm	20 mm	DX
<u>111TP2762</u>	20 mm	23 mm	25 mm	DX
<u>111TP2763</u>	25 mm	28 mm	15 mm	DX
<u>111TP2764</u>	25 mm	28 mm	20 mm	DX
<u>111TP2765</u>	25 mm	28 mm	25 mm	DX
<u>111TP2766</u>	25 mm	28 mm	30 mm	DX
<u>111TP2767</u>	30 mm	34 mm	20 mm	DX
<u>111TP2768</u>	30 mm	34 mm	25 mm	DX
<u>111TP2769</u>	30 mm	34 mm	30 mm	DX
<u>111TP2770</u>	30 mm	34 mm	50 mm	DX
<u>111TP2771</u>	35 mm	39 mm	20 mm	DX
<u>111TP2772</u>	35 mm	39 mm	25 mm	DX
<u>111TP2773</u>	35 mm	39 mm	30 mm	DX
<u>111TP2774</u>	35 mm	39 mm	50 mm	DX
<u>111TP2775</u>	40 mm	44 mm	25 mm	DX
<u>111TP2776</u>	40 mm	44 mm	30 mm	DX
<u>111TP2777</u>	45 mm	50 mm	40 mm	DX
<u>111TP2778</u>	45 mm	50 mm	50 mm	DX



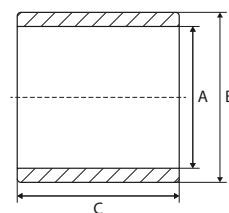
REF	A	B	C	Info
<u>111TP2779</u>	30 mm	40 mm	65 mm	



REF	A	B	C	Info
<u>111TP2780</u>	27 mm	30 mm	68 mm	



REF	A	B	C	Info
<u>111TP2781</u>	56 mm	69 mm	135 mm	



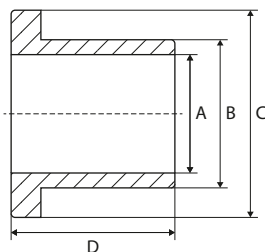
REF	A	B	C	Info
<u>111TP2781</u>	45 mm	56 mm	39 mm	Washer included

USED FOR DHOLLANDIA

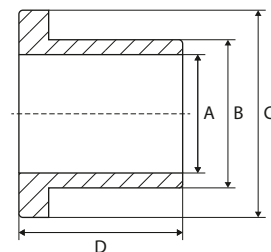
WWW.CROVORG.PL

BUSHINGS

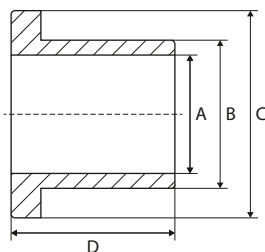
BAGUES – BUCHSEN



REF	A	B	C	D
<u>111TP2783</u>	20 mm	31 mm	39/45 mm	55 mm



REF	A	B	C	D
<u>111TP2784</u>	26 mm	38 mm	44 mm	56 mm



REF	A	B	C	D
<u>111TP2785</u>	30 mm	40 mm	45,5 mm	35 mm

DISTANCE RINGS

BAGUES D'ÉCARTEMENT – ABSTANDSRINGE



REF	Info
<u>111TP2786</u>	Ø 25/37 x 17 mm
<u>111TP2787</u>	Ø 30/42 x 17 mm
<u>111TP2788</u>	Ø 35/47 x 17 mm



REF	Info
<u>111TP2789</u>	Ø 27,5/40 x 11 mm
<u>111TP2790</u>	Ø 31/43 x 9 mm
<u>111TP2791</u>	Ø 31/44 x 14 mm
<u>111TP2792</u>	Ø 32/44 x 22,5 mm



REF	Info
<u>111TP2793</u>	Ø 25/50 x 7 mm – LM2



REF	Info
<u>111TP2794</u>	Ø 30,5/44,5 x 3 mm – DHSM

PINS, BUSHINGS & ROLLERSPINS, BUSHINGS & ROLLERS – AXES, BAGUES & GALETS – ACHSEN, BUCHSEN & ROLLEN

EYE BOLTS

BOULONS À ŒIL – RINGSCHRAUBEN



REF	Info
<u>111TP2795</u>	Ø 8 x 70 mm
<u>111TP2796</u>	Ø 10 x 70 mm
<u>111TP2797</u>	Ø 12 x 70 mm

USED FOR DHOLLANDIA

WWW.CROVORG.PL

SCREWS, NUTS & RINGS

VIS, ÉCROUS & RONDELLES – SCHRAUBEN, MUTTERN & RINGE



REF	Info
<u>111TP2798</u>	Ø 35 mm



REF	Info
<u>111TP2799</u>	Ø 50 mm



REF	Info
<u>111TP2800</u>	Ø 24/38 x 3 mm



REF	Info
<u>111TP2801</u>	M10 x 10 mm



REF	Info
<u>111TP2802</u>	M8



REF	Info
<u>111TP2803</u>	M8 x 75 mm



REF	Info
<u>111TP2804</u>	Ø 6 x 20 mm



REF	Info
<u>111TP2805</u>	Ø 6 x 22 mm



REF	Info
<u>111TP2806</u>	Ø 45 mm



REF	Info
<u>111TP2807</u>	1/4"

USED FOR DHOLLANDIA

WWW.CROVORG.PL

MECHANICAL PARTS – PIÈCES MÉCANIQUES – MECHANISCHE ERSTATZTEILE

SCREWS, NUTS & RINGS

VIS, ÉCROUS & RONDELLES – SCHRAUBEN, MUTTERN & RINGE



REF	Info
<u>111TP2808</u>	M8 x 12 mm
<u>111TP1264</u>	M8 x 16 mm
<u>111TP1265</u>	M10 x 18 mm



REF	Info
<u>111TP1266</u>	M12 x 50 mm
<u>111TP1267</u>	M16 x 30 mm
<u>111TP1268</u>	M16 x 40 mm
<u>111TP1269</u>	M16 x 80 mm



REF	Info
<u>111TP1270</u>	M8 x 75 mm
<u>111TP1271</u>	M10 x 75 mm
<u>111TP1344</u>	M14 x 150 mm
<u>111TP1272</u>	M14 x 180 mm
<u>111TP1273</u>	M14 x 230 mm
<u>111TP1274</u>	M16 x 75 mm
<u>111TP1275</u>	M16 x 150 mm
<u>111TP1276</u>	M16 x 155 mm



REF	Info
<u>111TP1277</u>	M6 x 80 mm
<u>111TP1278</u>	M8 x 30 mm
<u>111TP1279</u>	M8 x 60 mm
<u>111TP1280</u>	M16 x 45 mm
<u>111TP1281</u>	M20 x 50 mm



REF	Info
<u>111TP1282</u>	M8 x 12 mm
<u>111TP1283</u>	M10 x 20 mm



REF	Info
<u>111TP1284</u>	M6 x 12 mm
<u>111TP1285</u>	M6 x 16 mm
<u>111TP1286</u>	M12 x 30 mm

USED FOR DHOLLANDIA

WWW.CROVORG.PL

SCREWS, NUTS & RINGS

VIS, ÉCROUS & RONDELLES – SCHRAUBEN, MUTTERN & RINGE



REF	Info
<u>111TP1287</u>	M8 x 20 mm
<u>111TP1288</u>	M8 x 25 mm
<u>111TP1289</u>	M8 x 30 mm
<u>111TP1290</u>	M12 x 25 mm
<u>111TP1291</u>	M12 x 45 mm

REF	Info
<u>111TP1306</u>	M6 x 45 mm
<u>111TP1342</u>	M8 x 80 mm
<u>111TP1307</u>	M8 x 90 mm
<u>111TP1308</u>	M10 x 80 mm



REF	Info
<u>111TP1292</u>	M3
<u>111TP1293</u>	M5
<u>111TP1294</u>	M6
<u>111TP1295</u>	M8
<u>111TP1296</u>	M10
<u>111TP1297</u>	M12
<u>111TP1298</u>	M14
<u>111TP1299</u>	M16
<u>111TP1300</u>	M20

REF	Info
<u>111TP1309</u>	Ø 25 mm
<u>111TP1310</u>	Ø 28 mm
<u>111TP1311</u>	Ø 30 mm
<u>111TP1312</u>	Ø 35 mm
<u>111TP1314</u>	Ø 39 mm
<u>111TP1313</u>	Ø 40 mm



REF	Info
<u>111TP1301</u>	Ø 6 mm
<u>111TP1302</u>	Ø 8 mm
<u>111TP1303</u>	Ø 24 mm

REF	Info
<u>111TP1315</u>	M6
<u>111TP1316</u>	M8
<u>111TP1343</u>	M16

USED FOR DHOLLANDIA

WWW.CROVORG.PL

MECHANICAL PARTS – PIÈCES MÉCANIQUES – MECHANISCHE ERSTATZTEILE

SCREWS, NUTS & RINGS

VIS, ÉCROUS & RONDELLES – SCHRAUBEN, MUTTERN & RINGE



REF	Info
<u>111TP1304</u>	Ø 6 x 16 mm
<u>111TP1305</u>	Ø 8 x 60 mm

REF	Info
<u>111TP2809</u>	M20 x 2,5 mm – 1000 mm



REF	Info
<u>111TP2810</u>	M12

ROLL STOPS & PARTS

BUTÉES DE ROUES & ACCESSOIRES – ABROLLSICHERUNGEN & ERSATZTEILE



REF	Info
<u>111TP2811</u>	225 mm – left



REF	Info
<u>111TP2812</u>	225 mm – right



REF	Info
<u>111TP2813</u>	1010 mm – left



REF	Info
<u>111TP2814</u>	1010 mm – right

USED FOR DHOLLANDIA

WWW.CROVORG.PL

ROLL STOPS & PARTS

BUTÉES DE ROUES & ACCESSOIRES – ABROLLSICHERUNGEN & ERSATZTEILE



REF	Info
<u>111TP2815</u>	35 x 80 mm



REF	Info
<u>111TP2816</u>	Ø 16 x 70 mm



REF	Info
<u>111TP2817</u>	38 x 10 x NN – length on demand



REF	Info
<u>111TP2818</u>	M8 x 40 mm



REF	Info
<u>111TP2820</u>	1010 mm – left



REF	Info
<u>111TP2819</u>	1010 mm – right



REF	Info
<u>111TP2822</u>	1025 mm – left



REF	Info
<u>111TP2821</u>	1025 mm – right

USED FOR DHOLLANDIA

WWW.CROVORG.PL

MECHANICAL PARTS – PIÈCES MÉCANIQUES – MECHANISCHE ERSTATZTEILE

SPRINGS & GAS SPRINGS RESSORTS & VÉRINS À GAZ – FEDERN & GASDRUCKFEDERN



REF	Info
<u>111TP2823</u>	80 x 41 mm – Ø 4,5 mm



REF	Info
<u>111TP2824</u>	Ø 50 x 220 mm – Ø 8 mm



REF	Info
<u>111TP2825</u>	Ø 55 x 220 mm – Ø 8 mm



REF	Info
<u>111TP2826</u>	Ø 64 mm – Ø 12 mm



REF	Info
<u>111TP2827</u>	1385 mm – Ø 12 mm



REF	Info
<u>111TP2828</u>	1390 mm – Ø 13 mm



REF	Info
<u>111TP2829</u>	Ø 45 x 530 mm – Ø 10,3 mm



REF	Info
<u>111TP2830</u>	44 x 85 mm – Ø 5 mm

USED FOR DHOLLANDIA

WWW.CROVORG.PL

SPRINGS & GAS SPRINGS

RESSORTS & VÉRINS À GAZ – FEDERN & GASDRUCKFEDERN



REF	Info
<u>111TP2831</u>	Ø 48 x 250 mm – 5,5 mm – LSK/SKM



REF	Info
<u>111TP2832</u>	Ø 60 mm



REF	Info
<u>111TP2833</u>	Ø 12 x 85 mm – left



REF	Info
<u>111TP2834</u>	Ø 12 x 85 mm – right



REF	Info
<u>111TP2835</u>	Ø 11 x 77 mm – left



REF	Info
<u>111TP2836</u>	Ø 11 x 77 mm – right



REF	Info
<u>111TP2837</u>	Ø 11 x 77 mm – right



REF	Info
<u>111TP2838</u>	1500 Nw

USED FOR DHOLLANDIA

WWW.CROVORG.PL

MECHANICAL PARTS – PIÈCES MÉCANIQUES – MECHANISCHE ERSTATZTEILE

BUMPERS & BUFFERS

PARE-CHOC & BUTOIRS – STOSSDÄMPFER & -PUFFER



REF	Info
<u>111TP2839</u>	85 x 92 mm – end stop – steel



REF	Info
<u>111TP2840</u>	Ø 30 x 30 x 20 mm – M8



REF	Info
<u>111TP2841</u>	33,4 x 69 x 56 mm



REF	Info
<u>111TP2842</u>	Ø 91 mm – M8 – DH-SM



REF	Info
<u>111TP2843</u>	85 x 92 mm – end stop – steel



REF	Info
<u>111TP2844</u>	67 x 70 mm – end stop – alu



REF	Info
<u>111TP2845</u>	AL207/AL208 – end stop



REF	Info
<u>111TP2846</u>	58 x 85 mm – used for REF <u>111TP2843</u>

USED FOR DHOLLANDIA

WWW.CROVORG.PL

BUMPERS & BUFFERS

PARE-CHOCS & BUTOIRS – STOSSDÄMPFER & -PUFFER



REF	Info
<u>111TP2847</u>	SMR



REF	Info
<u>111TP2848</u>	Ø 50 x 30 mm



REF	Info
<u>111TP2849</u>	125 x 40 x 45 mm



REF	Info
<u>111TP2850</u>	200 x 48 x 35 mm



REF	Info
<u>111TP2908</u>	200 x 125/98 mm – 3 x Ø 15 mm

USED FOR DHOLLANDIA

WWW.CROVORG.PL

MECHANICAL PARTS – PIÈCES MÉCANIQUES – MECHANISCHE ERSTATZTEILE

SLIDER BLOCKS, ROLLERS & WEAR PLATES

BLOCS DE DÉFILEMENT, GALETS & PLAQUES D'USURE – GLEITBLÖCKE, LAUFROLLEN & VERSCHLEISSPLATTEN



REF	Info
<u>111TP2851</u>	148 x 85 x 26 mm



REF	Info
<u>111TP2852</u>	148 x 85 x 26 mm



REF	Info
<u>111TP2853</u>	Ø 27,7 x 30,7 x 69 mm



REF	Info
<u>111TP2854</u>	Ø 86 mm – DH-V



REF	Info
<u>111TP2855</u>	Ø 87 mm – DH-SM



REF	Info
<u>111TP2856</u>	Ø 40/85 x 27 mm

USED FOR DHOLLANDIA

WWW.CROVORG.PL

CAPS

BOUCHONS – DECKEL



REF	Info
<u>111TP2857</u>	70 x 80 mm
<u>111TP2858</u>	100 x 100 mm
<u>111TP2859</u>	120 x 120 mm
<u>111TP2860</u>	150 x 150 mm
<u>111TP2861</u>	180 x 180 mm



REF	Info
<u>111TP2864</u>	100 x 50 mm



REF	Info
<u>111TP2862</u>	100 x 100 mm – left



REF	Info
<u>111TP2863</u>	100 x 100 mm – right



REF	Info
<u>111TP2865</u>	100 x 50 mm – left



REF	Info
<u>111TP2866</u>	100 x 50 mm – right



REF	Info
<u>111TP2867</u>	100 x 80 mm



REF	Info
<u>111TP2868</u>	90 x 136 mm

USED FOR DHOLLANDIA

WWW.CROVORG.PL

CAPS

BOUCHONS – DECKEL



REF	Info
111TP2869	Ø 100 mm

PLATFORM PARTS

PIÈCES DE PLATEFORME – PLATTFORMERSATZTEILE



REF	Info
111TP2870	Ø 56 x 650 mm



REF	Info
111TP2871	680 mm



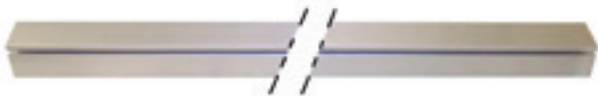
REF	Info
111TP2872	730 mm – left



REF	Info
111TP2873	730 mm – right



REF	Info
111TP2874	730 mm – left + right



REF	Info
111TP2875	100 x 100 x 2450 mm

USED FOR DHOLLANDIA

WWW.CROVORG.PL

PLATFORM PARTS

PIÈCES DE PLATEFORME – PLATTFORMERSATZTEILE



REF	Info
<u>111TP2876</u>	100 x 50 x 2000



REF	Info
<u>111TP2877</u>	52 x 57 x 1000 mm



REF	Info
<u>111TP2878</u>	1250 x 40 mm



REF	Info
<u>111TP2879</u>	1450 x 40 mm



REF	Info
<u>111TP2880</u>	50 mm – sold per metre



REF	Info
<u>111TP2881</u>	1750 mm



REF	Info
<u>111TP2882</u>	25 x 6,5 mm – sold per metre



REF	Info
<u>111TP2883</u>	Standard – LM3



REF	Info
<u>111TP2884</u>	± 245 x 270 x 80 mm – left



REF	Info
<u>111TP2885</u>	± 245 x 270 x 80 mm – right

USED FOR DHOLLANDIA

WWW.CROVORG.PL

MECHANICAL PARTS – PIÈCES MÉCANIQUES – MECHANISCHE ERSTATZTEILE

PLATFORM PARTS

PIÈCES DE PLATEFORME – PLATTFORMERSATZTEILE



REF	Info
<u>111TP2886</u>	DKC1100



REF	Info
<u>111TP2887</u>	435 mm – left



REF	Info
<u>111TP2888</u>	435 mm – right



REF	Info
<u>111TP2889</u>	Left



REF	Info
<u>111TP2890</u>	Right



REF	Info
<u>111TP2892</u>	Ø 140 mm – 166 cc – left – without hole
<u>111TP5130</u>	Ø 140 mm – 160 cc – right – without hole



REF	Info
<u>111TP2891</u>	Ø 140 mm – 160 cc – right – with hole
<u>111TP5131</u>	Ø 140 mm – 166 cc – left – with hole



REF	Info
<u>111TP2894</u>	± 653 x 172 mm – 180 cc – left – without hole



REF	Info
<u>111TP2893</u>	± 653 x 172 mm – 180 cc – right – with hole

USED FOR DHOLLANDIA

WWW.CROVORG.PL

PLATFORM PARTS

PIÈCES DE PLATEFORME – PLATTFORMERSATZTEILE



REF	Info
<u>111TP2895</u>	LM2 – left



REF	Info
<u>111TP2896</u>	LM2 – right



REF	Info
<u>111TP2897</u>	LM40 – left



REF	Info
<u>111TP2898</u>	LM40 – right



REF	Info
<u>111TP2899</u>	LM42 – left



REF	Info
<u>111TP2900</u>	LM42 – right



REF	Info
<u>111TP2901</u>	190 x 177 x 63 mm – M20 x 2,5 mm



REF	Info
<u>111TP2902</u>	Alu – with bushings



REF	Info
<u>111TP2903</u>	Ø 12 mm



REF	Info
<u>111TP2904</u>	166 x 121 mm

MECHANICAL PARTS – PIÈCES MÉCANIQUES – MECHANISCHE ERSTATZTEILE

USED FOR DHOLLANDIA

WWW.CROVORG.PL

MECHANICAL PARTS – PIÈCES MÉCANIQUES – MECHANISCHE ERSTATZTEILE

PLATFORM PARTS

PIÈCES DE PLATEFORME – PLATTFORMERSATZTEILE



REF	Info
<u>111TP2905</u>	Alu



REF	Info
<u>111TP2906</u>	2100 mm – SMR



REF	Info
<u>111TP2907</u>	Ø 27 x 2000 mm



REF	Info
<u>111TP2929</u>	1195 mm



REF	Info
<u>111TP2909</u>	Steel



REF	Info
<u>111TP2910</u>	LM20/LM50



REF	Info
<u>111TP2911</u>	LM6 – set
<u>111TP2912</u>	LM6 – left
<u>111TP2913</u>	LM6 – right



REF	Info
<u>111TP2914</u>	LM4 – set
<u>111TP2915</u>	LM4 – left
<u>111TP2916</u>	LM4 – right



REF	Info
<u>111TP2917</u>	



REF	Info
<u>111TP2918</u>	Ø 40 x 5 mm

USED FOR DHOLLANDIA

WWW.CROVORG.PL

PLATFORM PARTS

PIÈCES DE PLATEFORME – PLATTFORMERSATZTEILE



REF	Info
<u>111TP2919</u>	1500 mm – SM80



REF	Info
<u>111TP2920</u>	1900 mm – SM80



REF	Info
<u>111TP2921</u>	102 mm – male



REF	Info
<u>111TP2922</u>	102 mm – female



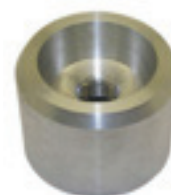
REF	Info
<u>111TP2923</u>	Sold per metre



REF	Info
<u>111TP2924</u>	55 mm – 2600 mm



REF	Info
<u>111TP2925</u>	38 x 19,7 x 3,5 mm – sold per metre



REF	Info
<u>111TP2926</u>	Ø 55 mm – M14 x 2 mm



REF	Info
<u>111TP2927</u>	DK/DKD



REF	Info
<u>111TP2928</u>	Ø 5,5 mm – 32,5 x 15 x 2 mm

USED FOR DHOLLANDIA

WWW.CROVORG.PL

MECHANICAL PARTS – PIÈCES MÉCANIQUES – MECHANISCHE ERSTATZTEILE

PLATFORM PARTS

PIÈCES DE PLATEFORME – PLATTFORMERSATZTEILE

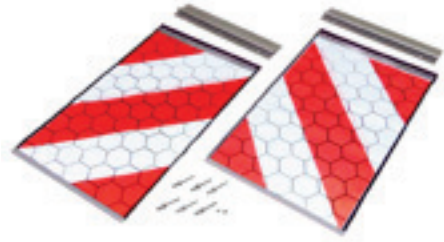


REF

Info

111TP1319

§ 53b Abs. 5 StVZO
TÜV/CE with certificate – 250 x 400 mm



REF

Info

111TP1320

§ 53b Abs. 5 StVZO
TÜV/CE without certificate – 250 x 400 mm



REF

Info

111TP2930

200 x 300 mm



REF

Info

111TP5012

400 x 300 mm

REFLECTOR TAPE

BANDE RÉFLÉCHISSANTE – REFLEKTIONS BAND



REF

Info

111TP2932

30 x 3000 mm (L + R)

USED FOR DHOLLANDIA

WWW.CROVORG.PL

PLATFORM PARTS

PIÈCES DE PLATEFORME – PLATTFORMERSATZTEILE



REF	Info
<u>111TP2934</u>	DH-SM



REF	Info
<u>111TP2935</u>	DH-SM



REF	Info
<u>111TP2936</u>	M8 x 1,25



REF	Info
<u>111TP2937</u>	Alu



REF	Info
<u>111TP2938</u>	Alu



REF	Info
<u>111TP2939</u>	Alu



REF	Info
<u>111TP2940</u>	L: 350 mm



REF	Info
<u>111TP2941</u>	DH-SM



REF	Info
<u>111TP2942</u>	SM 2004–...

USED FOR DHOLLANDIA

WWW.CROVORG.PL

MECHANICAL PARTS – PIÈCES MÉCANIQUES – MECHANISCHE ERSTATZTEILE

GREASE FITTINGS & CAPS

RACCORDS DE GRAISSAGE & BOUCHONS – SCHMIERNIPPEL & SCHUTZKAPPEN



REF	Info
<u>111TP2943</u>	M6 x 1 mm – 180°



REF	Info
<u>111TP2944</u>	M8 x 1 mm – 180°



REF	Info
<u>111TP2945</u>	M6

CONTROLLERS

COMMANDES – BEDIENUNGEN



REF	Info
<u>111TP2946</u>	± 115 x 65 mm



REF	Info
<u>111TP2947</u>	± 124 x 36 x 59 mm



REF	Info
<u>111TP2948</u>	± 155 x 35 x 70 mm



REF	Info
<u>111TP2949</u>	Housing only



REF	Info
<u>111TP2950</u>	Button switch for cooled trailer



REF	Info
<u>111TP2951</u>	With heating cable – 24 V



REF	Info
<u>111TP2952</u>	12–24 V



REF	Info
<u>111TP2953</u>	Used for REF <u>111TP2952</u>



REF	Info
<u>111TP2954</u>	12–24 V



REF	Info
<u>111TP2955</u>	Used for REF <u>111TP2954</u>

JOYSTICKS

LEVIER DE COMMANDE – JOYSTICKS



REF	Info
111TP2957	8 x NO



REF	Info
111TP2958	Ø 32,5 mm – without contacts



REF	Info
111TP2959	8 x NO



REF	Info
111TP2960	8 x NO



REF	Info
111TP2961	> 2010



REF	Info
111TP2962	Universal



REF	Info
111TP2963	> 2008

USED FOR DHOLLANDIA

WWW.CROVORG.PL

ROTARY/PUSH SWITCHES & PARTS

INTERRUPTEURS ROTATIFS/POUSOIRS & ACCESSOIRES – DREH-/DRUCKSCHALTER & ERSATZTEILE



REF	Info
<u>111TP2964</u>	O-II



REF	Info
<u>111TP2965</u>	I-O-I



REF	Info
<u>111TP2966</u>	II-O-I



REF	Info
<u>111TP2967</u>	I-O-I



REF	Info
<u>111TP2968</u>	II-O-I



REF	Info
<u>111TP2969</u>	I-O-I



REF	Info
<u>111TP2970</u>	O-I



REF	Info
<u>111TP2971</u>	II-O-I



REF	Info
<u>111TP2972</u>	I-O-I



REF	Info
<u>111TP2973</u>	II-O-I

SWITCHES & CONTROLLERS – INTERRUPTEURS & COMMANDES – SCHALTER & BEDIENUNGEN

USED FOR DHOLLANDIA

WWW.CROVORG.PL

SWITCHES & CONTROLLERS – INTERRUPTEURS & COMMANDES – SCHALTER & BEDIENTUNGEN

ROTARY/PUSH SWITCHES & PARTS

INTERRUPTEURS ROTATIFS/POUSOIRS & ACCESSOIRES – DREH-/DRUCKSCHALTER & ERSATZTEILE



REF	Info
<u>111TP2974</u>	II–O–I – 2 x NO



REF	Info
<u>111TP2975</u>	I–O–I – 4 x NO



REF	Info
<u>111TP2976</u>	TM



REF	Info
<u>111TP2977</u>	TM



REF	Info
<u>111TP2978</u>	1 x NO



REF	Info
<u>111TP2979</u>	2 x NO



REF	Info
<u>111TP2980</u>	TM



REF	Info
<u>111TP2981</u>	

USED FOR DHOLLANDIA

WWW.CROVORG.PL

FOOT CONTROLLERS & PARTS

COMMANDES AU PIED & ACCESSOIRES – FUSSSCHALTER & ERSATZTEILE



REF	Info
<u>111TP2984</u>	Ø 87,5 x 46,5 mm



REF	Info
<u>111TP5013</u>	Ø 46 x 12 mm



REF	Info
<u>111TP2986</u>	Foot control – 1993–1996 – up/down



REF	Info
<u>111TP2987</u>	Ø 29 mm



REF	Info
<u>111TP5132</u>	< 2010 – alu



REF	Info
<u>111TP2985</u>	4 x Ø 48 mm – 425 x 72 mm



REF	Info
<u>111TP2989</u>	2007–... – 465 x 75 mm



REF	Info
<u>111TP2990</u>	...–2010 – alu – 530 x 100mm

USED FOR DHOLLANDIA

WWW.CROVORG.PL

SWITCHES & CONTROLLERS – INTERRUPTEURS & COMMANDES – SCHALTER & BEDIENUNGEN

FOOT CONTROLLERS & PARTS

COMMANDES AU PIED & ACCESSOIRES – FUSSSCHALTER & ERSATZTEILE



REF	Info
<u>111TP2991</u>	100 x 450 mm



REF	Info
<u>111TP2992</u>	74 x 460 mm – 5000 mm



REF	Info
<u>111TP2993</u>	...-2010 – 38 x 37 mm



REF	Info
<u>111TP2994</u>	2 x Ø 4 mm



REF	Info
<u>111TP2995</u>	Ø 40,5/61,5 mm – M4 x 8 mm



REF	Info
<u>111TP2996</u>	24 x 34 x 61 mm



REF	Info
<u>111TP2997</u>	40 x 39 mm – 2 x Ø 4 mm



REF	Info
<u>111TP2998</u>	TM

CONTACT ELEMENTS

BLOCS DE CONTACT – KONTAKTELEMENTE



REF	Info
<u>111TP2999</u>	1 x NO



REF	Info
<u>111TP3000</u>	1 x NC



REF	Info
<u>111TP3001</u>	2 x NO



REF	Info
<u>111TP3002</u>	2 x NC



REF	Info
<u>111TP3003</u>	1 x NO – 1 x NC



REF	Info
<u>111TP3004</u>	1 x NO



REF	Info
<u>111TP3005</u>	2 x NO



REF	Info
<u>111TP3006</u>	4 x NO



REF	Info
<u>111TP3007</u>	1 x NO



REF	Info
<u>111TP3008</u>	1 x NC

CONTACT ELEMENTS

BLOCS DE CONTACT – KONTAKTELEMENTE



REF	Info
111TP3009	1 x NO



REF	Info
111TP3010	1 x NC



REF	Info
111TP3011	EAO



REF	Info
111TP3012	1 x NO



REF	Info
111TP3013	1 x NO – 1 x NC



REF	Info
111TP3014	2 x NO



REF	Info
111TP3015	3 x NO



REF	Info
111TP3016	Ø 30 mm



REF	Info
111TP3017	IP67

USED FOR DHOLLANDIA

WWW.CROVORG.PL

BATTERY/EMERGENCY SWITCHES & PARTS

COUPE BATTERIE/INTERRUPTEURS D'ARRÊT D'URGENCE & ACCESSOIRES – BATTERIE-/NOTSTOPPSCHALTER & ERSATZTEILE



REF	Info
<u>111TP3018</u>	100 A – 500 A – 5 sec



REF	Info
<u>111TP3019</u>	150 A – 1000 A – 5 sec



REF	Info
<u>111TP3020</u>	Two functions



REF	Info
<u>111TP3021</u>	Single function



REF	Info
<u>111TP3022</u>	



REF	Info
<u>111TP3023</u>	200 A



REF	Info
<u>111TP3024</u>	Two functions



REF	Info
<u>111TP3025</u>	200 A

SWITCHES & CONTROLLERS – INTERRUPTEURS & COMMANDES – SCHALTER & BEDIENUNGEN

LIMIT/MICRO SWITCHES

INTERRUPTEURS DE FIN DE COURSE/MICROINTERRUPTEURS – END-/MIKROSCHALTER



REF	Info
111TP3026	NO/NO



REF	Info
111TP3027	NO/NC



REF	Info
111TP3028	Ø 50 mm



REF	Info
111TP3029	TM



REF	Info
111TP3030	5 A – 250 V – IP67



REF	Info
111TP3031	1,5 A – 1030 mm



REF	Info
111TP2982	For 1 x REF 111TP3030



REF	Info
111TP2983	For 2 x REF 111TP3030

USED FOR DHOLLANDIA

WWW.CROVORG.PL

CONTROL BOXES & PARTS

BOÎTIERS DE CONTRÔLE & ACCESSOIRES – BEDIENKÄSTEN & ERSATZTEILE



REF	Info
<u>111TP3032</u>	Complete



REF	Info
<u>111TP3058</u>	350 x 180 x 180 mm



REF	Info
<u>111TP3033</u>	315 x 240 x 140 mm



REF	Info
<u>111TP3034</u>	PVC – 330 x 185 x 170 mm



REF	Info
<u>111TP3035</u>	310 x 154 x 130 mm



REF	Info
<u>111TP3036</u>	2002 – 308 x 170 x 157 mm



REF	Info
<u>111TP3037</u>	2002 – 301 x 145 x 147 mm



REF	Info
<u>111TP3038</u>	



REF	Info
<u>111TP3039</u>	390 x 320 x 315 mm



REF	Info
<u>111TP3040</u>	639 x 242 mm – alu

SWITCHES & CONTROLLERS – INTERRUPTEURS & COMMANDES – SCHALTER & BEDIENUNGEN

USED FOR DHOLLANDIA

WWW.CROVORG.PL

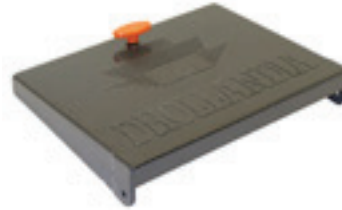
SWITCHES & CONTROLLERS – INTERRUPTEURS & COMMANDES – SCHALTER & BEDIENUNGEN

CONTROL BOXES & PARTS

BOÎTIERS DE CONTRÔLE & ACCESSOIRES – BEDIENKÄSTEN & ERSATZTEILE



REF	Info
<u>111TP3041</u>	238 x 241 mm



REF	Info
<u>111TP3042</u>	315 x 240 mm



REF	Info
<u>111TP3043</u>	± 327 mm



REF	Info
<u>111TP3044</u>	2002–...



REF	Info
<u>111TP3045</u>	2008–...



REF	Info
<u>111TP3046</u>	2002–...



REF	Info
<u>111TP3047</u>	



REF	Info
<u>111TP3048</u>	2008–...



REF	Info
<u>111TP3049</u>	...–2010



REF	Info
<u>111TP3050</u>	2002–...

CONTROL BOXES & PARTS

BOÎTIERS DE CONTRÔLE & ACCESSOIRES – BEDIENKÄSTEN & ERSATZTEILE



REF	Info
<u>111TP3051</u>	75 x 113 x 306 mm



REF	Info
<u>111TP3052</u>	Lock PVC cover – 300 mm



REF	Info
<u>111TP3053</u>	Lock complete – 1992–1995



REF	Info
<u>111TP3054</u>	101 x 18 x 10 mm – 2 x Ø 5 mm



REF	Info
<u>111TP3055</u>	Use on PVC cover – 300 mm



REF	Info
<u>111TP3056</u>	



REF	Info
<u>111TP3057</u>	2008–... – 311 x 111 mm

USED FOR DHOLLANDIA

WWW.CROVORG.PL

SPIRAL CABLES

CÂBLES SPIRALÉS – SPIRALKABEL



REF

Info

[111TP3059](#)

47 x 31 x 34 mm

FOOT CONTROLLERS & PARTS

COMMANDES AU PIED & ACCESSOIRES – FUSSSCHALTER & ERSATZTEILE



REF

Info

[111TP3060](#)

250 V – 5 A – IP66 – 500 mm



REF

Info

[111TP3061](#)

250 V – 4 A – 500 mm



REF

Info

[111TP3062](#)

TM 2008–...



REF

Info

[111TP3063](#)

TM 2008–... – set

ATLAS CONTROLLERS

COMMANDES ATLAS – ATLAS BEDIENUNGEN



REF	Info
<u>111TP3064</u>	Extreme specific – 2 buttons 12–24 V – 5 A – IP67 – IK09



REF	Info
<u>111TP3179</u>	Extreme specific – 3 buttons 12–24 V – 5 A – IP67 – IK09



REF	Info
<u>111TP3066</u>	Evolution – 2 buttons 12–24 V – IP67 – IK09



REF	Info
<u>111TP3067</u>	Evolution – 3 buttons 12–24 V – IP67 – IK09



REF	Info
<u>111TP3068</u>	Extreme universal – 2 buttons 12–24 V – 500 mA – IP67 – IK09 programmable



REF	Info
<u>111TP3178</u>	Extreme universal – 3 buttons 12–24 V – 500 mA – IP67 – IK09 programmable

See also chapter 15 – Accessories for more Atlas controllers.

USED FOR DHOLLANDIA

WWW.CROVORG.PL

SWITCHES & CONTROLLERS – INTERRUPTEURS & COMMANDES – SCHALTER & BEDIENUNGEN

VARIOUS CONTROLLER PARTS

DIVERSES PIÈCES DE COMMANDE – WEITERE BEDIENUNG-ERSATZTEILE



REF	Info
<u>111TP3069</u>	125 x 80 x 60 mm



REF	Info
<u>111TP3072</u>	53 x 52 x 129 mm



REF	Info
<u>111TP3071</u>	



REF	Info
<u>111TP3070</u>	40 x 30 x 10,8 mm



REF	Info
<u>111TP3073</u>	Ø 28/32 mm – 16 mm



REF	Info
<u>111TP3074</u>	Ø 18 x 14 mm



REF	Info
<u>111TP3075</u>	250 V – 5 A – IP66 – 500 mm



REF	Info
<u>111TP3076</u>	Ø 30 mm



REF	Info
<u>111TP3078</u>	50 mm

USED FOR DHOLLANDIA

WWW.CROVORG.PL

BATTERY CABLES

CÂBLES DE BATTERIE – BATTERIEKABEL



REF	Info
<u>111TP3079</u>	25 mm ²



REF	Info
<u>111TP3080</u>	Ø 35 mm ² – sold per metre
<u>111TP3081</u>	Ø 35 mm ² – 9 metre
<u>111TP3082</u>	Ø 35 mm ² – 18 metre
<u>111TP1054</u>	Ø 35 mm ² – 25 metre



REF	Info
<u>111TP3083</u>	Ø 50 mm ² – sold per metre
<u>111TP1055</u>	Ø 50 mm ² – 25 metre

KOSTAL CABLES

CÂBLES KOSTAL – KOSTALKABEL



REF	Info
<u>111TP5133</u>	M24–M27 – 4000 mm



REF	Info
<u>111TP3087</u>	M24 x 1 mm

SPIRAL CABLES

CÂBLES SPIRALÉS – SPIRALKABEL



REF	Info
111TP3088	2500 mm – 5 x 0,75 mm – Ø 15/29 mm



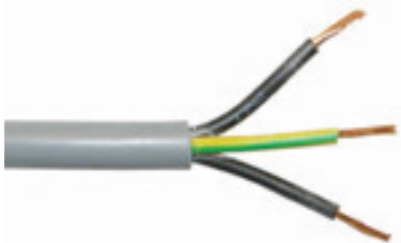
REF	Info
111TP3089	4500 mm – 4 x 0,75 mm – Ø 14/25 mm



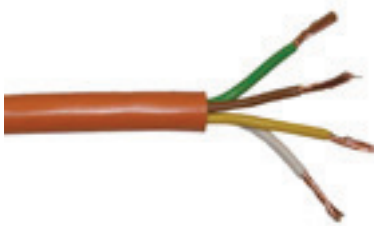
REF	Info
111TP3090	2500 mm – 7 x 0,75 mm – Ø 15/30 mm

CABLES & PARTS

CÂBLES DE BATTERIE – KABEL & ERSATZTEILE



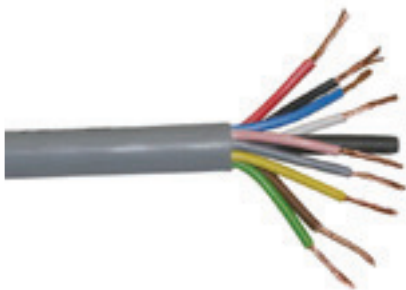
REF	Info
<u>111TP3091</u>	3 x 1 mm ² – sold per metre



REF	Info
<u>111TP3092</u>	4 x 1 mm ² – sold per metre



REF	Info
<u>111TP3093</u>	5 x 1 mm ² – sold per metre



REF	Info
<u>111TP3094</u>	9 x 1 mm ² – sold per metre



REF	Info
<u>111TP5014</u>	Heating wire for REF <u>111TP2951</u> – 12 V
<u>111TP3095</u>	Heating cable for REF <u>111TP2951</u> – 24 V – 3,51 W

CONNECTORS & PARTS

CONNECTEURS & ACCESSOIRES – STECKER & ERSATZTEILE



REF	Info
<u>111TP3097</u>	35 mm ² – 160 A – SBE160



REF	Info
<u>111TP3098</u>	50 mm ² – 175 A – SB175



REF	Info
<u>111TP3099</u>	70 mm ² – 350 A – SBX350



REF	Info
<u>111TP3100</u>	250 A



REF	Info
<u>111TP3101</u>	250 A



REF	Info
<u>111TP3102</u>	220 V – 400 mm



REF	Info
<u>111TP3103</u>	220 V



REF	Info
<u>111TP3104</u>	7 pole – DIN 72577 – ISO 1724



REF	Info
<u>111TP3105</u>	7 pole – DIN 72577 – ISO 1724



REF	Info
<u>111TP3106</u>	Hirschmann (GSA)

FLASHLIGHTS & PARTS

LAMPES TORCHES & ACCESSOIRES – BLINKLEUCHTEN & ERSATZTEILE



REF	Info
111TP3107	12–24 V – LED



REF	Info
111TP3108	Ø 64 x 42 mm



REF	Info
111TP1503	20° – IP68



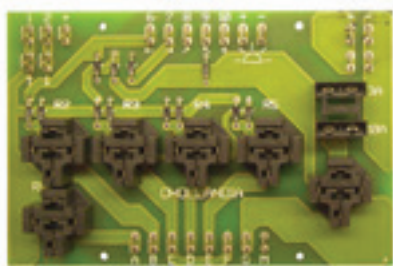
REF	Info
111TP1504	Used for REF 111TP1503



REF	Info
111TP3109	120 x 45 mm – DHV

CIRCUIT BOARDS/CONTROLLERS

CIRCUITS IMPRIMÉS/COMMANDES – LEITERPLATTEN/BEDIENUNGEN



REF	Info
<u>111TP3110</u>	1992–...



REF	Info
<u>111TP3111</u>	1992–...



REF	Info
<u>111TP3112</u>	Used for E122



REF	Info
<u>111TP3113</u>	Complete DH-SM

CABLE SHOES & BATTERY CLAMPS

CONNECTEURS & PINCES DE BATTERIE – KABELSCHUHE & BATTERIEKLAMMERN



REF	Info
<u>111TP3121</u>	Ø 17,5 mm (+)



REF	Info
<u>111TP3122</u>	Ø 15,7 mm (-)

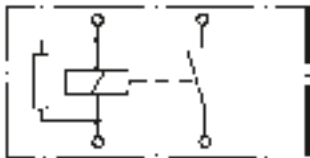


REF	Info
<u>111TP3123</u>	Ø 06 mm – 25 mm ²
<u>111TP3124</u>	Ø 10 mm – 35 mm ²
<u>111TP3125</u>	Ø 10 mm – 50 mm ²

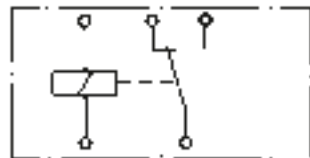


REF	Info
<u>111TP3096</u>	4500 mm

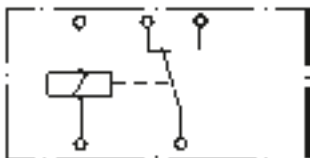
RELAIS
RELAIS – RELAIS



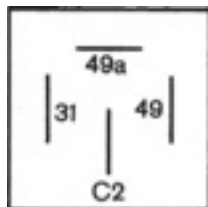
REF	Info
<u>111TP3114</u>	12 V – 30 A



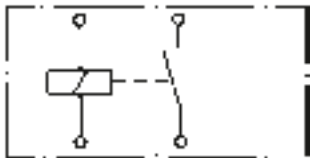
REF	Info
<u>111TP3115</u>	12 V – 30 A



REF	Info
<u>111TP3116</u>	24 V – 30 A



REF	Info
<u>111TP3117</u>	12 V – 170 W max
<u>111TP3118</u>	24 V – 170 W max



REF	Info
<u>111TP3119</u>	24 V – 22 A

FUSES

FUSIBLES – SICHERUNGEN



REF	Info
<u>111TP3126</u>	75 A – DIN 72581/5
<u>111TP3127</u>	100 A – DIN 72581/5
<u>111TP3128</u>	200 A – DIN 72581/5
<u>111TP3129</u>	300 A – DIN 72581/5



REF	Info
<u>111TP3130</u>	100 A
<u>111TP3131</u>	200 A
<u>111TP3132</u>	300 A



REF	Info
<u>111TP3133</u>	100 A – mega



REF	Info
<u>111TP3134</u>	250 A – mega



REF	Info
<u>111TP3135</u>	250 A – DIN 43560/1



REF	Info
<u>111TP3136</u>	3 A – DIN 72581/med – 19 x 20 mm



REF	Info
<u>111TP3137</u>	15 A – DIN 72581/med – 19 x 20 mm



REF	Info
<u>111TP3138</u>	30 A – DIN 72581/med – 19 x 20 mm



REF	Info
<u>111TP3139</u>	80 A – DIN 72581/2

FUSE HOLDERS & PARTS

PORTE-FUSIBLES & ACCESSOIRES – SICHERUNGSHALTER & ERSATZTEILE



REF	Info
111TP3140	DIN 72581/med



REF	Info
111TP3141	DIN 43560/1 – mega – CNN/ANN



REF	Info
111TP3142	DIN 72581/med



REF	Info
111TP3143	DIN 72581/med



REF	Info
111TP3144	Mega



REF	Info
111TP3145	M10



REF	Info
111TP3146	M8



REF	Info
111TP3147	19 x 32,5 x 17 mm

USED FOR DHOLLANDIA

WWW.CROVORG.PL

THYRISTORS & DIODES

THYRISTORS & DIODES – THYRISTOREN & DIODEN



REF	Info
<u>111TP3148</u>	70 A – ± 120 x 100 x 64 mm



REF	Info
<u>111TP3149</u>	1000 V – 3 A

VARIOUS ELECTRICAL PARTS

DIVERSES PIÈCES ÉLECTRIQUES – WEITERE ELEKTRISCHE ERSATZTEILE



REF	Info
<u>111TP3150</u>	Ø 12 mm
<u>111TP3151</u>	Ø 18 mm
<u>111TP3152</u>	Ø 21 mm



REF	Info
<u>111TP3153</u>	M20 x 1,5 mm
<u>111TP3154</u>	M25 x 1,5 mm



REF	Info
<u>111TP3155</u>	PG11
<u>111TP3156</u>	PG13.5



REF	Info
<u>111TP3157</u>	35 mm



REF	Info
<u>111TP3158</u>	30 mm



REF	Info
<u>111TP3159</u>	17,7 x 17,7 mm

USED FOR DHOLLANDIA

WWW.CROVORG.PL

VARIOUS ELECTRICAL PARTS

DIVERSES PIÈCES ÉLECTRIQUES – WEITERE ELEKTRISCHE ERSATZTEILE



REF	Info
<u>111TP3160</u>	8 pole



REF	Info
<u>111TP3161</u>	10 pole



REF	Info
<u>111TP3162</u>	± 110 x 75 mm



REF	Info
<u>111TP3163</u>	121 x 91 x 57 mm



REF	Info
<u>111TP3164</u>	Female



REF	Info
<u>111TP3165</u>	5 A



REF	Info
<u>111TP3166</u>	12 x 7,5 mm – Ø 1,5 mm

ELECTRICAL PARTS – PIÈCES ÉLECTRIQUES – ELEKTRISCHE ERSATZTEILE

USED FOR DHOLLANDIA

WWW.CROVORG.PL

BATTERY COVERS/HOUSINGS

COUVERCLES/LOGEMENTS BATTERIE – BATTERIEKÄSTEN/-DECKEL



REF

Info

111TP3167

580/500 – 260/75 mm



REF

Info

111TP3168

...–1992

DECALS

AUTOCOLLANTS – AUFKLEBER



REF

Info

111TP3169

NL



REF

Info

111TP3170

300 mm



REF

Info

111TP3171

2002



REF

Info

111TP3172

2002



REF

Info

111TP3173

2002



REF

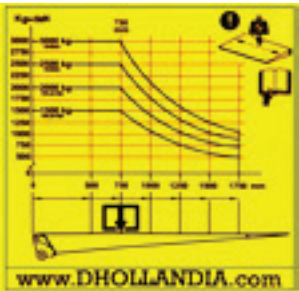
Info

111TP3174

CE 2002

DECALS

AUTOCOLLANTS – AUFKLEBER



REF	Info
<u>111TP3175</u>	72 x 69 mm

REF	Info
<u>111TP3176</u>	1500–3000



REF	Info
<u>111TP3177</u>	301 x 139 mm

USED FOR DHOLLANDIA

WWW.CROVORG.PL

NOTES – NOTIZ

Handwriting practice lines consisting of 25 horizontal dotted lines.