



3

USED FOR  
BÄR CARGOLIFT

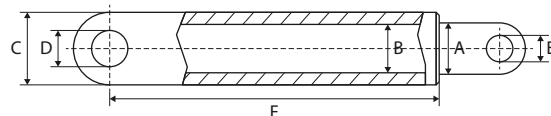
# USED FOR BÄR CARGOLIFT

WWW.CROVORG.PL

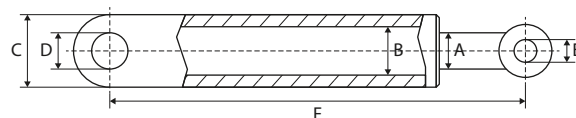
CYLINDERS – VÉRINS/CYLINDRES – ZYLINDER

## LIFT CYLINDERS

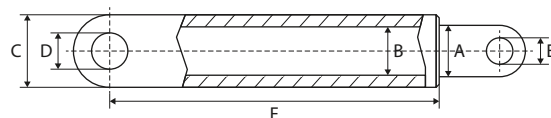
VÉRINS DE LEVAGE – HUBZYLINDER



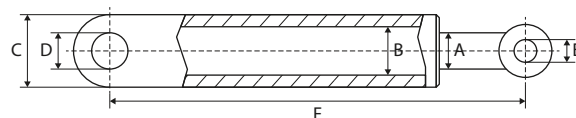
REF	A	B	C	D	E	F	Info
<b><u>111TP1514</u></b>	50 mm		65 mm	30 mm	30 mm	440 mm	BC1000



REF	A	B	C	D	E	F	Info
<b><u>111TP1515</u></b>	60 mm		80 mm	30 mm	30 mm	460 mm	SX1 – 750/751



REF	A	B	C	D	E	F	Info
<b><u>111TP1516</u></b>	60 mm		75 mm	35 mm	35 mm	540 mm	BC 1500



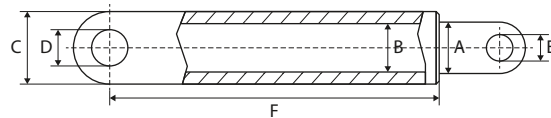
REF	A	B	C	D	E	F	Info
<b><u>111TP1518</u></b>	85 mm		102 mm	40 mm	40 mm	540 mm	

# USED FOR BÄR CARGOLIFT

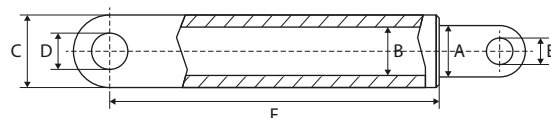
WWW.CROVORG.PL

## LIFT CYLINDERS

VÉRINS DE LEVAGE – HUBZYLINDER



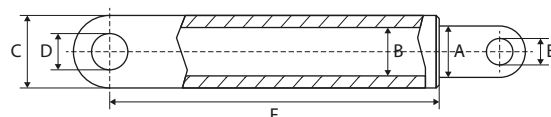
REF	A	B	C	D	E	F	Info
<a href="#"><u>111TP1518</u></a>	85 mm		102 mm	40 mm	40 mm	540 mm	



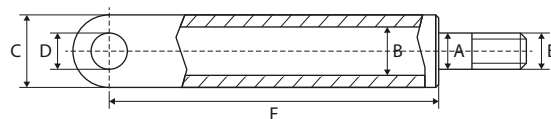
REF	A	B	C	D	E	F	Info
<a href="#"><u>111TP1519</u></a>	70 mm		85 mm	35 mm	35 mm	543 mm	BC 2000

## TILT CYLINDERS

VÉRIN D'INCLINAISON – SCHLIESSZYLINDER



REF	A	B	C	D	E	F	Info
<a href="#"><u>111TP1520</u></a>	70 mm		85 mm	35 mm	35 mm	500 mm	BC 2000



REF	A	B	C	D	E	F	Info
<a href="#"><u>111TP1521</u></a>	36 mm	50 mm	60 mm	30 mm	M33 x 1,5 mm	357 mm	BC1000

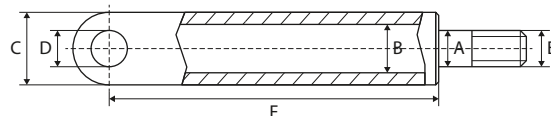
# USED FOR BÄR CARGOLIFT

WWW.CROVORG.PL

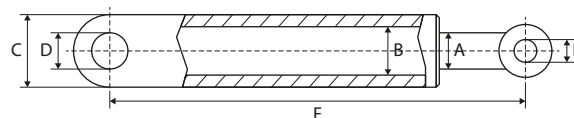
CYLINDERS – VÉRINS/CYLINDRES – ZYLINDER

## TILT CYLINDERS

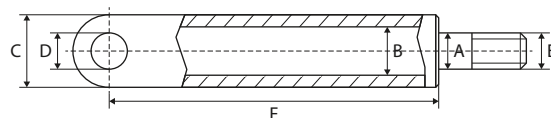
VÉRIN D'INCLINAISON – SCHLIESSZYLINDER



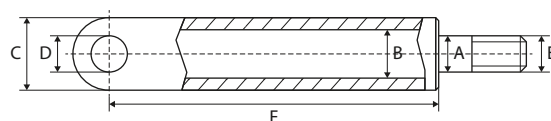
REF	A	B	C	D	E	F	Info
<b><u>111TP1522</u></b>	40 mm	60 mm	70 mm	35 mm	M38 x 2 mm	372 mm	BC 1500



REF	A	B	C	D	E	F	Info
<b><u>111TP1523</u></b>	45 mm	80 mm	90 mm	35 mm	35 mm	640 mm	



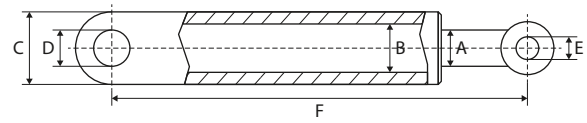
REF	A	B	C	D	E	F	Info
<b><u>111TP1524</u></b>	50 mm	70 mm	82 mm	35 mm	M48 x 2 mm	420 mm	BC 2000



REF	A	B	C	D	E	F	Info
<b><u>111TP1525</u></b>	50 mm	70 mm	82 mm	35 mm	M48 x 2 mm	470 mm	

## FOLD CYLINDERS

VÉRINS DE REPLIAGE – FALTZYLINDER



REF	A	B	C	D	E	F	Info
<a href="#"><u>111TP1526</u></a>	32 mm		45 mm	25 mm	17 mm	319 mm	

# USED FOR BÄR CARGOLIFT

WWW.CROVORG.PL

CYLINDER PARTS – PIÈCES DE CYLINDRE – ZYLINDER-ERSATZTEILE

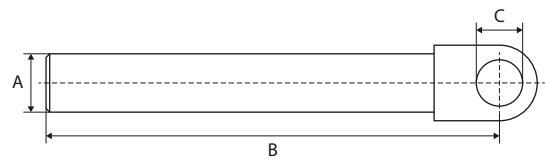
## PISTON RODS

TIGES DE PISTON – KOLBENSTANGEN



REF	Ø	Info
<a href="#">111TP1527</a>	36/50 mm	Used for cylinder: REF <a href="#">111TP1521</a>
<a href="#">111TP1528</a>	40/60 mm	Used for cylinder: REF <a href="#">111TP1522</a>
<a href="#">111TP1529</a>	50/70 mm	Used for cylinder: REF <a href="#">111TP1524</a>

REF	Ø	Info
<a href="#">111TP1530</a>	60 mm	Used for cylinder: REF <a href="#">111TP1515</a>
<a href="#">111TP1531</a>	70 mm	Used for cylinder: REF <a href="#">111TP1517</a>

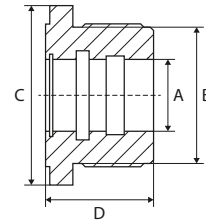


REF	A	B	C	Info
<a href="#">111TP1532</a>	50 mm	385 mm	30 mm	Used for cylinder: REF <a href="#">111TP1514</a>
<a href="#">111TP1533</a>	60 mm	495 mm	35 mm	Used for cylinder: REF <a href="#">111TP1516</a>
<a href="#">111TP1534</a>	60 mm	540 mm	30 mm	
<a href="#">111TP1535</a>	70 mm	500 mm	35 mm	Cylinder used for REF <a href="#">111TP1519</a>

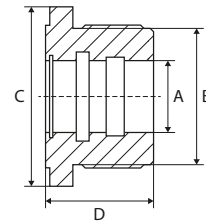
# USED FOR BÄR CARGOLIFT

WWW.CROVORG.PL

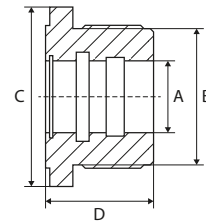
## CYLINDER HEADS CULASSES – ZYLINDERKÖPFE



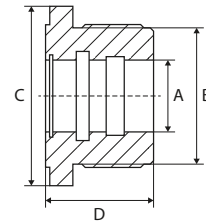
REF	A	B	C	D	Info
<a href="#"><u>111TP1536</u></a>	36 mm	50 mm	58 mm	46 mm	Used for cylinder: REF <a href="#"><u>111TP1521</u></a>



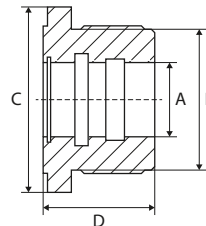
REF	A	B	C	D	Info
<a href="#"><u>111TP1537</u></a>	40 mm	60 mm	60 mm	42 mm	Used for cylinder: REF <a href="#"><u>111TP1522</u></a>



REF	A	B	C	D	Info
<a href="#"><u>111TP1538</u></a>	40 mm	70 mm	80 mm	45 mm	



REF	A	B	C	D	Info
<a href="#"><u>111TP1539</u></a>	45 mm	80 mm	90 mm	63 mm	Used for cylinder: REF <a href="#"><u>111TP1523</u></a>



REF	A	B	C	D	Info
<a href="#"><u>111TP1540</u></a>	50 mm	70 mm	70 mm	42 mm	Used for cylinder: REF <a href="#"><u>111TP1524</u></a>

# USED FOR BÄR CARGOLIFT

WWW.CROVORG.PL

CYLINDER PARTS – PIÈCES DE CYLINDRE – ZYLINDER-ERSATZTEILE

## SEAL KITS

KITS DE JOINTS – DICHTUNGSSÄTZE



REF	Info
<a href="#"><u>111TP1541</u></a>	Ø 32/40 mm



REF	Info
<a href="#"><u>111TP1542</u></a>	Ø 36/50 mm



REF	Info
<a href="#"><u>111TP1543</u></a>	Ø 40/60 mm



REF	Info
<a href="#"><u>111TP1544</u></a>	Ø 40/70 mm



REF	Info
<a href="#"><u>111TP1545</u></a>	Ø 45/80 mm



REF	Info
<a href="#"><u>111TP1546</u></a>	Ø 49,5/60 mm



REF	Info
<a href="#"><u>111TP1547</u></a>	Ø 50/60 mm



REF	Info
<a href="#"><u>111TP1548</u></a>	Ø 50/70 mm



REF	Info
<a href="#"><u>111TP1549</u></a>	Ø 50/70 mm



REF	Info
<a href="#"><u>111TP1550</u></a>	Ø 50/80 mm



# USED FOR BÄR CARGOLIFT

WWW.CROVORG.PL

## SEAL KITS

KITS DE JOINTS – DICHTUNGSSÄTZE



REF	Info
<a href="#"><u>111TP1551</u></a>	Ø 50/90 mm



REF	Info
<a href="#"><u>111TP1552</u></a>	Ø 60/70 mm



REF	Info
<a href="#"><u>111TP1553</u></a>	Ø 60/70 mm



REF	Info
<a href="#"><u>111TP1554</u></a>	Ø 70/80 mm



REF	Info
<a href="#"><u>111TP1555</u></a>	Ø 70/80 mm



REF	Info
<a href="#"><u>111TP1556</u></a>	Ø 70/80 mm



REF	Info
<a href="#"><u>111TP1557</u></a>	Ø 80/45 mm



REF	Info
<a href="#"><u>111TP1558</u></a>	Ø 85/95 mm

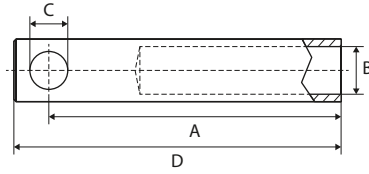
CYLINDER PARTS – PIÈCES DE CYLINDRE – ZYLINDER-ERSATZTEILE

# USED FOR BÄR CARGOLIFT

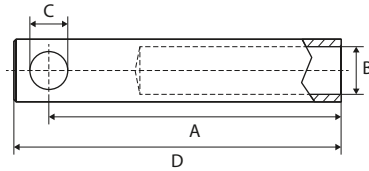
WWW.CROVORG.PL

CYLINDER PARTS – PIÈCES DE CYLINDRE – ZYLINDER-ERSATZTEILE

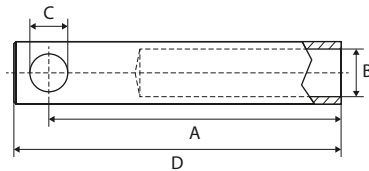
## EXTENSIONS RALLONGES – VERLÄNGERUNG



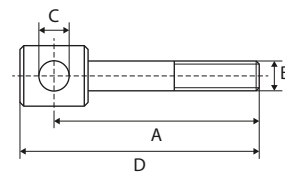
REF	A	B	C	D	Info
<a href="#"><u>111TP1559</u></a>	320 mm	M38	35 mm	356 mm	AL800/BC1500



REF	A	B	C	D	Info
<a href="#"><u>111TP1560</u></a>	420 mm	M38	35 mm	456 mm	AL900/BC1500



REF	A	B	C	D	Info
<a href="#"><u>111TP1561</u></a>	520 mm	M38	35 mm	555 mm	AL1000/BC1500



REF	A	B	C	D	Info
<a href="#"><u>111TP1562</u></a>	70 mm	M16	17 mm	92 mm	GE17

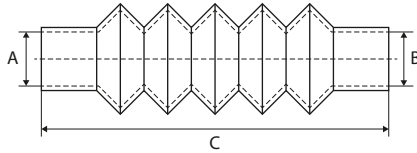
# USED FOR BÄR CARGOLIFT

WWW.CROVORG.PL

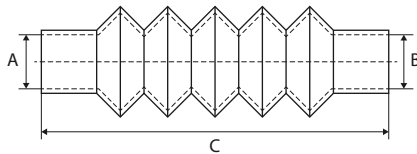
## DUST COVERS

CACHE-POUSSIÈRE – STAUBKAPPE

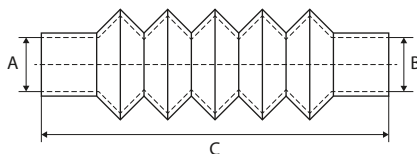
CYLINDER PARTS – PIÈCES DE CYLINDRE – ZYLINDER-ERSATZTEILE



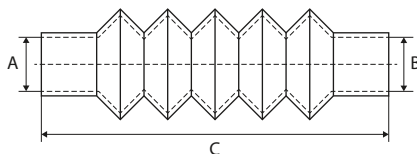
REF	Ø A/B	Min–C–Max	#1	#2
<a href="#"><u>111TP1563</u></a>	50/70 mm	120–310–500 mm	<a href="#"><u>111TP4916</u></a>	<a href="#"><u>111TP4918</u></a>



REF	Ø A/B	Min–C–Max	#1	#2
<a href="#"><u>111TP1565</u></a>	60/110 mm	230–380–430 mm	<a href="#"><u>111TP5004</u></a>	<a href="#"><u>111TP4924</u></a>



REF	Ø A/B	Min–C–Max	#1	#2
<a href="#"><u>111TP1566</u></a>	60/80 mm	190–440–640 mm	<a href="#"><u>111TP5004</u></a>	<a href="#"><u>111TP5005</u></a>



REF	Ø A/B	Min–C–Max	#1	#2
<a href="#"><u>111TP1567</u></a>	70/70 mm	110–250–450 mm	<a href="#"><u>111TP5005</u></a>	<a href="#"><u>111TP5005</u></a>

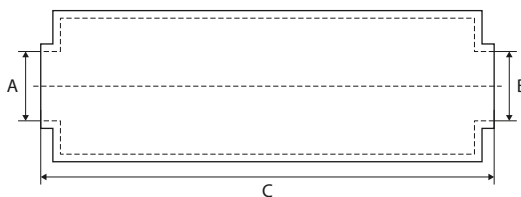
# USED FOR BÄR CARGOLIFT

WWW.CROVORG.PL

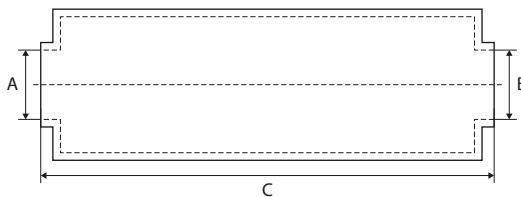
CYLINDER PARTS – PIÈCES DE CYLINDRE – ZYLINDER-ERSATZTEILE

## PROTECTION COVERS

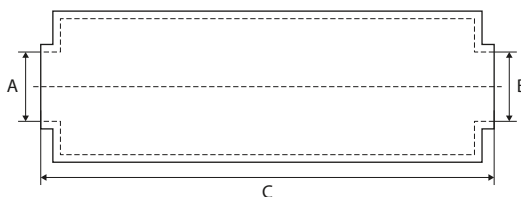
HOUSES DE PROTECTION – SCHUTZROHRE



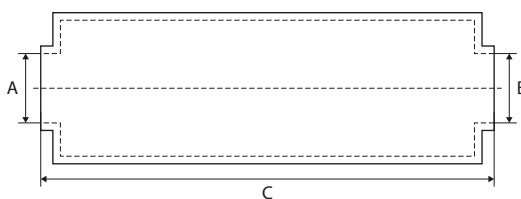
REF	Ø A/B	C	#1
<a href="#">111TP1568</a>	57/80 mm	320 mm	<a href="#">111TP5004</a>



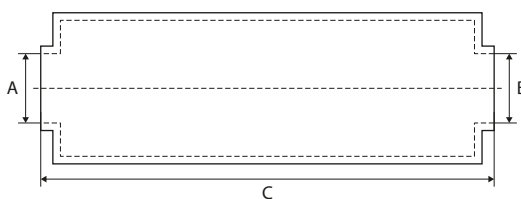
REF	Ø A/B	C	#1
<a href="#">111TP1569</a>	57/85 mm	180 mm	<a href="#">111TP5004</a>



REF	Ø A/B	C	#1
<a href="#">111TP1571</a>	84/112 mm	300 mm	<a href="#">111TP4999</a>



REF	Ø A/B	C	#1
<a href="#">111TP1572</a>	65/105 mm	340 mm	<a href="#">111TP5004</a>



REF	Ø A/B	C	#1
<a href="#">111TP1573</a>	85/100 mm	300 mm	<a href="#">111TP5005</a>

# USED FOR BÄR CARGOLIFT

WWW.CROVORG.PL

## SEALS

JOINTS – DICHTUNGEN



REF	Info	REF	Info
<a href="#"><u>111TP1574</u></a>	Ø M10 – 10,7 x 16,08 x 1,5 mm	<a href="#"><u>111TP1575</u></a>	Ø 4,5 mm – 1005 mm

## O-RINGS

JOINTS TORIQUES – O-RINGE

REF	Info
<a href="#"><u>111TP1576</u></a>	Ø 9,25 x 1,78 mm
<a href="#"><u>111TP1577</u></a>	Ø 17 x 2 mm
<a href="#"><u>111TP1578</u></a>	Ø 17,3 x 2,4 mm
<a href="#"><u>111TP1579</u></a>	Ø 26 x 2 mm
<a href="#"><u>111TP1580</u></a>	Ø 28 x 2 mm
<a href="#"><u>111TP1581</u></a>	Ø 29,87 x 1,78 mm
<a href="#"><u>111TP1582</u></a>	Ø 30 x 3,5 mm
<a href="#"><u>111TP1583</u></a>	Ø 33 x 3,5 mm
<a href="#"><u>111TP1584</u></a>	Ø 34 x 3 mm
<a href="#"><u>111TP1585</u></a>	Ø 40 x 1,5 mm
<a href="#"><u>111TP1586</u></a>	Ø 40 x 2 mm
<a href="#"><u>111TP1587</u></a>	Ø 40,65 x 5,33 mm
<a href="#"><u>111TP1588</u></a>	Ø 47 x 5,33 mm
<a href="#"><u>111TP1589</u></a>	Ø 60 x 3 mm
<a href="#"><u>111TP1590</u></a>	Ø 63 x 3,5 mm
<a href="#"><u>111TP1591</u></a>	Ø 101,19 x 3,53 mm
<a href="#"><u>111TP1592</u></a>	Ø 247 x 2 mm



## QUAD RINGS

JOINTS QUADRILOBES – QUAD-RINGE

REF	Info
<a href="#"><u>111TP1593</u></a>	Ø 29,51 x 5,33 mm
<a href="#"><u>111TP1594</u></a>	Ø 29,82 x 2,62 mm
<a href="#"><u>111TP1595</u></a>	Ø 34,25 x 5,33 mm
<a href="#"><u>111TP1596</u></a>	Ø 34,59 x 2,62 mm



## USED FOR BÄR CARGOLIFT

WWW.CROVORG.PL

## COVERS

COUVERCLES – ABDECKUNGEN



REF	Info
<a href="#"><u>111TP1597</u></a>	315 x 260 x 140 mm

## TANKS &amp; OIL RESERVOIRS

RÉSERVOIRS (D'HUILE) – TANKS &amp; ÖLBEHÄLTER



REF	Info
<a href="#"><u>111TP1598</u></a>	245 x 150 x 147 mm



REF	Info
<a href="#"><u>111TP1599</u></a>	Ø 85 mm – L: 305 mm – 2,5 liter



REF	Info
<a href="#"><u>111TP1600</u></a>	Ø 110 mm – L: 325 mm



REF	Info
<a href="#"><u>111TP1601</u></a>	Ø 110 mm – L: 560 mm – 5,4 liter



REF	Info
<a href="#"><u>111TP1602</u></a>	6,6 liter



REF	Info
<a href="#"><u>111TP1603</u></a>	Ø 110 mm – L: 895 mm – 8,9 liter



REF	Info
<a href="#"><u>111TP1604</u></a>	Ø 120 mm – L: 570 mm – 5,5 liter

# USED FOR BÄR CARGOLIFT

WWW.CROVORG.PL

## FILTERS & BREATHERS

FILTRES & RENIFLARDS – FILTER & ENTLÜFTER



REF	Info
<a href="#"><u>111TP1605</u></a>	Ø 63 mm



REF	Info
<a href="#"><u>111TP1606</u></a>	Ø 37 x 43 mm



REF	Info
<a href="#"><u>111TP1607</u></a>	3/4"

## DRAIN PLUGS

BOUCHONS DE VIDANGE – ABLASSSCHRAUBEN



REF	Info
<a href="#"><u>111TP1608</u></a>	3/8"

## VALVE BLOCKS

BOÎTIERS À SOUPAPES – VENTILBLÖCKE



REF	Info
<a href="#"><u>111TP1609</u></a>	HE1000



REF	Info
<a href="#"><u>111TP1610</u></a>	HE1000

# USED FOR BÄR CARGOLIFT

WWW.CROVORG.PL

MOTORS, PUMPS & PARTS – MOTEURS, POMPES & ACCESSOIRES – MOTOREN, PUMPEN & ERSATZTEILE

## ELECTRIC MOTORS

MOTEURS ÉLECTRIQUES – ELEKTROMOTOREN



REF	Volt	kW	Rotation
<a href="#"><u>111TP1611</u></a>	12 V	0,8 kW	<< CCW
<a href="#"><u>111TP1613</u></a>	24 V	1,2 kW	<< CCW

REF	Volt	kW	Rotation
<a href="#"><u>111TP1612</u></a>	12 V	2 kW	<< CCW
<a href="#"><u>111TP1614</u></a>	24 V	2 kW	<< CCW



REF	Volt	kW	Rotation
<a href="#"><u>111TP1615</u></a>	24 V	2,2 kW	CW >>

REF	Volt	kW	Rotation
<a href="#"><u>111TP1616</u></a>	24 V	2 kW	CW >>



REF	Volt	kW	Rotation
<a href="#"><u>111TP1617</u></a>	24 V	2,2 kW	CW >>

REF	Volt	kW	Rotation
<a href="#"><u>111TP1618</u></a>	24 V	3 kW	CW >>



REF	Volt	kW	Rotation
<a href="#"><u>111TP1619</u></a>	12 V	2 kW	<< CCW
<a href="#"><u>111TP1621</u></a>	24 V	2 kW	<< CCW

REF	Volt	kW	Rotation
<a href="#"><u>111TP1620</u></a>	24 V	2 kW	CW >>



# USED FOR BÄR CARGOLIFT

WWW.CROVORG.PL

## HYDRAULIC PUMPS

POMPES HYDRAULIQUES – HYDRAULIKPUMPEN



REF	CC	Rotation	Info
<a href="#"><u>111TP1622</u></a>	1,2 cc	CW >>	
<a href="#"><u>111TP1623</u></a>	2 cc	CW >>	
<a href="#"><u>111TP1624</u></a>	2,5 cc	CW >>	
<a href="#"><u>111TP1625</u></a>	3,2 cc	CW >>	

REF	CC	Rotation	Info
<a href="#"><u>111TP1626</u></a>	1,2 cc	<< CCW	W3B1/L-TYP
<a href="#"><u>111TP1627</u></a>	2 cc	<< CCW	W3B1/L-TYP
<a href="#"><u>111TP1628</u></a>	2,5 cc	<< CCW	W3B1/L-TYP



REF	CC	Rotation	Info
<a href="#"><u>111TP1629</u></a>	1,2 cc	CW >>	W3B1/R-TYP
<a href="#"><u>111TP1630</u></a>	2 cc	CW >>	W3B1/R-TYP
<a href="#"><u>111TP1631</u></a>	2,5 cc	CW >>	W3B1/R-TYP

REF	CC	Rotation	Info
<a href="#"><u>111TP1632</u></a>	0,8 cc	CW >>	HE1000-TYP
<a href="#"><u>111TP1633</u></a>	1 cc	CW >>	HE1000-TYP



REF	CC	Rotation	Info
<a href="#"><u>111TP1634</u></a>	3 cc	<< CCW	

REF	CC	Rotation	Info
<a href="#"><u>111TP1635</u></a>	2 cc	<< CCW	

# USED FOR BÄR CARGOLIFT

WWW.CROVORG.PL

MOTORS, PUMPS & PARTS – MOTEURS, POMPES & ACCESSOIRES – MOTOREN, PUMPEN & ERSATZTEILE

## HYDRAULIC PUMPS

POMPES HYDRAULIQUES – HYDRAULIKPUMPEN



REF	CC	Rotation	Info
<a href="#"><u>111TP1636</u></a>	2 cc	<< CCW	

REF	CC	Rotation	Info
<a href="#"><u>111TP1637</u></a>	1,2 cc	<< CCW	



REF	CC	Rotation	Info
<a href="#"><u>111TP1638</u></a>	1,2 cc		

# USED FOR BÄR CARGOLIFT

WWW.CROVORG.PL

## SOLENOID SWITCHES/CONTACTORS

SOLÉNOÏDES/CONTACTEURS – MAGNETSCHALTER/SCHÜTZE



REF	Volt	Amp	Info
<a href="#"><u>111TP1639</u></a>	12 V	100 A	
<a href="#"><u>111TP1640</u></a>	24 V	100 A	



REF	Volt	Amp	Info
<a href="#"><u>111TP1641</u></a>	12 V	100 A	
<a href="#"><u>111TP1642</u></a>	24 V	100 A	



REF	Volt	Amp	Info
<a href="#"><u>111TP1643</u></a>	12 V	150 A	
<a href="#"><u>111TP1644</u></a>	24 V	150 A	



REF	Volt	Amp	Info
<a href="#"><u>111TP1645</u></a>	12 V	150 A	Bosch
<a href="#"><u>111TP1646</u></a>	24 V	150 A	Bosch

## COUPLERS

COUPLEURS – KUPPLUNGEN



REF	Info
<a href="#"><u>111TP1647</u></a>	Ø 20 x 12 mm



REF	Info
<a href="#"><u>111TP1648</u></a>	Ø 14 x 13 mm



REF	Info
<a href="#"><u>111TP1649</u></a>	Ø 15 x 37 mm

# USED FOR BÄR CARGOLIFT

WWW.CROVORG.PL

## BRUSHES

BALAIS – KOHLEBÜRSTEN



REF	Info
<a href="#"><u>111TP1650</u></a>	12,5 x 7,3 x 19,2 mm – 12 V
<a href="#"><u>111TP1651</u></a>	12,5 x 7,3 x 19,2 mm – 24 V



REF	Info
<a href="#"><u>111TP1223</u></a>	15,8 x 8,9 x 15,8 mm – 24 V



REF	Info
<a href="#"><u>111TP1652</u></a>	19,9 x 9,3 x 22 mm – 12 V

## ELECTRIC MOTORS WITH PUMP

MOTEURS ÉLECTRIQUES AVEC POMPE – ELEKTROMOTOREN MIT PUMPE



REF	Volt	kW	Info
<a href="#"><u>111TP1653</u></a>	24 V	2 kW	1,2 cc



REF	Volt	kW	Info
<a href="#"><u>111TP1654</u></a>	24 V	2 kW	2 cc
<a href="#"><u>111TP1655</u></a>	24 V	2,2 kW	1,2 cc



REF	Volt	kW	Info
<a href="#"><u>111TP1656</u></a>	24 V	3 kW	3 cc

# USED FOR BÄR CARGOLIFT

WWW.CROVORG.PL

## BEARINGS

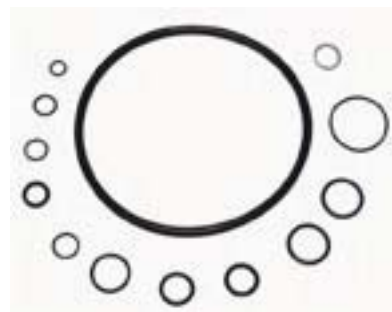
ROULEMENTS – LAGER



REF	Info
<a href="#"><u>111TP1657</u></a>	Ø 12/32 x 10 mm – C3
<a href="#"><u>111TP1658</u></a>	Ø 15/35 x 11 mm

## SEAL KITS

KITS DE JOINTS – DICHTUNGSSÄTZE



REF	Info
<a href="#"><u>111TP1659</u></a>	W3B1

## GUMMY ELEMENT

ÉLÉMENT CAOUTCHOUC – GUMMIELEMENTE



REF	Info
<a href="#"><u>111TP1660</u></a>	Ø 80/94 x 40 mm

## CLAMPS

PINCES – KLAMMERN



REF	Info
<a href="#"><u>111TP1661</u></a>	Ø 180 x 9 mm

MOTORS, PUMPS & PARTS – MOTEURS, POMPES & ACCESSOIRES – MOTOREN, PUMPEN & ERSATZTEILE

# USED FOR BÄR CARGOLIFT

WWW.CROVORG.PL

HOSES & FITTINGS – TUYAUX & RACCORDS – SCHLÄUCHE & KUPPLUNGEN

## HOSES

TUYAUX – SCHLÄUCHE



REF	Hose Ø	Hose Ø	Length	Fitting 1	Fitting 2	Info
<a href="#">111TP1662</a>	1/4"	6,4 mm	680 mm	M16 x 1,5 mm	M16 x 1,5 mm	-40–100 °C
<a href="#">111TP1663</a>	1/4"	6,4 mm	750 mm	M16 x 1,5 mm	M16 x 1,5 mm	-40–100 °C
<a href="#">111TP1664</a>	1/4"	6,4 mm	800 mm	M16 x 1,5 mm	M16 x 1,5 mm	-40–100 °C
<a href="#">111TP1665</a>	1/4"	6,4 mm	900 mm	M16 x 1,5 mm	M16 x 1,5 mm	-40–100 °C
<a href="#">111TP1666</a>	1/4"	6,4 mm	1150 mm	M16 x 1,5 mm	M16 x 1,5 mm	-40–100 °C
<a href="#">111TP1667</a>	1/4"	6,4 mm	1500 mm	M16 x 1,5 mm	M16 x 1,5 mm	-40–100 °C
<a href="#">111TP1668</a>	1/4"	6,4 mm	1650 mm	M16 x 1,5 mm	M16 x 1,5 mm	-40–100 °C
<a href="#">111TP1669</a>	1/4"	6,4 mm	1800 mm	M16 x 1,5 mm	M16 x 1,5 mm	-40–100 °C
<a href="#">111TP1671</a>	1/4"	6,4 mm	2000 mm	M16 x 1,5 mm	M16 x 1,5 mm	-40–100 °C
<a href="#">111TP1670</a>	1/4"	6,4 mm	682 mm	M18 x 1,5 mm	M18 x 1,5 mm	-40–100 °C



REF	Hose Ø	Hose Ø	Length	Fitting 1	Fitting 2	Info
<a href="#">111TP1672</a>	8 mm	4 mm	700 mm	MSFO – M12 x 1,5 mm	MSFO 90S – M12 x 1,5 mm	-40–100 °C
<a href="#">111TP1673</a>	8 mm	4 mm	800 mm	MSFO – M12 x 1,5 mm	MSFO 90S – M12 x 1,5 mm	-40–100 °C
<a href="#">111TP1674</a>	8 mm	4 mm	900 mm	MSFO – M12 x 1,5 mm	MSFO 90S – M12 x 1,5 mm	-40–100 °C
<a href="#">111TP1675</a>	8 mm	4 mm	930 mm	MSFO – M12 x 1,5 mm	MSFO 90S – M12 x 1,5 mm	-40–100 °C
<a href="#">111TP1676</a>	8 mm	4 mm	1560 mm	MSFO – M12 x 1,5 mm	MSFO 90S – M12 x 1,5 mm	-40–100 °C
<a href="#">111TP1677</a>	8 mm	4 mm	2260 mm	MSFO – M12 x 1,5 mm	MSFO 90S – M12 x 1,5 mm	-40–100 °C



REF	Hose Ø	Hose Ø	Length	Fitting 1	Fitting 2	Info
<a href="#">111TP1678</a>	2 mm	5 mm	520 mm	MSFO – M12 x 1,5 mm	MSFO – M12 x 1,5 mm	-40–100 °C

# USED FOR BÄR CARGOLIFT

WWW.CROVORG.PL

## HOSES

TUYAUX – SCHLÄUCHE



REF	Hose Ø	Hose Ø	Length	Fitting 1	Fitting 2	Info
<a href="#"><u>111TP1679</u></a>	1/4"	6,4 mm	840 mm	M16 x 1,5 mm	M16 x 1,5 mm	-40-100 °C



REF	Hose Ø	Hose Ø	Length	Fitting 1	Fitting 2	Info
<a href="#"><u>111TP1680</u></a>	1/4"	6,4 mm	900 mm	M16 x 1,5 mm	M16 x 1,5 mm	-40-100 °C
<a href="#"><u>111TP1681</u></a>	1/4"	6,4 mm	1000 mm	M16 x 1,5 mm	M16 x 1,5 mm	-40-100 °C
<a href="#"><u>111TP1682</u></a>	1/4"	6,4 mm	1270 mm	M16 x 1,5 mm	M16 x 1,5 mm	-40-100 °C
<a href="#"><u>111TP1683</u></a>	1/4	6,4 mm	2150 mm	M16 x 1,5 mm	M16 x 1,5 mm	-40-100 °C

## HOSE SETS

KITS DE TUYAUX – SCHLAUCHSETS



REF	Info
<a href="#"><u>111TP1684</u></a>	Ø 1/4"

## FITTINGS

RACCORDS – KUPPLUNGEN



REF	Info	REF	Info
<a href="#"><u>111TP1685</u></a>	Ø 1/4"	<a href="#"><u>111TP1686</u></a>	16 x 1,5 mm

# USED FOR BÄR CARGOLIFT

WWW.CROVORG.PL

COILS & VALVES – BOBINES & SOUPAPES – SPULEN & VENTILE

## SOLENOID VALVES

ÉLECTROVANNES – MAGNETVENTILE



REF	Volt	Ø	Info
<a href="#"><u>111TP1687</u></a>	12 V	15 mm	M20 x 1,5 mm – SA
<a href="#"><u>111TP1688</u></a>	24 V	15 mm	M20 x 1,5 mm – SA

REF	Volt	Ø	Info
<a href="#"><u>111TP1689</u></a>	12 V	15 mm	M20 x 1,5 mm – DA
<a href="#"><u>111TP1690</u></a>	24 V	15 mm	M20 x 1,5 mm – DA



REF	Volt	Ø	Info
<a href="#"><u>111TP1691</u></a>	12 V	13,8 – 15,3 – 16,8 mm	M20 x 1,5 mm
<a href="#"><u>111TP1692</u></a>	24 V	13,8 – 15,3 – 16,8 mm	M20 x 1,5 mm

## CARTRIDGES

CARTOUCHES – PATRONEN



REF	Ø	Info
<a href="#"><u>111TP1693</u></a>	15 mm	M20 x 1,5 mm – DA

REF	Ø	Info
<a href="#"><u>111TP1694</u></a>	13,8 – 15,3 – 16,8 mm	M20 x 1,5 mm – 4/2



REF	Ø	Info
<a href="#"><u>111TP1695</u></a>	15 mm	M20 x 1,5 mm – SA

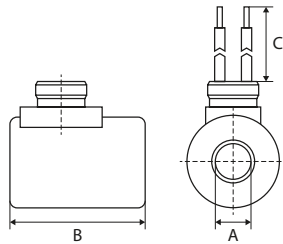


# USED FOR BÄR CARGOLIFT

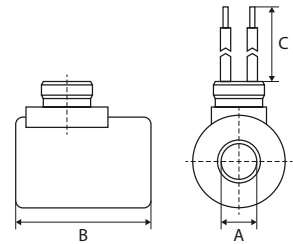
WWW.CROVORG.PL

## COILS

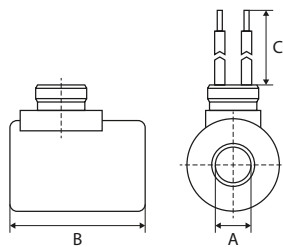
BOBINES – SPULEN



REF	Volt	A	B	Info
<a href="#"><u>111TP1696</u></a>	12 V	18 mm	40 mm	M27 x 1 mm
<a href="#"><u>111TP1697</u></a>	24 V	18 mm	40 mm	M27 x 1 mm



REF	Volt	A	B	C
<a href="#"><u>111TP1698</u></a>	12 V	18 mm	40 mm	3000 mm
<a href="#"><u>111TP1699</u></a>	24 V	18 mm	40 mm	3000 mm



REF	Volt	A	B	C
<a href="#"><u>111TP1700</u></a>	12 V	18 mm	40 mm	5500 mm
<a href="#"><u>111TP1701</u></a>	24 V	18 mm	40 mm	5500 mm

## REGULATING VALVES

SOUPAPES DE RÉGULATION – REGELVENTILE



REF	Info
<a href="#"><u>111TP1702</u></a>	5,6 liter/min – Ø 1/4"

REF	Info
<a href="#"><u>111TP1703</u></a>	

# USED FOR BÄR CARGOLIFT

WWW.CROVORG.PL

COILS & VALVES – BOBINES & SOUPAPES – SPULEN & VENTILE

## VALVES & SWITCHES

SOUPAPES & INTERRUPTEURS – VENTILE & SCHALTER



REF	Info
<a href="#"><u>111TP1704</u></a>	50–250 bar



REF	Info
<a href="#"><u>111TP1705</u></a>	NC 5 bar – 310 mm



REF	Info
<a href="#"><u>111TP1706</u></a>	5 bar – M10



REF	Info
<a href="#"><u>111TP1707</u></a>	80G – Ø 1/4"



REF	Info
<a href="#"><u>111TP1708</u></a>	X1A – SX1

## NUTS

ÉCROUS – MUTTERN



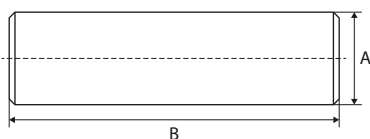
REF	Info
<a href="#"><u>111TP1709</u></a>	M18 x 1,5 mm

# USED FOR BÄR CARGOLIFT

WWW.CROVORG.PL

## PINS

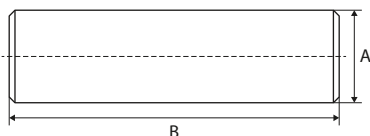
AXES – ACHSEN



REF	A	B	Info
<a href="#"><u>111TP1710</u></a>	30 mm	100 mm	M10 x 1 mm
<a href="#"><u>111TP1711</u></a>	35 mm	90 mm	M10 x 1 mm
<a href="#"><u>111TP1712</u></a>	35 mm	100 mm	M10 x 1 mm
<a href="#"><u>111TP1713</u></a>	35 mm	102 mm	3/8" NF
<a href="#"><u>111TP1714</u></a>	35 mm	107 mm	M10 x 1 mm



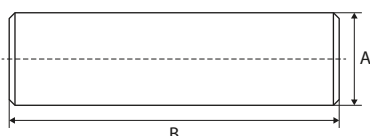
REF	A	B	Info
<a href="#"><u>111TP1715</u></a>	35 mm	110 mm	M10 x 1 mm
<a href="#"><u>111TP1716</u></a>	35 mm	112 mm	M10 x 1 mm
<a href="#"><u>111TP1717</u></a>	35 mm	127 mm	M10 x 1 mm
<a href="#"><u>111TP1718</u></a>	40 mm	130 mm	M10 x 1 mm



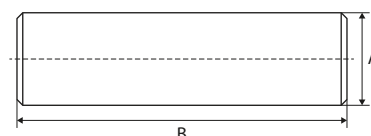
REF	A	B	Info
<a href="#"><u>111TP1719</u></a>	30 mm	84 mm	
<a href="#"><u>111TP1720</u></a>	35 mm	129 mm	
<a href="#"><u>111TP1721</u></a>	40 mm	130 mm	



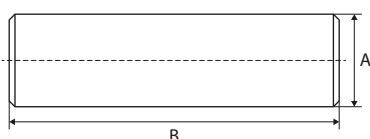
REF	A	B	Info
<a href="#"><u>111TP1722</u></a>	30/35 mm	141 mm	M10 x 1 mm
<a href="#"><u>111TP1723</u></a>	30/35 mm	156 mm	M10 x 1 mm
<a href="#"><u>111TP1724</u></a>	35/35 mm	145 mm	M10 x 1 mm



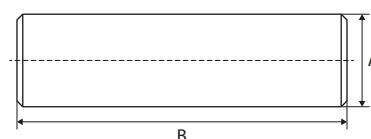
REF	A	B	Info
<a href="#"><u>111TP1725</u></a>	35 mm	82 mm	
<a href="#"><u>111TP1726</u></a>	40 mm	44 mm	
<a href="#"><u>111TP1727</u></a>	40 mm	46 mm	



REF	A	B	Info
<a href="#"><u>111TP1728</u></a>	30/35 mm	155 mm	M10 x 1 mm



REF	A	B	Info
<a href="#"><u>111TP1729</u></a>	30 mm	120 mm	
<a href="#"><u>111TP1730</u></a>	30 mm	125 mm	



REF	A	B	Info
<a href="#"><u>111TP1731</u></a>	35 mm	180 mm	M10 x 1 mm

PINS, BUSHINGS & ROLLERSPINS, BUSHINGS & ROLLERS – AXES, BAGUES & GALETS – ACHSEN, BUCHSEN & ROLLEN

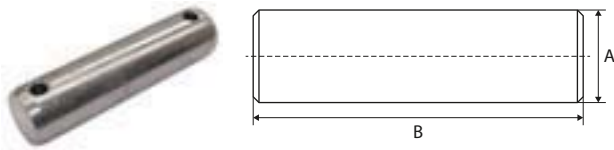
# USED FOR BÄR CARGOLIFT

WWW.CROVORG.PL

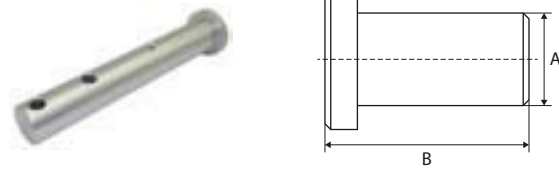
PINS, BUSHINGS & ROLLERSPINS, BUSHINGS & ROLLERS – AXES, BAGUES & GALETS – ACHSEN, BUCHSEN & ROLLEN

## PINS

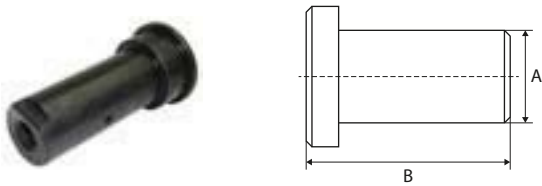
AXES – ACHSEN



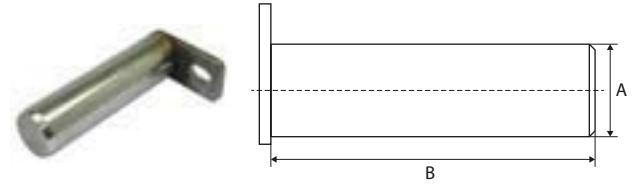
REF	A	B	Info
<a href="#">111TP1732</a>	35 mm	135 mm	



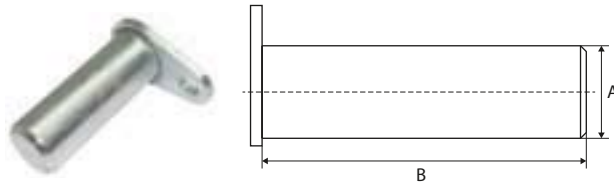
REF	A	B	Info
<a href="#">111TP1733</a>	35/50 mm	233 mm	



REF	A	B	Info
<a href="#">111TP1734</a>	35/45 mm	107 mm	M6 x 1 mm



REF	A	B	Info
<a href="#">111TP1735</a>	30 mm	165 mm	
<a href="#">111TP1736</a>	35 mm	125 mm	
<a href="#">111TP1737</a>	35 mm	147 mm	
<a href="#">111TP1738</a>	35 mm	205 mm	



REF	A	B	Info
<a href="#">111TP1739</a>	30 mm	80 mm	
<a href="#">111TP1740</a>	30 mm	139 mm	
<a href="#">111TP1741</a>	30 mm	170 mm	
<a href="#">111TP1742</a>	35 mm	86 mm	
<a href="#">111TP1743</a>	35 mm	172 mm	
<a href="#">111TP1744</a>	40 mm	90 mm	

## PIN SETS

KITS D'AXES – ACHSENSETS



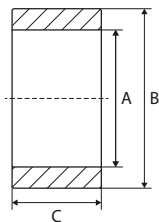
REF	Info
<a href="#">111TP1745</a>	Ø 35 x 113 mm – Ø 40 x 129 mm

# USED FOR BÄR CARGOLIFT

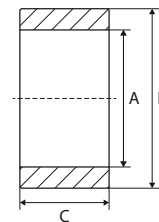
WWW.CROVORG.PL

## PLATFORM ROLLERS

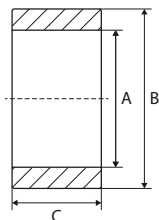
GALETS DE TRANSPALETTE – PLATTFORMROLLEN



REF	A	B	C
<a href="#"><u>111TP1746</u></a>	30 mm	80 mm	50 mm
<a href="#"><u>111TP1747</u></a>	30 mm	100 mm	50 mm
<a href="#"><u>111TP1748</u></a>	35 mm	80 mm	46 mm
<a href="#"><u>111TP5064</u></a>	45 mm	100 mm	20 mm



REF	A	B	C
<a href="#"><u>111TP1749</u></a>	10 mm	80 mm	30 mm



REF	A	B	C
<a href="#"><u>111TP1750</u></a>	30,5 mm	90 mm	49 mm

## PLATFORM ROLLER SETS

KITS DE GALETS DE TRANSPALETTE – PLATTFORMROLLENSETS



REF	Info
<a href="#"><u>111TP1751</u></a>	Ø 30/35/100 x 50 mm – L: 112/145 mm



REF	Info
<a href="#"><u>111TP1752</u></a>	Ø 30/90 x 45 mm – L: 139 mm



REF	Info
<a href="#"><u>111TP1753</u></a>	Ø 35/100 x 20 mm – L: 84/180 mm

PINS, BUSHINGS & ROLLERSPINS, BUSHINGS & ROLLERS – AXES, BAGUES & GALETS – ACHSEN, BUCHSEN & ROLLEN

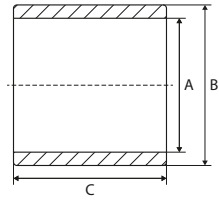
# USED FOR BÄR CARGOLIFT

WWW.CROVORG.PL

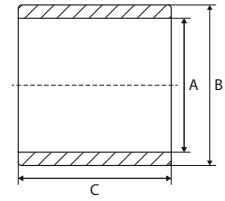
PINS, BUSHINGS & ROLLERSPINS, BUSHINGS & ROLLERS - AXES, BAGUES & GALETS - ACHSEN, BUCHSEN & RÖLLEN

## BUSHINGS

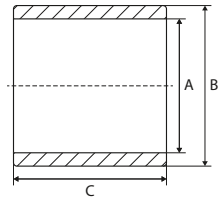
BAGUES - BUCHSEN



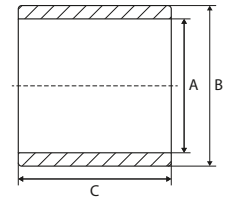
REF	A	B	C	Info
<a href="#"><u>111TP1754</u></a>	35 mm	39 mm	50 mm	
<a href="#"><u>111TP1755</u></a>	35 mm	42 mm	50 mm	



REF	A	B	C	Info
<a href="#"><u>111TP1756</u></a>	30 mm	35 mm	40 mm	
<a href="#"><u>111TP1757</u></a>	30 mm	35 mm	50 mm	
<a href="#"><u>111TP1758</u></a>	30 mm	35 mm	65 mm	
<a href="#"><u>111TP1759</u></a>	35 mm	40 mm	40 mm	
<a href="#"><u>111TP1760</u></a>	35 mm	40 mm	50 mm	
<a href="#"><u>111TP1761</u></a>	35 mm	40 mm	65 mm	



REF	A	B	C	Info
<a href="#"><u>111TP1762</u></a>	40 mm	45 mm	80 mm	



REF	A	B	C	Info
<a href="#"><u>111TP1763</u></a>	30 mm	34 mm	30 mm	DX
<a href="#"><u>111TP1764</u></a>	40 mm	44 mm	20 mm	DX
<a href="#"><u>111TP1765</u></a>	40 mm	44 mm	40 mm	DX



REF	Info
<a href="#"><u>111TP1766</u></a>	Ø 30/36 x 40 mm



REF	Info
<a href="#"><u>111TP1767</u></a>	Ø 35/42 x 52,5 mm

# USED FOR BÄR CARGOLIFT

WWW.CROVORG.PL

## GE BEARINGS

ROULEMENTS AUTO-ALIGNEURS – GELENKLAGER



REF

Info

[111TP1768](#)

Ø 17/30 x 14 mm



REF

Info

[111TP1769](#)

Ø 25/42 x 20 mm

## DISTANCE RINGS

BAGUES D'ÉCARTEMENT – ABSTANDSRINGE



REF

Info

[111TP1770](#)

Ø 16/45/55 x 21 mm

## EYE BOLTS

BOULONS À ŒIL – RINGSCHRAUBEN



REF

Info

[111TP1771](#)

Ø 10 x 50 mm

[111TP1772](#)

Ø 12 x 60 mm

PINS, BUSHINGS & ROLLERSPINS, BUSHINGS & ROLLERS – AXES, BAGUES & GALETS – ACHSEN, BUCHSEN & ROLLEN

# USED FOR BÄR CARGOLIFT

WWW.CROVORG.PL

MECHANICAL PARTS – PIÈCES MÉCANIQUES – MECHANISCHE ERSTATZTEILE

## SCREWS, NUTS & RINGS

VIS, ÉCROUS & RONDELLES – SCHRAUBEN, MUTTERN & RINGE



REF	Info
<a href="#"><u>111TP1773</u></a>	Ø 8 x 22 mm



REF	Info
<a href="#"><u>111TP1774</u></a>	G 1/4"



REF	Info
<a href="#"><u>111TP1775</u></a>	M4 x 8 mm



REF	Info
<a href="#"><u>111TP1776</u></a>	Ø 6/17 x 1,5 mm



REF	Info
<a href="#"><u>111TP1777</u></a>	M16



REF	Info
<a href="#"><u>111TP1778</u></a>	M8 x 16 mm



REF	Info
<a href="#"><u>111TP1304</u></a>	Ø 6 x 16 mm
<a href="#"><u>111TP1305</u></a>	Ø 8 x 60 mm



# USED FOR BÄR CARGOLIFT

WWW.CROVORG.PL

## SCREWS, NUTS & RINGS

VIS, ÉCROUS & RONDELLES – SCHRAUBEN, MUTTERN & RINGE



REF	Info
<a href="#"><u>111TP1345</u></a>	M8 x 12 mm
<a href="#"><u>111TP1264</u></a>	M8 x 16 mm
<a href="#"><u>111TP1265</u></a>	M10 x 18 mm



REF	Info
<a href="#"><u>111TP1779</u></a>	M10 x 30 mm
<a href="#"><u>111TP1266</u></a>	M12 x 50 mm
<a href="#"><u>111TP1267</u></a>	M16 x 30 mm
<a href="#"><u>111TP1268</u></a>	M16 x 40 mm
<a href="#"><u>111TP1269</u></a>	M16 x 80 mm



REF	Info
<a href="#"><u>111TP1270</u></a>	M8 x 75 mm
<a href="#"><u>111TP1271</u></a>	M10 x 75 mm
<a href="#"><u>111TP1344</u></a>	M14 x 150 mm
<a href="#"><u>111TP1272</u></a>	M14 x 180 mm
<a href="#"><u>111TP1273</u></a>	M14 x 230 mm
<a href="#"><u>111TP1274</u></a>	M16 x 75 mm
<a href="#"><u>111TP1275</u></a>	M16 x 150 mm
<a href="#"><u>111TP1276</u></a>	M16 x 155 mm



REF	Info
<a href="#"><u>111TP1277</u></a>	M6 x 80 mm
<a href="#"><u>111TP1278</u></a>	M8 x 30 mm
<a href="#"><u>111TP1279</u></a>	M8 x 60 mm
<a href="#"><u>111TP1280</u></a>	M16 x 45 mm
<a href="#"><u>111TP1281</u></a>	M20 x 50 mm



REF	Info
<a href="#"><u>111TP1282</u></a>	M8 x 12 mm
<a href="#"><u>111TP1283</u></a>	M10 x 20 mm



REF	Info
<a href="#"><u>111TP1284</u></a>	M6 x 12 mm
<a href="#"><u>111TP1285</u></a>	M6 x 16 mm
<a href="#"><u>111TP1286</u></a>	M12 x 30 mm

# USED FOR BÄR CARGOLIFT

WWW.CROVORG.PL

MECHANICAL PARTS – PIÈCES MÉCANIQUES – MECHANISCHE ERSTATZTEILE

## SCREWS, NUTS & RINGS

VIS, ÉCROUS & RONDELLES – SCHRAUBEN, MUTTERN & RINGE



REF	Info
<a href="#"><u>111TP1287</u></a>	M8 x 20 mm
<a href="#"><u>111TP1288</u></a>	M8 x 25 mm
<a href="#"><u>111TP1289</u></a>	M8 x 30 mm
<a href="#"><u>111TP1290</u></a>	M12 x 25 mm
<a href="#"><u>111TP1291</u></a>	M12 x 45 mm

REF	Info
<a href="#"><u>111TP1306</u></a>	M6 x 45 mm
<a href="#"><u>111TP1342</u></a>	M8 x 80 mm
<a href="#"><u>111TP1307</u></a>	M8 x 90 mm
<a href="#"><u>111TP1308</u></a>	M10 x 80 mm



REF	Info
<a href="#"><u>111TP1292</u></a>	M3
<a href="#"><u>111TP1293</u></a>	M5
<a href="#"><u>111TP1294</u></a>	M6
<a href="#"><u>111TP1295</u></a>	M8
<a href="#"><u>111TP1296</u></a>	M10
<a href="#"><u>111TP1297</u></a>	M12
<a href="#"><u>111TP1298</u></a>	M14
<a href="#"><u>111TP1299</u></a>	M16
<a href="#"><u>111TP1300</u></a>	M20

REF	Info
<a href="#"><u>111TP1309</u></a>	Ø 25 mm
<a href="#"><u>111TP1310</u></a>	Ø 28 mm
<a href="#"><u>111TP1311</u></a>	Ø 30 mm
<a href="#"><u>111TP1312</u></a>	Ø 35 mm
<a href="#"><u>111TP1314</u></a>	Ø 39 mm
<a href="#"><u>111TP1313</u></a>	Ø 40 mm



REF	Info
<a href="#"><u>111TP1301</u></a>	Ø 6 mm
<a href="#"><u>111TP1302</u></a>	Ø 8 mm
<a href="#"><u>111TP1303</u></a>	Ø 24 mm

REF	Info
<a href="#"><u>111TP1315</u></a>	M6
<a href="#"><u>111TP1316</u></a>	M8
<a href="#"><u>111TP1343</u></a>	M16

# USED FOR BÄR CARGOLIFT

WWW.CROVORG.PL

## ROLL STOPS & PARTS

BUTÉES DE ROUES & ACCESSOIRES – ABROLLSICHERUNGEN & ERSATZTEILE



REF

Info

[111TP1780](#)



REF

Info

[111TP1781](#)

Ø 12 x 930 mm

## SPRINGS & GAS SPRINGS

RESSORTS & VÉRINS À GAZ – FEDERN & GASDRUCKFEDERN



REF

Info

[111TP1782](#)

Ø 18 mm – 2,3 mm



REF

Info

[111TP1783](#)

Ø 19 mm – 3 mm



REF

Info

[111TP1784](#)

Ø 20 x 40 mm – 3000N



REF

Info

[111TP1785](#)

1040 mm – Ø 11 mm – right

## BUMPERS & BUFFERS

PARE-CHOC & BUTOIRS – STOSSDÄMPFER & -PUFFER



REF

Info

[111TP1786](#)

Ø 30 x 36 mm – M8

# USED FOR BÄR CARGOLIFT

WWW.CROVORG.PL

MECHANICAL PARTS – PIÈCES MÉCANIQUES – MECHANISCHE ERSTATZTEILE

## CAPS

BOUCHONS – DECKEL



REF	Info
<a href="#"><u>111TP1787</u></a>	120 x 80 mm



REF	Info
<a href="#"><u>111TP1788</u></a>	160 x 160 mm



REF	Info
<a href="#"><u>111TP1789</u></a>	180 x 180 mm



REF	Info
<a href="#"><u>111TP1790</u></a>	Ø 113,5 mm



REF	Info
<a href="#"><u>111TP1791</u></a>	Ø 114,3 mm



REF	Info
<a href="#"><u>111TP1792</u></a>	Ø 127 mm



REF	Info
<a href="#"><u>111TP1793</u></a>	Ø 40 mm



REF	Info
<a href="#"><u>111TP1794</u></a>	Ø 80 mm

# USED FOR BÄR CARGOLIFT

WWW.CROVORG.PL

## PLATFORM PARTS

PIÈCES DE PLATEFORME – PLATTFORMERSATZTEILE



REF	Info
<a href="#"><u>111TP1795</u></a>	50 x 10 x 78 mm



REF	Info
<a href="#"><u>111TP1796</u></a>	Ø 20 x 10 mm



REF	Info
<a href="#"><u>111TP1797</u></a>	150 x 147 x 93 mm – 4 x Ø 17 mm



REF	Info
<a href="#"><u>111TP1798</u></a>	205 x 108 x 92 mm – 6 x Ø 17 mm



REF	Info
<a href="#"><u>111TP1799</u></a>	135 x 60 mm



REF	Info
<a href="#"><u>111TP1800</u></a>	28 x 10 x 2770 mm



REF	Info
<a href="#"><u>111TP1801</u></a>	2505 mm



REF	Info
<a href="#"><u>111TP1802</u></a>	2300 mm



REF	Info
<a href="#"><u>111TP1803</u></a>	849 x 82 mm



REF	Info
<a href="#"><u>111TP1804</u></a>	745 mm

# USED FOR BÄR CARGOLIFT

WWW.CROVORG.PL

MECHANICAL PARTS – PIÈCES MÉCANIQUES – MECHANISCHE ERSTATZTEILE

## PLATFORM PARTS

PIÈCES DE PLATEFORME – PLATTFORMERSATZTEILE



REF	Info
<a href="#"><u>111TP1805</u></a>	2,5 x 1508 mm – right



REF	Info
<a href="#"><u>111TP1806</u></a>	2,5 x 1508 mm – left



REF	Info
<a href="#"><u>111TP1807</u></a>	Right
<a href="#"><u>111TP1808</u></a>	Left



REF	Info
<a href="#"><u>111TP1809</u></a>	1/2"



REF	Info
<a href="#"><u>111TP1810</u></a>	1/2"



REF	Info
<a href="#"><u>111TP1811</u></a>	BS



REF	Info
<a href="#"><u>111TP1812</u></a>	135 x 60 mm



REF	Info
<a href="#"><u>111TP1813</u></a>	AL1000 – 1435 x 1065 x 270 mm



REF	Info
<a href="#"><u>111TP1814</u></a>	Ø 20/40 x 75 mm



REF	Info
<a href="#"><u>111TP1815</u></a>	Ø 20/40 x 75 mm

# USED FOR BÄR CARGOLIFT

WWW.CROVORG.PL

## PLATFORM PARTS

PIÈCES DE PLATEFORME – PLATTFORMERSATZTEILE



REF	Info
<a href="#"><u>111TP1816</u></a>	2810 mm



REF	Info
<a href="#"><u>111TP1817</u></a>	2515 mm



REF	Info
<a href="#"><u>111TP1319</u></a>	§ 53b Abs. 5 StVZO TÜV/CE with certificate – 250 x 400 mm



REF	Info
<a href="#"><u>111TP1320</u></a>	§ 53b Abs. 5 StVZO TÜV/CE without certificate – 250 x 400 mm



REF	Info
<a href="#"><u>111TP1818</u></a>	Ø 30/46/75 mm



REF	Info
<a href="#"><u>111TP1819</u></a>	212 x 153 mm

## PLATFORM LOCKS

VERROUILLAGE DE PLATEFORME – PLATTFORMVERSCHLÜSSE



REF	Info
<a href="#"><u>111TP1820</u></a>	

# USED FOR BÄR CARGOLIFT

WWW.CROVORG.PL

MECHANICAL PARTS – PIÈCES MÉCANIQUES – MECHANISCHE ERSTATZTEILE

## GREASE FITTINGS & CAPS

RACCORDS DE GRAISSAGE & BOUCHONS – SCHMIERNIPPEL & SCHUTZKAPPEN



REF	Info
<a href="#"><u>111TP1821</u></a>	M6 x 1 mm – 180°



REF	Info
<a href="#"><u>111TP1822</u></a>	M10 x 1 mm – 90°



REF	Info
<a href="#"><u>111TP1823</u></a>	M10 x 1 mm – 180°



REF	Info
<a href="#"><u>111TP1824</u></a>	Ø 6 mm



# USED FOR BÄR CARGOLIFT

WWW.CROVORG.PL

## JOYSTICKS

LEVIER DE COMMANDE – JOYSTICKS



REF	Info
<a href="#"><u>111TP1825</u></a>	R2



REF	Info
<a href="#"><u>111TP1826</u></a>	L2



REF	Info
<a href="#"><u>111TP1827</u></a>	R4



REF	Info
<a href="#"><u>111TP1828</u></a>	L4



REF	Info
<a href="#"><u>111TP1829</u></a>	Without contact block



REF	Info
<a href="#"><u>111TP1830</u></a>	With seal

## USED FOR BÄR CARGOLIFT

WWW.CROVORG.PL

## ROTARY/PUSH SWITCHES &amp; PARTS

INTERRUPTEURS ROTATIFS/POUSOIRS &amp; ACCESSOIRES – DREH-/DRUCKSCHALTER &amp; ERSATZTEILE



REF	Info
<a href="#"><u>111TP1831</u></a>	12–24 V



REF	Info
<a href="#"><u>111TP1832</u></a>	24 V – S/S4



REF	Info
<a href="#"><u>111TP1833</u></a>	24 V – S4/SX1

## FOOT CONTROLLERS &amp; PARTS

COMMANDES AU PIED &amp; ACCESSOIRES – FUSSSCHALTER &amp; ERSATZTEILE



REF	Info
<a href="#"><u>111TP1834</u></a>	Up – H



REF	Info
<a href="#"><u>111TP1835</u></a>	Down – S



REF	Info
<a href="#"><u>111TP1836</u></a>	1500 mm – up



REF	Info
<a href="#"><u>111TP1837</u></a>	1500 mm – down

## FOOT CONTROLLERS & PARTS

COMMANDES AU PIED & ACCESSOIRES – FUSSSCHALTER & ERSATZTEILE



REF	Info
<a href="#"><u>111TP1838</u></a>	500 mm – up



REF	Info
<a href="#"><u>111TP1839</u></a>	500 mm – down



REF	Info
<a href="#"><u>111TP1840</u></a>	Ø 41 mm



REF	Info
<a href="#"><u>111TP1841</u></a>	Ø 38 mm – 4 x Ø 3 mm



REF	Info
<a href="#"><u>111TP1842</u></a>	



REF	Info
<a href="#"><u>111TP1843</u></a>	Ø 14,5/20 mm



REF	Info
<a href="#"><u>111TP1844</u></a>	BC750, 751, 1000SX1



REF	Info
<a href="#"><u>111TP1845</u></a>	335 x 85 mm

# USED FOR BÄR CARGOLIFT

WWW.CROVORG.PL

SWITCHES & CONTROLLERS – INTERRUPTEURS & COMMANDES – SCHALTER & BEDIENTUNGEN

## FOOT CONTROLLERS & PARTS

COMMANDES AU PIED & ACCESSOIRES – FUSSSCHALTER & ERSATZTEILE



REF	Info
<a href="#">111TP1846</a>	0–180°



REF	Info
<a href="#">111TP1847</a>	0–180°



REF	Info
<a href="#">111TP1848</a>	0–90°



REF	Info
<a href="#">111TP1849</a>	0–90°



REF	Info
<a href="#">111TP1850</a>	800 mm

# USED FOR BÄR CARGOLIFT

WWW.CROVORG.PL

## CONTACT ELEMENTS

BLOCS DE CONTACT – KONTAKTELEMENTE



REF	Info
<a href="#"><u>111TP1851</u></a>	1 x NO – 1 x NC



REF	Info
<a href="#"><u>111TP1852</u></a>	31/32/43/44



REF	Info
<a href="#"><u>111TP1853</u></a>	11/12/23/24



REF	Info
<a href="#"><u>111TP1854</u></a>	31/32/43/44



REF	Info
<a href="#"><u>111TP1855</u></a>	11/12/23/24



REF	Info
<a href="#"><u>111TP1856</u></a>	51/52/63/64

## LIMIT/MICRO SWITCHES

INTERRUPTEURS DE FIN DE COURSE/MICROINTERRUPTEURS – END-/MIKROSCHALTER



REF	Info
<a href="#"><u>111TP1857</u></a>	Set



REF	Info
<a href="#"><u>111TP1858</u></a>	IP65

## USED FOR BÄR CARGOLIFT

WWW.CROVORG.PL

## CONTROL BOXES &amp; PARTS

BOÎTIERS DE CONTRÔLE &amp; ACCESSOIRES – BEDIENKÄSTEN &amp; ERSATZTEILE



REF	Info
<a href="#"><u>111TP1859</u></a>	120 x 90 x 22 mm – CP240



REF	Info
<a href="#"><u>111TP1860</u></a>	12–24 V



REF	Info
<a href="#"><u>111TP1861</u></a>	12–24 V



REF	Info
<a href="#"><u>111TP1862</u></a>	With key switch



REF	Info
<a href="#"><u>111TP1863</u></a>	220 x 120 mm

# USED FOR BÄR CARGOLIFT

WWW.CROVORG.PL

## SENSORS & SWITCHES

CAPTEURS & INTERRUPTEURS – SENSOREN & SCHALTER



REF	Info
<a href="#"><u>111TP1864</u></a>	12–24 V – M12 x 38 mm – IP67



REF	Info
<a href="#"><u>111TP1865</u></a>	10–36 V – M12 x 54 mm – IP67



REF	Info
<a href="#"><u>111TP1866</u></a>	BS – 80 x 200 mm



REF	Info
<a href="#"><u>111TP1867</u></a>	550 mm – 53,4 x 44,7 x 23,3 mm

## MICROSWITCHES WITH CABLE

MICRORUPTEURS AVEC CÂBLE – MIKROSCHALTER MIT KABEL



REF	Info
<a href="#"><u>111TP1868</u></a>	250 V – 5 A – IP66 – 500 mm



REF	Info
<a href="#"><u>111TP1869</u></a>	250 V – 5 A – IP66 – 1500 mm



REF	Info
<a href="#"><u>111TP1870</u></a>	250 V – 5 A – IP66 – 3500 mm

# USED FOR BÄR CARGOLIFT

WWW.CROVORG.PL

## KEYS CLÉS – SCHLÜSSEL



REF	Info
<a href="#">111TP1871</a>	40,5 x 13 x 6 mm

## VARIOUS CONTROLLER PARTS DIVERSES PIÈCES DE COMMANDE – WEITERE BEDIENTUNG-ERSATZTEILE



REF	Info
<a href="#">111TP1872</a>	Two points



REF	Info
<a href="#">111TP1873</a>	52 mm – Ø 29/14 mm



# USED FOR BÄR CARGOLIFT

WWW.CROVORG.PL

## BATTERY CABLES

CÂBLES DE BATTERIE – BATTERIEKABEL



REF	Info
<a href="#"><u>111TP1874</u></a>	25 mm <sup>2</sup> x 12 m



REF	Info
<a href="#"><u>111TP1875</u></a>	25 mm <sup>2</sup> x 12 m



REF	Info
<a href="#"><u>111TP1876</u></a>	25 mm <sup>2</sup> x 1,9 m



REF	Info
<a href="#"><u>111TP1877</u></a>	25 mm <sup>2</sup> x 2 m – negative



REF	Info
<a href="#"><u>111TP1878</u></a>	25 mm <sup>2</sup> x 2 m – positive



REF	Info
<a href="#"><u>111TP1879</u></a>	15 m – complete

## KOSTAL CABLES

CÂBLES KOSTAL – KOSTALKABEL



REF	Info
<a href="#"><u>111TP1880</u></a>	4 m – M27 x 1 mm

# USED FOR BÄR CARGOLIFT

WWW.CROVORG.PL

CABLES & CONNECTORS – CÂBLES & CONNECTEURS – KABEL & STECKER

## SPIRAL CABLES

CÂBLES SPIRALÉS – SPIRALKABEL



REF	Info
<a href="#"><u>111TP1881</u></a>	3–4,5 m

## CABLES & PARTS

CÂBLES DE BATTERIE – KABEL & ERSATZTEILE



REF	Info
<a href="#"><u>111TP1882</u></a>	12 M24 – 12 V



REF	Info
<a href="#"><u>111TP1883</u></a>	2 x M24 – 12 V



REF	Info
<a href="#"><u>111TP1884</u></a>	7 x 0,75 mm <sup>2</sup>



REF	Info
<a href="#"><u>111TP1885</u></a>	60 x 450 mm



REF	Info
<a href="#"><u>111TP1886</u></a>	8 x 1 mm <sup>2</sup> x 2700 mm



REF	Info
<a href="#"><u>111TP1887</u></a>	7 x 0,75 mm <sup>2</sup> x 1500 mm

# USED FOR BÄR CARGOLIFT

WWW.CROVORG.PL

## CABLES & PARTS

CÂBLES DE BATTERIE – KABEL & ERSATZTEILE



REF	Info
<a href="#"><u>111TP1888</u></a>	4 x 1,5 mm <sup>2</sup> x 2690 mm



REF	Info
<a href="#"><u>111TP1889</u></a>	2550 mm



REF	Info
<a href="#"><u>111TP1890</u></a>	25 mm <sup>2</sup>



REF	Info
<a href="#"><u>111TP1891</u></a>	7 x 0,75 mm <sup>2</sup> x 2600 mm

CABLES & CONNECTORS – CÂBLES & CONNECTEURS – KABEL & STECKER

# USED FOR BÄR CARGOLIFT

WWW.CROVORG.PL

CABLES & CONNECTORS – Câbles & Connecteurs – Kabel & Stecker

## CONNECTORS & PARTS

CONNECTEURS & ACCESSOIRES – STECKER & ERSATZTEILE



REF	Info
<a href="#"><u>111TP1892</u></a>	7 pole – VEHH



REF	Info
<a href="#"><u>111TP1893</u></a>	7 pole – VEHH



REF	Info
<a href="#"><u>111TP1894</u></a>	4 pole



REF	Info
<a href="#"><u>111TP1895</u></a>	4 pole



REF	Info
<a href="#"><u>111TP1896</u></a>	7/8" UNS – 18G – L: 45 mm



REF	Info
<a href="#"><u>111TP1897</u></a>	7/8" UNS – 18G – L: 45 mm



REF	Info
<a href="#"><u>111TP1898</u></a>	25 mm²

# USED FOR BÄR CARGOLIFT

WWW.CROVORG.PL

## FLASHLIGHTS & PARTS

LAMPES TORCHES & ACCESSOIRES – BLINKLEUCHTEN & ERSATZTEILE



REF	Info
<a href="#"><u>111TP1503</u></a>	20° – IP68



REF	Info
<a href="#"><u>111TP1504</u></a>	Used for REF <a href="#"><u>111TP1503</u></a>



REF	Info
<a href="#"><u>111TP1899</u></a>	12 V – 5 W
<a href="#"><u>111TP1900</u></a>	24 V – 5 W



REF	Info
<a href="#"><u>111TP1901</u></a>	12 V – LED – type: D
<a href="#"><u>111TP1902</u></a>	24 V – LED – type: D



REF	Info
<a href="#"><u>111TP1903</u></a>	12 V – 4 W – LED
<a href="#"><u>111TP1904</u></a>	24 V – 8 W – LED

## CIRCUIT BOARDS/CONTROLLERS

CIRCUITS IMPRIMÉS/COMMANDES – LEITERPLATTEN/BEDIENUNGEN



REF	Info
<a href="#"><u>111TP1905</u></a>	24 V – SX-X1A



REF	Info
<a href="#"><u>111TP1906</u></a>	24 V



REF	Info
<a href="#"><u>111TP1907</u></a>	24 V – S4



REF	Info
<a href="#"><u>111TP1908</u></a>	24 V – S2



REF	Info
<a href="#"><u>111TP1909</u></a>	24 V



REF	Info
<a href="#"><u>111TP1910</u></a>	12 V



REF	Info
<a href="#"><u>111TP1911</u></a>	12 V – S2



REF	Info
<a href="#"><u>111TP1912</u></a>	12 V

# USED FOR BÄR CARGOLIFT

WWW.CROVORG.PL

## CIRCUIT BOARDS/CONTROLLERS

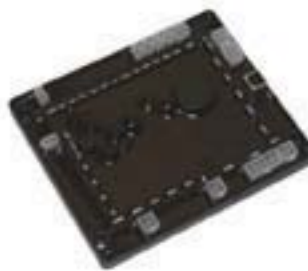
CIRCUITS IMPRIMÉS/COMMANDES – LEITERPLATTEN/BEDIENUNGEN



REF	Info
<a href="#"><u>111TP1913</u></a>	24 V



REF	Info
<a href="#"><u>111TP1914</u></a>	24 V



REF	Info
<a href="#"><u>111TP1915</u></a>	Serial number needed



REF	Info
<a href="#"><u>111TP1948</u></a>	EBCMAXI

## RELAIS

RELAIS – RELAIS



REF	Info
<a href="#"><u>111TP1916</u></a>	12 V – 20–30 A – NO/NC
<a href="#"><u>111TP1917</u></a>	24 V – 10–20 A – NO/NC



REF	Info
<a href="#"><u>111TP1918</u></a>	24 V – 50 A

## CABLE SHOES & BATTERY CLAMPS

CONNECTEURS & PINCES DE BATTERIE – KABELSCHUHE & BATTERIEKLAMMERN

REF	Info
<a href="#"><u>111TP1919</u></a>	6 mm – 25 mm <sup>2</sup>
<a href="#"><u>111TP1920</u></a>	8 mm – 25 mm <sup>2</sup>
<a href="#"><u>111TP1921</u></a>	10 mm – 25 mm <sup>2</sup>



ELECTRICAL PARTS – PIÈCES ÉLECTRIQUES – ELEKTRISCHE ERSATZTEILE



# USED FOR BÄR CARGOLIFT

WWW.CROVORG.PL

ELECTRICAL PARTS – PIÈCES ÉLECTRIQUES – ELEKTRISCHE ERSATZTEILE

## FUSES

FUSIBLES – SICHERUNGEN



REF	Info
<a href="#">111TP1922</a>	50 A – DIN 72581/5
<a href="#">111TP1923</a>	75 A – DIN 72581/5
<a href="#">111TP1924</a>	100 A – DIN 72581/5
<a href="#">111TP1925</a>	150 A – DIN 72581/5
<a href="#">111TP1926</a>	200 A – DIN 72581/5
<a href="#">111TP1927</a>	250 A – DIN 72581/5

REF	Info
<a href="#">111TP1928</a>	50 A



REF	Info
<a href="#">111TP1929</a>	100 A



REF	Info
<a href="#">111TP1930</a>	150 A



REF	Info
<a href="#">111TP1931</a>	200 A



REF	Info
<a href="#">111TP1932</a>	250 A



# USED FOR BÄR CARGOLIFT

WWW.CROVORG.PL

## FUSE HOLDERS & PARTS

PORTE-FUSIBLES & ACCESSOIRES – SICHERUNGSHALTER & ERSATZTEILE



REF	Info
<a href="#"><u>111TP5009</u></a>	M8



REF	Info
<a href="#"><u>111TP1933</u></a>	M8



REF	Info
<a href="#"><u>111TP1934</u></a>	20 A max – DIN 72581/med

## VARIOUS ELECTRICAL PARTS

DIVERSES PIÈCES ÉLECTRIQUES – WEITERE ELEKTRISCHE ERSATZTEILE



REF	Info
<a href="#"><u>111TP1935</u></a>	PG9
<a href="#"><u>111TP1936</u></a>	PG11
<a href="#"><u>111TP1937</u></a>	PG13.5



REF	Info
<a href="#"><u>111TP1938</u></a>	15 x 55 x 3 mm



REF	Info
<a href="#"><u>111TP1939</u></a>	± 100 x 120 mm



REF	Info
<a href="#"><u>111TP1940</u></a>	8 pole

ELECTRICAL PARTS – PIÈCES ÉLECTRIQUES – ELEKTRISCHE ERSATZTEILE

# USED FOR BÄR CARGOLIFT

WWW.CROVORG.PL

VARIOUS PARTS – DIVERSES PIÈCES – VERSCHIEDENE ERSATZTEILE

## BATTERY COVERS/HOUSINGS

COUVERCLES/LOGEMENTS BATTERIE – BATTERIEKÄSTEN/-DECKEL



REF	Info
<a href="#"><u>111TP1941</u></a>	670 x 550 x 275 mm



REF	Info
<a href="#"><u>111TP1942</u></a>	630 x 645 x 260 mm



REF	Info
<a href="#"><u>111TP1943</u></a>	630 x 645 x 260 mm

# USED FOR BÄR CARGOLIFT

WWW.CROVORG.PL

## DECALS AUTOCOLLANTS – AUFKLEBER



REF

Info

**111TP1944**

160 x 75 mm

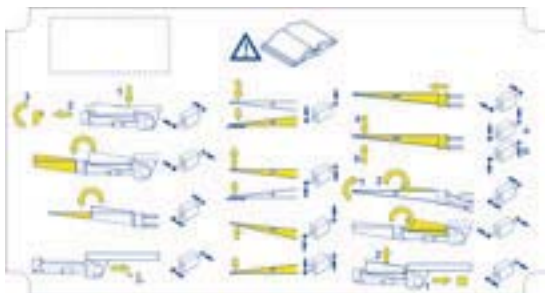


REF

Info

**111TP1945**

212 x 112 mm – S4-S2

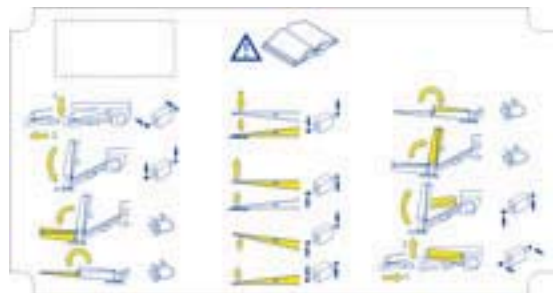


REF

Info

**111TP1946**

212 x 112 mm



REF

Info

**111TP1947**

212 x 112 mm – R-42

# USED FOR BÄR CARGOLIFT

WWW.CROVORG.PL

NOTES – NOTIZ

Area for handwritten notes, consisting of multiple horizontal dotted lines.