

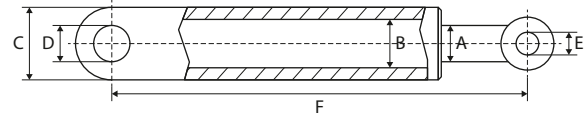


2

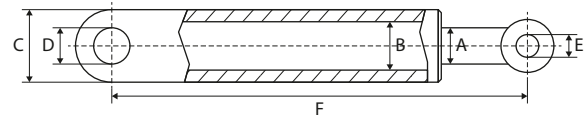
USED FOR ANTEO

LIFT CYLINDERS

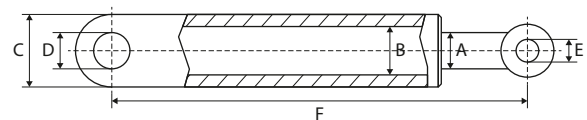
VÉRINS DE LEVAGE – HUBZYLINDER



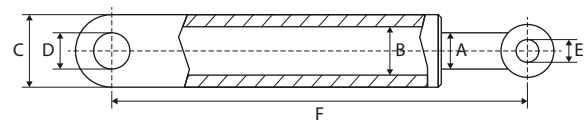
REF	A	B	C	D	E	F	Info
<u>111TP1347</u>	35 mm	60 mm	70 mm	30 mm	30 mm	631 mm	Futura



REF	A	B	C	D	E	F	Info
<u>111TP1348</u>	35 mm	60 mm	70 mm	30 mm	30 mm	538 mm	Business



REF	A	B	C	D	E	F	Info
<u>111TP1349</u>	40 mm	70 mm	80 mm	30 mm	30 mm	548 mm	Left – F3
<u>111TP1350</u>	40 mm	70 mm	80 mm	30 mm	30 mm	548 mm	Right – F3



REF	A	B	C	D	E	F	Info
<u>111TP1351</u>	50 mm	90 mm	102 mm	30 mm	30 mm	549 mm	REP

SEAL KITS

KITS DE JOINTS – DICHTUNGSSÄTZE



REF	Info
<u>111TP1352</u>	Ø 30/55 mm



REF	Info
<u>111TP1356</u>	Ø 30/60 mm



REF	Info
<u>111TP1353</u>	Ø 30/80 mm



REF	Info
<u>111TP1357</u>	Ø 35/70 mm – micro



REF	Info
<u>111TP1354</u>	Ø 40/60 mm



REF	Info
<u>111TP1358</u>	Ø 40/70 mm – F3CL 20H



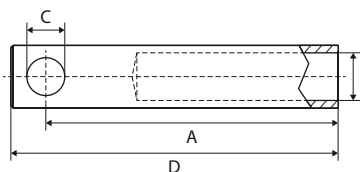
REF	Info
<u>111TP1355</u>	Ø 40/80 mm – F3CL 20H



REF	Info
<u>111TP1359</u>	Ø 45/70 mm

EXTENSIONS

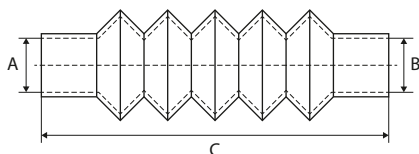
RALLONGES – VERLÄNGERUNG



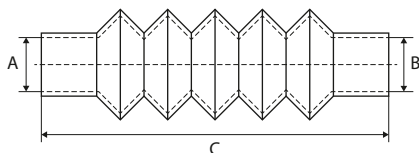
REF	A	B	C	D	Info
<u>111TP1361</u>	220 mm	M38	30 mm	245 mm	F3 CHL
<u>111TP1360</u>	370 mm	M38	30 mm	396 mm	H/S

DUST COVERS

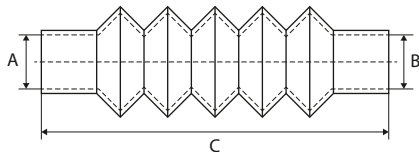
CACHE-POUSSIÈRE – STAUBKAPPE



REF	Ø A/B	Min–C–Max	#1	#2
<u>111TP1362</u>	40/60 mm	70–185–290 mm	<u>111TP5003</u>	<u>111TP5004</u>



REF	Ø A/B	Min–C–Max	#1	#2
<u>111TP1363</u>	50/90 mm	75–215–320 mm	<u>111TP4999</u>	<u>111TP5005</u>



REF	Ø A/B	Min–C–Max	#1	#2
<u>111TP1364</u>	60/70 mm	70–210–300 mm	<u>111TP5004</u>	<u>111TP4918</u>

SEALS

JOINTS – DICHTUNGEN



REF

Info

111TP1365

Ø M18 – 18,7 x 26 x 1,5 mm

TANKS & OIL RESERVOIRS

RÉSERVOIRS (D'HUILE) – TANKS & ÖLBEHÄLTER



REF

Info

111TP1366

295 x 235 x 150/375 mm – 6 liter

USED FOR ANTEO

WWW.CROVORG.PL

ELECTRIC MOTORS

MOTEURS ÉLECTRIQUES – ELEKTROMOTOREN



REF	Volt	kW	Rotation
<u>111TP1367</u>	12 V	2 kW	CW >>
<u>111TP1368</u>	24 V	2 kW	CW >>

REF	Volt	kW	Rotation
<u>111TP1371</u>	12 V	2 kW	CW >>
<u>111TP1372</u>	24 V	2 kW	CW >>



REF	Volt	kW	Rotation
<u>111TP1369</u>	12 V	2 kW	CW >>
<u>111TP1370</u>	24 V	2 kW	CW >>

HYDRAULIC PUMPS

POMPES HYDRAULIQUES – HYDRAULIKPUMPEN



REF	CC	Rotation	Info
<u>111TP1373</u>	1,1 cc	<< CCW	CBK-TYP
<u>111TP1374</u>	1,6 cc	<< CCW	CBK-TYP
<u>111TP1375</u>	2,6 cc	<< CCW	CBK-TYP

REF	Info
<u>111TP1376</u>	OMP250

MOTORS, PUMPS & PARTS – MOTEURS, POMPES & ACCESSOIRES – MOTOREN, PUMPEN & ERSATZTEILE

SOLENOID SWITCHES/CONTACTORS

SOLÉNOÏDES/CONTACTEURS – MAGNETSCHALTER/SCHÜTZE



REF	Volt	Amp	Info
<u>111TP1377</u>	12 V	80 A	
<u>111TP1378</u>	24 V	80 A	



REF	Volt	Amp	Info
<u>111TP1379</u>	12 V	100 A	
<u>111TP1380</u>	24 V	100 A	



REF	Volt	Amp	Info
<u>111TP1381</u>	12 V	150 A	
<u>111TP1382</u>	24 V	150 A	

COUPLERS

COUPLEURS – KUPPLUNGEN



REF	Info
<u>111TP1383</u>	Ø 18 x 32 mm – F2



REF	Info
<u>111TP1384</u>	Ø 18 x 44 mm



REF	Info
<u>111TP1385</u>	Ø 22 x 13 mm

BRUSHES

BALAIS – KOHLEBÜRSTEN



REF	Info
<u>111TP1386</u>	15,8 x 8,9 x 15,8 mm – 24 V

BRUSH ROCKERS

COLLIERS PORTE-BALAIS – KOHLENHALTER



REF	Info
<u>111TP1225</u>	Ø 105 mm

BEARINGS

ROULEMENTS – LAGER

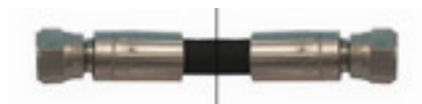


REF	Info
<u>111TP1387</u>	Ø 12/16 x 10 mm

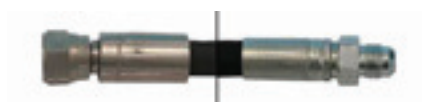
REF	Info
<u>111TP1226</u>	Ø 12/32 x 10 mm
<u>111TP1388</u>	Ø 20/42 x 12 mm

HOSES

TUYAUX – SCHLÄUCHE



REF	Hose Ø	Hose Ø	Length	Fitting 1	Fitting 2	Info
111TP1389	1/4"	6,4 mm	1120 mm	9/16"	9/16"	-40-100 °C
111TP1390	1/4"	6,4 mm	1220 mm	9/16"	9/16"	-40-100 °C



REF	Hose Ø	Hose Ø	Length	Fitting 1	Fitting 2	Info
111TP1391	1/4"	6,4 mm	980 mm	9/16"	9/16"	-40-100 °C



REF	Hose Ø	Hose Ø	Length	Fitting 1	Fitting 2	Info
111TP1392	1/4"	6,4 mm	465 mm	9/16"	9/16"	-40-100 °C
111TP1393	1/4"	6,4 mm	560 mm	9/16"	9/16"	-40-100 °C
111TP1394	1/4"	6,4 mm	800 mm	9/16"	9/16"	-40-100 °C
111TP1395	1/4"	6,4 mm	870 mm	9/16"	9/16"	-40-100 °C
111TP1396	1/4"	6,4 mm	920 mm	9/16"	9/16"	-40-100 °C
111TP1397	1/4"	6,4 mm	1250 mm	9/16"	9/16"	-40-100 °C
111TP1398	1/4"	6,4 mm	2000 mm	9/16"	9/16"	-40-100 °C
111TP1399	3/8"	9,5 mm	340 mm	9/16"	9/16"	-40-100 °C
111TP1400	3/8"	9,5 mm	370 mm	9/16"	9/16"	-40-100 °C
111TP1401	3/8"	9,5 mm	465 mm	9/16"	9/16"	-40-100 °C
111TP1402	3/8"	9,5 mm	490 mm	9/16"	9/16"	-40-100 °C
111TP1403	3/8"	9,5 mm	520 mm	9/16"	9/16"	-40-100 °C
111TP1404	3/8"	9,5 mm	615 mm	9/16"	9/16"	-40-100 °C
111TP1405	3/8"	9,5 mm	670 mm	9/16"	9/16"	-40-100 °C
111TP1406	3/8"	9,5 mm	5000 mm	9/16"	9/16"	-40-100 °C

HOSES
TUYAUX – SCHLÄUCHE



REF	Hose Ø	Hose Ø	Length	Fitting 1	Fitting 2	Info
<u>111TP1407</u>	1/4"	6,4 mm	2000 mm	9/16"	9/16"	-40-100 °C
<u>111TP1408</u>	3/8"	9,5 mm	2700 mm	9/16"	9/16"	-40-100 °C

SOLENOID VALVES

ÉLECTROVANNES – MAGNETVENTILE



REF	Volt	Ø	Info
<u>111TP1409</u>	12 V	15,8 – 17,4 mm	7/8" UNF
<u>111TP1410</u>	24 V	15,8 – 17,4 mm	7/8" UNF

CARTRIDGES

CARTOUCHES – PATRONEN



REF	Ø	Info
<u>111TP1411</u>	15,8 – 17,4 mm	7/8" UNF – 3/2



REF	Ø	Info
<u>111TP1412</u>	12,7 mm	3/4" UNF – SA



REF	Ø	Info
<u>111TP1413</u>	12,7 mm	3/4" UNF – SA



REF	Ø	Info
<u>111TP1414</u>	12,7 mm	3/4" UNF – SA

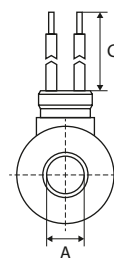
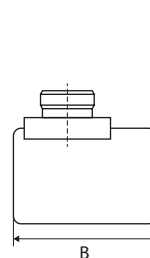
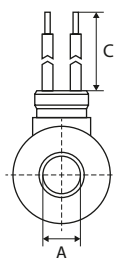
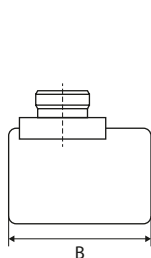


REF	Ø	Info
<u>111TP1415</u>	15,8 – 17,4 – 18,9 mm	7/8" UNF – 4/2



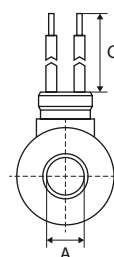
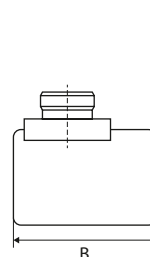
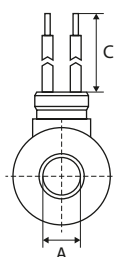
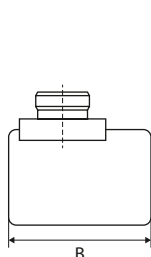
REF	Ø	Info
<u>111TP1416</u>	15,8 mm	SA

COILS BOBINES – SPULEN



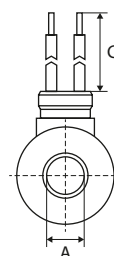
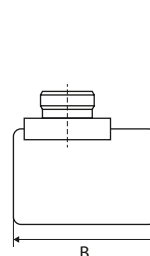
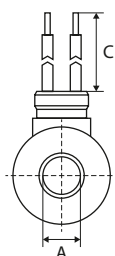
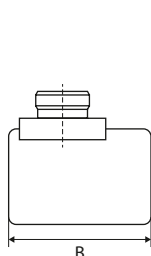
REF	Volt	A	B	Info
<u>111TP1417</u>	12 V – 18 W	13 mm	39 mm	
<u>111TP1418</u>	24 V – 18 W	13 mm	39 mm	

REF	Volt	A	B	Info
<u>111TP1419</u>	12 V	13 mm	39 mm	M27 x 1 mm
<u>111TP1420</u>	24 V	13 mm	39 mm	M27 x 1 mm



REF	Volt	A	B	Info
<u>111TP1421</u>	12 V	16 mm	50 mm	
<u>111TP1422</u>	24 V	16 mm	50 mm	

REF	Volt	A	B	Info
<u>111TP1423</u>	12 V	18 mm	40 mm	M27 x 1 mm
<u>111TP1424</u>	24 V	18 mm	40 mm	M27 x 1 mm



REF	Volt	A	B	Info
<u>111TP1425</u>	12 V	14 mm	40 mm	
<u>111TP1426</u>	24 V	14 mm	40 mm	

REF	Volt	A	B	Info
<u>111TP1427</u>	12 V – 26 W	13 mm	39 mm	
<u>111TP1428</u>	24 V – 26 W	13 mm	39 mm	

VALVE BLOCKS

BOÎTIERS À SOUPAPES – STEUERBLÖCKE



REF

Info

[111TP1429](#)

4/2 – max 280 bar

VALVES & SWITCHES

SOUPAPES & INTERRUPTEURS – VENTILE & SCHALTER



REF

Info

[111TP1430](#)

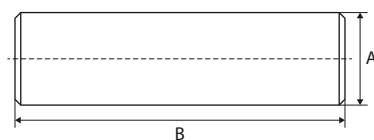
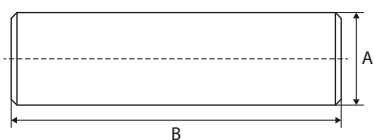
V250 – 6 A

USED FOR ANTEO

WWW.CROVORG.PL

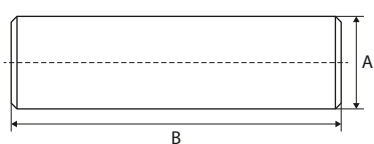
PINS

AXES – ACHSEN



REF	A	B	Info
111TP1431	30 mm	78 mm	
111TP1432	30 mm	89 mm	
111TP1433	30 mm	99 mm	
111TP1434	30 mm	129 mm	

REF	A	B	Info
111TP1435	35 mm	130 mm	

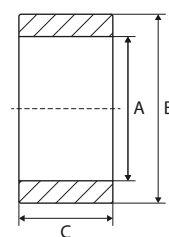


REF	A	B	Info
111TP1346	30 mm	370 mm	

PLATFORM ROLLERS

GALETS DE TRANSPALETTE – PLATTFORMROLLEN

REF	A	B	C
111TP1436	11 mm	61 mm	27 mm
111TP1437	12 mm	50 mm	28 mm
111TP1438	12 mm	70 mm	28 mm
111TP1439	12 mm	100 mm	27 mm
111TP1440	25 mm	70 mm	80 mm
111TP1441	26 mm	70 mm	35 mm
111TP1442	30 mm	80 mm	35 mm
111TP1444	30 mm	90 mm	35 mm
111TP1443	30 mm	130 mm	35 mm

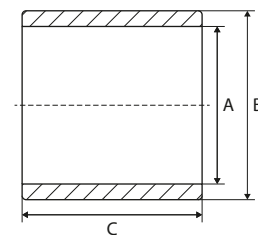


PINS, BUSHINGS & ROLLERSPINS, BUSHINGS & ROLLERS – AXES, BAGUES & GALETS – ACHSEN, BUCHSEN & ROLLEN

BUSHINGS

BAGUES – BUCHSEN

REF	A	B	C	Info
<u>111TP1445</u>	30 mm	34 mm	15 mm	DX
<u>111TP1446</u>	30 mm	34 mm	20 mm	DX
<u>111TP1447</u>	30 mm	34 mm	25 mm	DX
<u>111TP1448</u>	30 mm	34 mm	30 mm	DX
<u>111TP1449</u>	30 mm	34 mm	40 mm	DX
<u>111TP1450</u>	35 mm	39 mm	30 mm	DX



SCREWS, NUTS & RINGS

VIS, ÉCROUS & RONDELLES – SCHRAUBEN, MUTTERN & RINGE



REF	Info
<u>111TP1451</u>	56 x 56 x 6 mm



REF	Info
<u>111TP1345</u>	M8 x 12 mm
<u>111TP1264</u>	M8 x 16 mm
<u>111TP1265</u>	M10 x 18 mm



REF	Info
<u>111TP1266</u>	M12 x 50 mm
<u>111TP1267</u>	M16 x 30 mm
<u>111TP1268</u>	M16 x 40 mm
<u>111TP1269</u>	M16 x 80 mm



REF	Info
<u>111TP1270</u>	M8 x 75 mm
<u>111TP1271</u>	M10 x 75 mm
<u>111TP1344</u>	M14 x 150 mm
<u>111TP1272</u>	M14 x 180 mm
<u>111TP1273</u>	M14 x 230 mm
<u>111TP1274</u>	M16 x 75 mm
<u>111TP1275</u>	M16 x 150 mm
<u>111TP1276</u>	M16 x 155 mm



REF	Info
<u>111TP1277</u>	M6 x 80 mm
<u>111TP1278</u>	M8 x 30 mm
<u>111TP1279</u>	M8 x 60 mm
<u>111TP1280</u>	M16 x 45 mm
<u>111TP1281</u>	M20 x 50 mm

SCREWS, NUTS & RINGS

VIS, ÉCROUS & RONDELLES – SCHRAUBEN, MUTTERN & RINGE



REF	Info
<u>111TP1282</u>	M8 x 12 mm
<u>111TP1283</u>	M10 x 20 mm

REF	Info
<u>111TP1284</u>	M6 x 12 mm
<u>111TP1285</u>	M6 x 16 mm
<u>111TP1286</u>	M12 x 30 mm



REF	Info
<u>111TP1287</u>	M8 x 20 mm
<u>111TP1288</u>	M8 x 25 mm
<u>111TP1289</u>	M8 x 30 mm
<u>111TP1290</u>	M12 x 25 mm
<u>111TP1291</u>	M12 x 45 mm

REF	Info
<u>111TP1306</u>	M6 x 45 mm
<u>111TP1342</u>	M8 x 80 mm
<u>111TP1307</u>	M8 x 90 mm
<u>111TP1308</u>	M10 x 80 mm



REF	Info
<u>111TP1292</u>	M3
<u>111TP1293</u>	M5
<u>111TP1294</u>	M6
<u>111TP1295</u>	M8
<u>111TP1296</u>	M10
<u>111TP1297</u>	M12
<u>111TP1298</u>	M14
<u>111TP1299</u>	M16
<u>111TP1300</u>	M20

REF	Info
<u>111TP1309</u>	Ø 25 mm
<u>111TP1310</u>	Ø 28 mm
<u>111TP1311</u>	Ø 30 mm
<u>111TP1312</u>	Ø 35 mm
<u>111TP1314</u>	Ø 39 mm
<u>111TP1313</u>	Ø 40 mm

USED FOR ANTEO

WWW.CROVORG.PL

SCREWS, NUTS & RINGS

VIS, ÉCROUS & RONDELLES – SCHRAUBEN, MUTTERN & RINGE



REF	Info
<u>111TP1301</u>	Ø 6 mm
<u>111TP1302</u>	Ø 8 mm
<u>111TP1303</u>	Ø 24 mm

REF	Info
<u>111TP1315</u>	M6
<u>111TP1316</u>	M8
<u>111TP1343</u>	M16



REF	Info
<u>111TP1304</u>	Ø 6 x 16 mm
<u>111TP1305</u>	Ø 8 x 60 mm

ROLL STOPS & PARTS

BUTÉES DE ROUES & ACCESSOIRES – ABROLLSICHERUNGEN & ERSATZTEILE



REF	Info
111TP1452	Ø 12 x 270 mm – 2 pcs



REF	Info
111TP1453	

SPRINGS & GAS SPRINGS

RESSORTS & VÉRINS À GAZ – FEDERN & GASDRUCKFEDERN



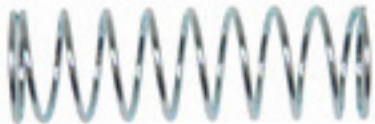
REF	Info
111TP1454	Ø 60 mm – Ø 12 mm – left



REF	Info
111TP1455	Ø 60 mm – Ø 12 mm – right



REF	Info
111TP1456	Ø 16 x 90 mm – Ø 1,5 mm



REF	Info
111TP1457	Ø 30 x 95 mm – Ø 2 mm



REF	Info
111TP1458	605 mm – 1100N



REF	Info
111TP1459	705 mm – 1300N

USED FOR ANTEO

WWW.CROVORG.PL

BUMPERS & BUFFERS

PARE-CHOC & BUTOIRS – STOSSDÄMPFER & -PUFFER



REF

Info

[111TP1460](#)

Ø 25 x 15 mm



REF

Info

[111TP1461](#)

Ø 50 x 20 mm

CAPS

BOUCHONS – DECKEL



REF

Info

[111TP1462](#)

100 x 50 mm



REF

Info

[111TP1463](#)

Ø 100 mm

PLATFORM LOCKS

VERROUILLAGE DE PLATEFORME – PLATTFORMVERSCHLÜSSE



REF

Info

[111TP1470](#)

F3



REF

Info

[111TP1471](#)

160 mm

CLAMPS

PINCES – KLAMMERN



REF

Info

[111TP1472](#)

Ø 18 mm

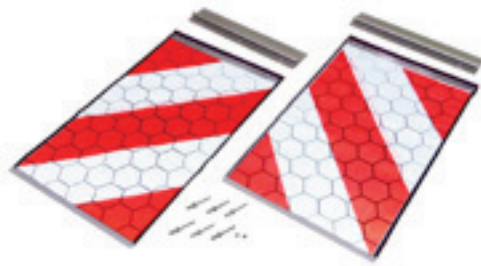
MECHANICAL PARTS – PIÈCES MÉCANIQUES – MECHANISCHE ERSTATZTEILE

PLATFORM PARTS

PIÈCES DE PLATEFORME – PLATTFORMERSATZTEILE



REF	Info
<u>111TP1469</u>	§ 53b Abs. 5 StVZO TÜV/CE with certificate – 250 x 400 mm



REF	Info
<u>111TP1320</u>	§ 53b Abs. 5 StVZO TÜV/CE without certificate – 250 x 400 mm



REF	Info
<u>111TP1464</u>	Left



REF	Info
<u>111TP1465</u>	Right



REF	Info
<u>111TP1466</u>	2650 mm



REF	Info
<u>111TP1467</u>	2700 mm



REF	Info
<u>111TP1468</u>	Sold per metre

CONTROLLERS
COMMANDES – BEDIENUNGEN



REF	Info
111TP1473	12–24 V



REF	Info
111TP1474	Used for REF 111TP1473

JOYSTICKS
LEVIERS DE COMMANDE – JOYSTICKS



REF	Info
111TP1475	2 x NO



REF	Info
111TP1476	2 x NO – 2 x NC

FOOT CONTROLLERS & PARTS
COMMANDES AU PIED & ACCESSOIRES – FUSSSCHALTER & ERSATZTEILE



REF	Info
111TP1483	Neutral



REF	Info
111TP1484	Up



REF	Info
111TP1485	Down

ROTARY/PUSH SWITCHES & PARTS

INTERRUPTEURS ROTATIFS/POUSOIRS & ACCESSOIRES – DREH-/DRUCKSCHALTER & ERSATZTEILE



REF	Info
<u>111TP1477</u>	2 x NO – red



REF	Info
<u>111TP1478</u>	2 x NO – black



REF	Info
<u>111TP1479</u>	2 pos. (O–II)



REF	Info
<u>111TP1480</u>	3 pos. (II–O–I)



REF	Info
<u>111TP1481</u>	3 pos. (I–O–I)



REF	Info
<u>111TP1482</u>	3 pos. (II–O–II)

CONTACT ELEMENTS

BLOCS DE CONTACT – KONTAKTELEMENTE



REF	Info
<u>111TP1486</u>	1 x NO



REF	Info
<u>111TP1487</u>	1 x NC

BATTERY/EMERGENCY SWITCHES & PARTS

COUPE BATTERIE/INTERRUPTEURS D'ARRÊT D'URGENCE & ACCESSOIRES – BATTERIE-/NOTSTOPPSCHALTER & ERSATZTEILE



REF	Info
111TP1488	100 A – M10

REF	Info
111TP1489	Used for REF 111TP1488

SENSORS & SWITCHES

CAPTEURS & INTERRUPTEURS – SENSOREN & SCHALTER



REF	Info
111TP1490	M18 x 1 mm – 2 m

REF	Info
111TP1491	2,5 m

KEYS

CLÉS – SCHLÜSSEL



REF	Info
111TP1492	5 sides

ATLAS CONTROLLERS

COMMANDES ATLAS – ATLAS BEDIENUNGEN



REF	Info
<u>111TP1493</u>	Extreme specific – 2 buttons 12–24 V – 5 A – IP67 – K09



REF	Info
<u>111TP1494</u>	Extreme specific – 2 buttons 12–24 V – 5 A – IP67 – IK09



REF	Info
<u>111TP1495</u>	Evolution – 2 buttons 12–24 V – 5 A – IP67 – IK09



REF	Info
<u>111TP1496</u>	Evolution – 3 buttons 12–24 V – 5 A – IP67 – IK09



REF	Info
<u>111TP1497</u>	Extreme universal – 2 buttons 12 V – 500 mA – IP67 – IK09 Programmable



REF	Info
<u>111TP1498</u>	Extreme universal – 3 buttons 12 V – 500 mA – IP67 – IK09 Programmable

See also chapter 15 – Accessories for more Atlas controllers.

KOSTAL CABLES
CÂBLES KOSTAL – KOSTALKABEL



REF	Info
111TP1499	4000 mm – M27 x 1 mm

CONNECTORS & PARTS
CONNECTEURS & ACCESSOIRES – STECKER & ERSATZTEILE



REF	Info
111TP1500	7 pole – DIN 72577–ISO 1724



REF	Info
111TP1501	7 pole – DIN 72577–ISO 1724



REF	Info
111TP1502	Hirschmann (GSA)

FLASHLIGHTS & PARTS

LAMPES TORCHES & ACCESSOIRES – BLINKLEUCHTEN & ERSATZTEILE



REF	Info
111TP1503	20° – IP68



REF	Info
111TP1504	Used for REF 111TP1503



REF	Info
111TP1505	12–24 V

RELAIS

RELAIS – RELAIS



REF	Info
111TP1506	12 V – 20–30 A – NO/NC



REF	Info
111TP1507	24 V – 10–20 A – NO/NC

FUSES

FUSIBLES – SICHERUNGEN



REF	Info
<u>111TP1508</u>	100 A – mega



REF	Info
<u>111TP1509</u>	175 A – mega



REF	Info
<u>111TP1510</u>	200 A – mega



REF	Info
<u>111TP1511</u>	250 A – mega

FUSE HOLDERS & PARTS

PORTE-FUSIBLES & ACCESSOIRES – SICHERUNGSHALTER & ERSATZTEILE



REF	Info
<u>111TP1512</u>	DIN 72581/med

THYRISTORS & DIODES

THYRISTORS & DIODES – THYRISTOREN & DIODEN



REF	Info
<u>111TP1513</u>	6 A

Notes section with horizontal dotted lines for writing.