

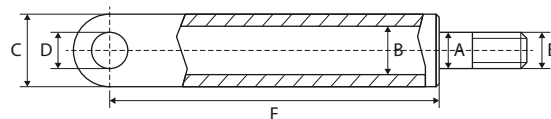


1

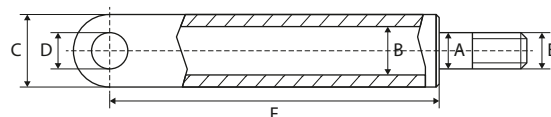
USED FOR AMA

LIFT CYLINDERS

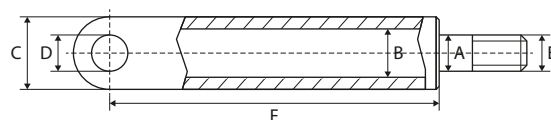
VÉRINS DE LEVAGE – HUBZYLINDER



REF	A	B	C	D	E	F	Info
<u>111TP1181</u>	40 mm	70 mm	85 mm	35 mm	M36 x 2 mm	450 mm	Old Type



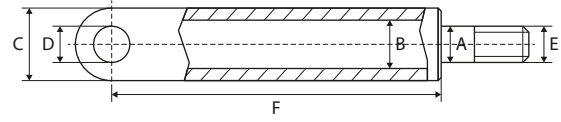
REF	A	B	C	D	E	F	Info
<u>111TP1182</u>	40 mm	70 mm	85 mm	35 mm	M36 x 2 mm	465 mm	Old Type



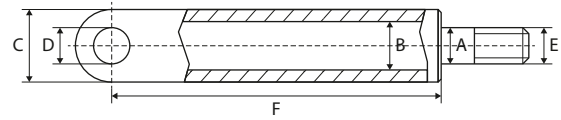
REF	A	B	C	D	E	F	Info
<u>111TP1183</u>	40 mm	80 mm	95 mm	35 mm	M36 x 2 mm	460 mm	New Type

TILT CYLINDERS

VÉRIN D'INCLINAISON – SCHLIESSZYLINDER



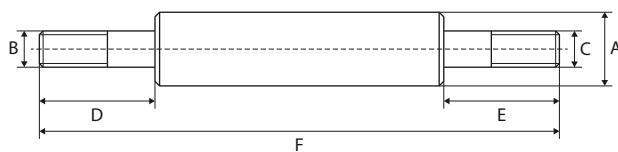
REF	A	B	C	D	E	F	Info
<u>111TP1184</u>	40 mm	70 mm	85 mm	35 mm	M36 x 2 mm	450 mm	Old Type



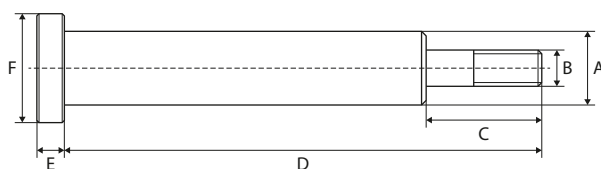
REF	A	B	C	D	E	F	Info
<u>111TP1185</u>	50 mm	80 mm	95 mm	35 mm	M45 x 2 mm	460 mm	New Type

PISTON RODS

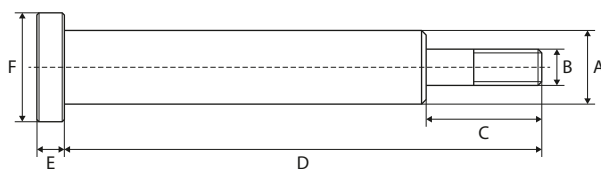
TIGES DE PISTON – KOLBENSTANGEN



REF	A	B	C	D	E	F	Info
<u>111TP1186</u>	40 mm	M34	M36	28 mm	88 mm	485 mm	New Type



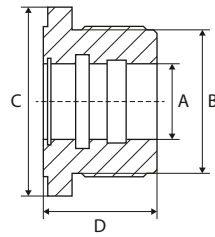
REF	A	B	C	D	E	Info
<u>111TP1187</u>	40 mm	M36		510 mm	35 mm	



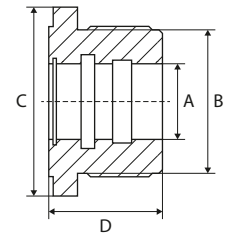
REF	A	B	C	D	E	Info
<u>111TP1188</u>	40 mm	M36		500 mm	45 mm	
<u>111TP1189</u>	50 mm	M45		500 mm	45 mm	

CYLINDER HEADS

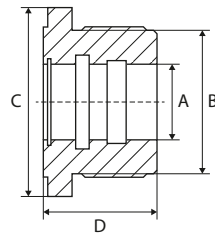
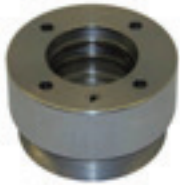
CULASSES – ZYLINDERKÖPFE



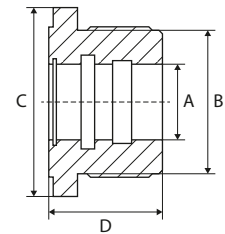
REF	A	B	C	D	Info
<u>111TP1190</u>	40 mm	70 mm	90 mm	50 mm	OldType



REF	A	B	C	D	Info
<u>111TP1191</u>	40 mm	80 mm	100 mm	50 mm	Old Type



REF	A	B	C	D	Info
<u>111TP1192</u>	48,5 mm	73 mm	85 mm	48,5 mm	



REF	A	B	C	D	Info
<u>111TP1193</u>	40 mm	82 mm	93 mm	48,8 mm	

SEAL KITS

KITS DE JOINTS – DICHTUNGSSÄTZE



REF	Info
<u>111TP1194</u>	Ø 30/50 mm



REF	Info
<u>111TP1195</u>	Ø 30/50 mm



REF	Info
<u>111TP1196</u>	Ø 40/70 mm



REF	Info
<u>111TP1197</u>	Ø 40/70 mm



REF	Info
<u>111TP1198</u>	Ø 40/80 mm



REF	Info
<u>111TP1199</u>	Ø 40/80 mm



REF	Info
<u>111TP1200</u>	Ø 50/80 mm



REF	Info
<u>111TP1201</u>	Ø 50/80 mm



REF	Info
<u>111TP1202</u>	Ø 55/110 mm



REF	Info
<u>111TP1203</u>	Ø 55/65 mm

SEAL KITS

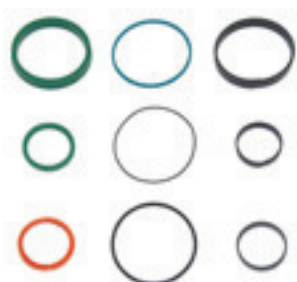
KITS DE JOINTS – DICHTUNGSSÄTZE



REF	Info
<u>111TP1204</u>	Ø 69,5/85 mm



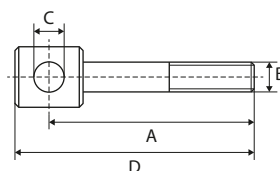
REF	Info
<u>111TP1205</u>	Ø 80/90 mm



REF	Info
<u>111TP1206</u>	

ROD ENDS

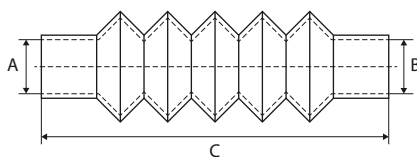
ROTULES – GELENKKÖPFE



REF	A	B	C	D	Info
<u>111TP1207</u>	70 mm	M36	35 mm	100 mm	
<u>111TP1208</u>	370 mm	M36	35 mm	400 mm	

DUST COVERS

CACHE-POUSSIÈRE – STAUBKAPPE



REF	Ø A/B	Min–C–Max	#1	#2
<u>111TP1209</u>	55/70 mm	115–270–500 mm	<u>111TP4999</u>	<u>111TP4999</u>

SUCTION TUBES

TUBES D'ASPIRATION – SAUGROHRE



REF

Info

[111TP1210](#)

HE6000

ELECTRIC MOTORS

MOTEURS ÉLECTRIQUES – ELEKTROMOTOREN



REF	Volt	kW	Rotation
<u>111TP1211</u>	12 V	0,8 kW	CW >>
<u>111TP1212</u>	24 V	0,8 kW	CW >>

REF	Volt	kW	Rotation
<u>111TP1213</u>	12 V	3 kW	CW >>



REF	Volt	kW	Rotation
<u>111TP1214</u>	12 V	2 kW	CW >>
<u>111TP1215</u>	24 V	2 kW	CW >>

REF	Volt	kW	Rotation
<u>111TP1216</u>	24 V	3 kW	CW >>

HYDRAULIC PUMPS

POMPES HYDRAULIQUES – HYDRAULIKPUMPEN



REF	CC	Rotation	Info
<u>111TP1217</u>	2,5 cc	<< CCW	MD-TYP
<u>111TP1218</u>	3,3 cc	<< CCW	MD-TYP

REF	CC	Rotation	Info
<u>111TP1219</u>	3,2 cc	<< CCW	HE6000-TYP



REF	CC	Rotation	Info
<u>111TP1220</u>	0,8 cc	<< CCW	

SOLENOID SWITCHES/CONTACTORS

SOLÉNOÏDES/CONTACTEURS – MAGNETSCHALTER/SCHÜTZE



REF	Volt	Amp
111TP1221	12 V	100 A



REF	Volt	Amp
111TP1222	24 V	100 A

BRUSHES

BALAIS – KOHLEBÜRSTEN



REF	Info
111TP1223	15,8 x 8,9 x 15,8 mm – 24 V



REF	Info
111TP1224	24,8 x 9,9 x 22,9 mm

BRUSH ROCKERS

COLLIERS PORTE-BALAIS – KOHLENHALTER



REF	Info
111TP1225	Ø 105 mm

BEARINGS

ROULEMENTS – LAGER



REF	Info
111TP1226	Ø 12/32 x 10 mm
111TP1227	Ø 17/35 x 10 mm

HOSES

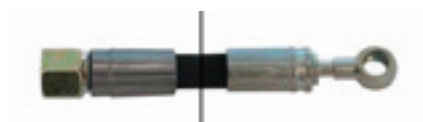
TUYAUX – SCHLÄUCHE



REF	Hose Ø	Hose Ø	Length	Fitting 1	Fitting 2	Info
<u>111TP1228</u>	3/8"	9,5 mm	450 mm	M18 x 1,5 mm	M18 x 1,5 mm	-40–100 °C
<u>111TP1229</u>	3/8"	9,5 mm	650 mm	M18 x 1,5 mm	M18 x 1,5 mm	-40–100 °C
<u>111TP1230</u>	3/8"	9,5 mm	800 mm	M18 x 1,5 mm	M18 x 1,5 mm	-40–100 °C
<u>111TP1231</u>	3/8"	9,5 mm	1000 mm	M18 x 1,5 mm	M18 x 1,5 mm	-40–100 °C
<u>111TP1232</u>	3/8"	9,5 mm	1200 mm	M18 x 1,5 mm	M18 x 1,5 mm	-40–100 °C



REF	Hose Ø	Hose Ø	Length	Fitting 1	Fitting 2	Info
<u>111TP1233</u>	1/4"	6,4 mm	500 mm	Ø 12 mm – 45°	Ø 12 mm – 45°	-40–100 °C



REF	Hose Ø	Hose Ø	Length	Fitting 1	Fitting 2	Info
<u>111TP1234</u>	1/4"	6,4 mm	925 mm	M18 x 1,5 mm	Ø 12 mm	-40–100 °C

SOLENOID VALVES

ÉLECTROVANNES – MAGNETVENTILE



REF	Volt	Ø	Info
<u>111TP1235</u>	12 V	15 mm	M20 x 1,5 mm – SA
<u>111TP1236</u>	24 V	15 mm	M20 x 1,5 mm – SA



REF	Volt	Ø	Info
<u>111TP1237</u>	12 V	15 mm	M20 x 1,5 mm – DA
<u>111TP1238</u>	24 V	15 mm	M20 x 1,5 mm – DA



REF	Volt	Ø	Info
<u>111TP1239</u>	24 V	15 mm	M20 x 1,5 mm – SA

VALVE BLOCKS

BOÎTIERS À SOUPAPES – STEUERBLÖCKE



REF	Info
<u>111TP1240</u>	203 x 70 x 49 mm – HE6000



REF	Info
<u>111TP1241</u>	208 x 70 x 49 mm – HE6000 – 15 l



REF	Info
<u>111TP1242</u>	79 x 70 x 50 mm – HS



REF	Info
<u>111TP1243</u>	76 x 64 x 30/35 mm – 3/2

REGULATING VALVES

SOUPAPES DE RÉGULATION – REGELVENTILE



REF	Info	REF	Info
<u>111TP1244</u>	15 l/min	<u>111TP1245</u>	20 l/min

VALVES & SWITCHES

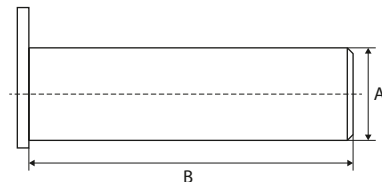
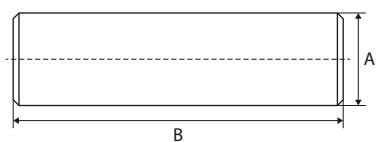
SOUPAPES & INTERRUPTEURS – VENTILE & SCHALTER



REF	Info
<u>111TP1246</u>	HE6000

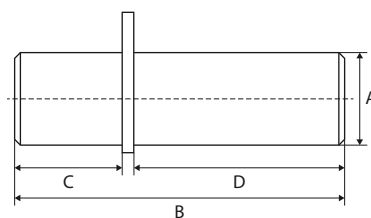
PINS

AXES – ACHSEN



REF	A	B	Info
<u>111TP1247</u>	20 mm	95 mm	

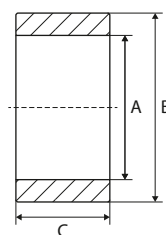
REF	A	B	Info
<u>111TP1253</u>	25 mm	116 mm	M8 x 1 mm
<u>111TP5001</u>	35 mm	95 mm	
<u>111TP5002</u>	35 mm	98 mm	M8 x 1 mm
<u>111TP1248</u>	35 mm	108 mm	M8 x 1 mm
<u>111TP1249</u>	35 mm	118 mm	M8 x 1 mm
<u>111TP1250</u>	35 mm	128 mm	M8 x 1 mm
<u>111TP5000</u>	35 mm	155 mm	M10 x 1,5 mm
<u>111TP1252</u>	35 mm	255 mm	M10 x 1,5 mm



REF	A	B	C	D	Info
<u>111TP1251</u>	35 mm	185 mm	68 mm	112 mm	M10 x 1 mm

PLATFORM ROLLERS

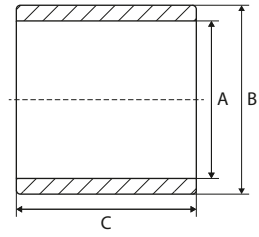
GALETS DE TRANSPALETTE – PLATTFORMROLLEN



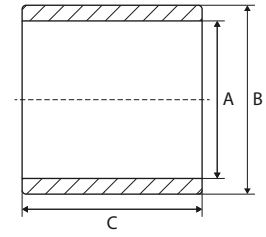
REF	A	B	C
<u>111TP1254</u>	35 mm	90 mm	40 mm

BUSHINGS

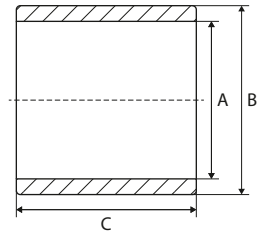
BAGUES – BUCHSEN



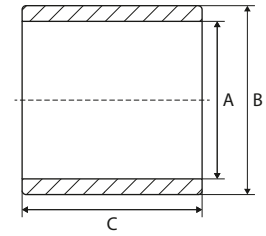
REF	A	B	C	Info
<u>111TP1255</u>	30 mm	36 mm	30 mm	
<u>111TP1256</u>	35 mm	42 mm	35 mm	
<u>111TP1257</u>	35 mm	42 mm	58 mm	



REF	A	B	C	Info
<u>111TP1258</u>	40 mm	50 mm	70 mm	



REF	A	B	C	Info
<u>111TP1259</u>	30 mm	36 mm	60 mm	



REF	A	B	C	Info
<u>111TP1260</u>	12 mm	14 mm	15 mm	DC

SCREWS, NUTS & RINGS

VIS, ÉCROUS & RONDELLES – SCHRAUBEN, MUTTERN & RINGE



REF	Info
<u>111TP1261</u>	M16 x 330 mm



REF	Info
<u>111TP1262</u>	M16



REF	Info
<u>111TP1345</u>	M8 x 12 mm
<u>111TP1264</u>	M8 x 16 mm
<u>111TP1265</u>	M10 x 18 mm



REF	Info
<u>111TP1266</u>	M12 x 50 mm
<u>111TP1267</u>	M16 x 30 mm
<u>111TP1268</u>	M16 x 40 mm
<u>111TP1269</u>	M16 x 80 mm



REF	Info
<u>111TP1270</u>	M8 x 75 mm
<u>111TP1271</u>	M10 x 75 mm
<u>111TP1344</u>	M14 x 150 mm
<u>111TP1272</u>	M14 x 180 mm
<u>111TP1273</u>	M14 x 230 mm
<u>111TP1274</u>	M16 x 75 mm
<u>111TP1275</u>	M16 x 150 mm
<u>111TP1276</u>	M16 x 155 mm



REF	Info
<u>111TP1277</u>	M6 x 80 mm
<u>111TP1278</u>	M8 x 30 mm
<u>111TP1279</u>	M8 x 60 mm
<u>111TP1280</u>	M16 x 45 mm
<u>111TP1281</u>	M20 x 50 mm

SCREWS, NUTS & RINGS

VIS, ÉCROUS & RONDELLES – SCHRAUBEN, MUTTERN & RINGE



REF	Info
<u>111TP1282</u>	M8 x 12 mm
<u>111TP1283</u>	M10 x 20 mm

REF	Info
<u>111TP1284</u>	M6 x 12 mm
<u>111TP1285</u>	M6 x 16 mm
<u>111TP1286</u>	M12 x 30 mm



REF	Info
<u>111TP1287</u>	M8 x 20 mm
<u>111TP1288</u>	M8 x 25 mm
<u>111TP1289</u>	M8 x 30 mm
<u>111TP1290</u>	M12 x 25 mm
<u>111TP1291</u>	M12 x 45 mm

REF	Info
<u>111TP1306</u>	M6 x 45 mm
<u>111TP1342</u>	M8 x 80 mm
<u>111TP1307</u>	M8 x 90 mm
<u>111TP1308</u>	M10 x 80 mm



REF	Info
<u>111TP1292</u>	M3
<u>111TP1293</u>	M5
<u>111TP1294</u>	M6
<u>111TP1295</u>	M8
<u>111TP1296</u>	M10
<u>111TP1297</u>	M12
<u>111TP1298</u>	M14
<u>111TP1299</u>	M16
<u>111TP1300</u>	M20

REF	Info
<u>111TP1309</u>	Ø 25 mm
<u>111TP1310</u>	Ø 28 mm
<u>111TP1311</u>	Ø 30 mm
<u>111TP1312</u>	Ø 35 mm
<u>111TP1314</u>	Ø 39 mm
<u>111TP1313</u>	Ø 40 mm

SCREWS, NUTS & RINGS

VIS, ÉCROUS & RONDELLES – SCHRAUBEN, MUTTERN & RINGE



REF	Info
<u>111TP1301</u>	Ø 6 mm
<u>111TP1302</u>	Ø 8 mm
<u>111TP1303</u>	Ø 24 mm

REF	Info
<u>111TP1315</u>	M6
<u>111TP1316</u>	M8
<u>111TP1343</u>	M16



REF	Info
<u>111TP1304</u>	Ø 6 x 16 mm
<u>111TP1305</u>	Ø 8 x 60 mm

SPRINGS & GAS SPRINGS

RESSORTS & VÉRINS À GAZ – FEDERN & GASDRUCKFEDERN



REF	Info
<u>111TP1317</u>	38 x 245 mm – Ø 8 mm

REF	Info
<u>111TP1341</u>	85 x 85 mm – Ø 4 mm



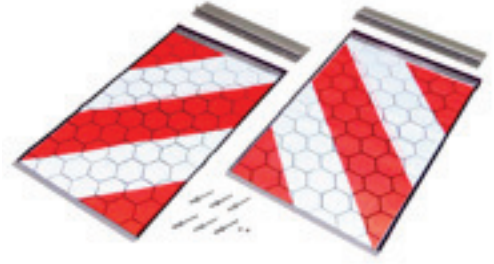
REF	Info
<u>111TP1318</u>	1225 mm – Ø 10 mm

PLATFORM PARTS

PIÈCES DE PLATEFORME – PLATTFORMERSATZTEILE



REF	Info
<u>111TP1319</u>	§ 53b Abs. 5 StVZO TÜV/CE with certificate – 250 x 400 mm



REF	Info
<u>111TP1320</u>	§ 53b Abs. 5 StVZO TÜV/CE without certificate – 250 x 400 mm



REF	Info
<u>111TP2930</u>	200 x 300 mm



REF	Info
<u>111TP1321</u>	240 x 370 mm



REF	Info
<u>111TP1322</u>	Ø 12 x 45 mm

JOYSTICKS

LEVIER DE COMMANDE – JOYSTICKS



REF	Info
111TP1323	4 position – 4 x 2NO

ROTARY/PUSH SWITCHES & PARTS

INTERRUPTEURS ROTATIFS/POUSOIRS & ACCESSOIRES – DREH-/DRUCKSCHALTER & ERSATZTEILE



REF	Info
111TP1324	TM



REF	Info
111TP1325	Down



REF	Info
111TP1326	Up



REF	Info
111TP1327	1999-2002



REF	Info
111TP1328	3 positions

FOOT CONTROLLERS & PARTS

COMMANDES AU PIED & ACCESSOIRES – FUSSSCHALTER & ERSATZTEILE



REF	Info
<u>111TP1329</u>	2000 mm

CONTACT ELEMENTS

BLOCS DE CONTACT – KONTAKTELEMENTE



REF	Info
<u>111TP1330</u>	1 x NO



REF	Info
<u>111TP1331</u>	1 x NC

BATTERY/EMERGENCY SWITCHES & PARTS

COUPE BATTERIE/INTERRUPTEURS D'ARRÊT D'URGENCE & ACCESSOIRES – BATTERIE-/NOTSTOPPSCHALTER & ERSATZTEILE



REF	Info
<u>111TP1332</u>	150–1000 A – 5 sec



REF	Info
<u>111TP1340</u>	Ø 40 mm – 40 x 35 x 30 mm

ATLAS CONTROLLERS

COMMANDES ATLAS – ATLAS BEDIENUNGEN



REF	Info
<u>111TP1334</u>	Extreme specific – 2 buttons 12–24 V – 5 A – IP67 – IK09



REF	Info
<u>111TP1339</u>	Extreme specific – 3 buttons 12–24 V – 5 A – IP67 – IK09



REF	Info
<u>111TP1335</u>	Evolution – 2 buttons 12–24 V – 5 A – IP67 – IK09

See also chapter 15 – Accessories for more Atlas controllers.

KOSTAL CABLES

CÂBLES KOSTAL – KOSTALKABEL



REF

Info

[111TP1336](#)

4000 mm – M27 x 1 mm

RELAIS

RELAIS – RELAIS



REF

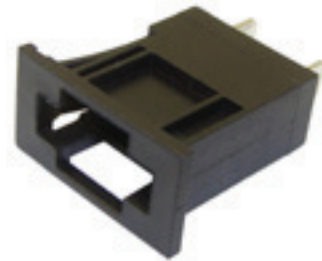
Info

[111TP1337](#)

10 – 110 W – 24 V

FUSE HOLDERS & PARTS

PORTE-FUSIBLES & ACCESSOIRES – SICHERUNGSHALTER & ERSATZTEILE



REF

Info

[111TP1338](#)

DIN 72581/med